

INSTALLATION INSTRUCTIONS

CUSTOMER SERVICE

Phone: 877-878-9336 • 8:00 am - 5:00 pm Mon - Fri CT

Email: customersupport@truxedo.com

PARTS INCLUDED IN YOUR KIT:

- A** Driver side cover rail
- B** Passenger side cover rail
- C** Roll cover
- D** Bulkhead seal

PARTS INCLUDED IN HARDWARE BAG:

- E** 6x Anchor block
- F** 6x Screw 5/16-18 x 7/8"
- G** 6x Washer, 5/16"
- H** 6x Rail attachment bracket
- I** 12x Set screw 1/4"
- J** 2x Corner support block weather seal

TOOLS REQUIRED

- Flat head screwdriver
- 1/2 Socket or wrench
- 3/8 Ratchet drive

TOOLS PROVIDED

- 1/8 Allen hex head wrench

TOOLS RECOMMENDED

- Isopropyl alcohol
- Scissors/utility knife

1 The serial number for the cover is located here.

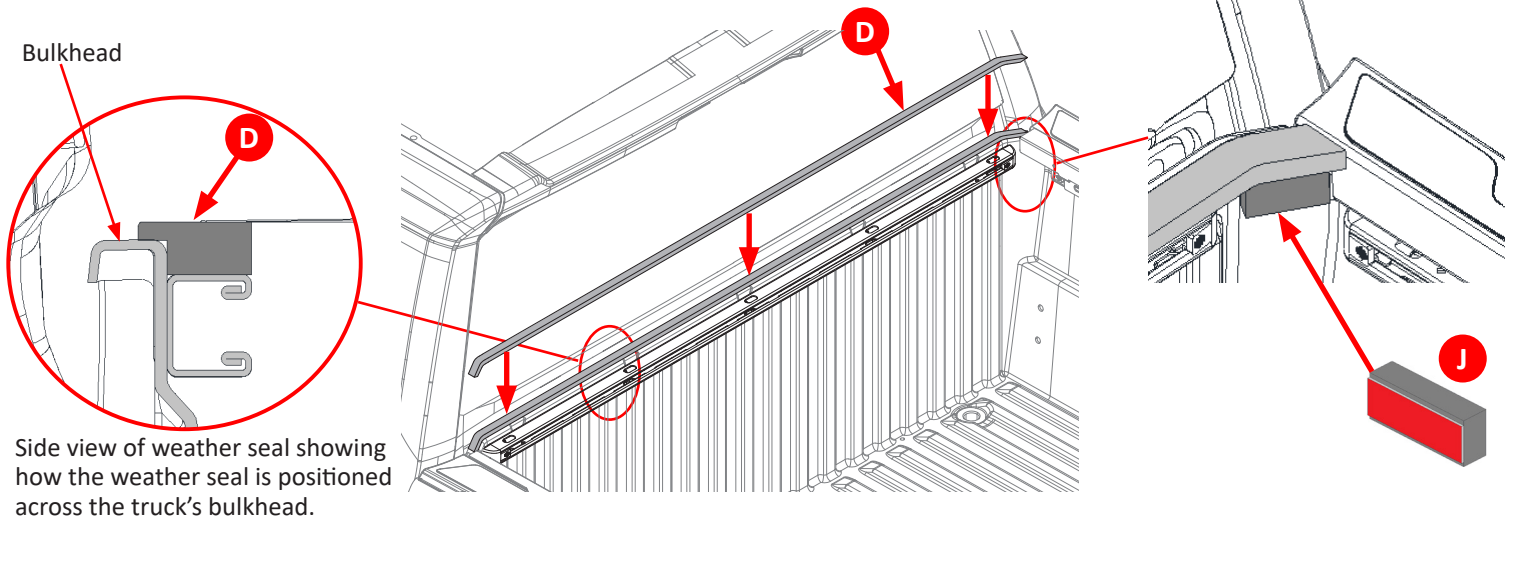
For future reference, write it here:

2 It is important that all areas where the bed cover mounts are clean and free of debris prior to installing.

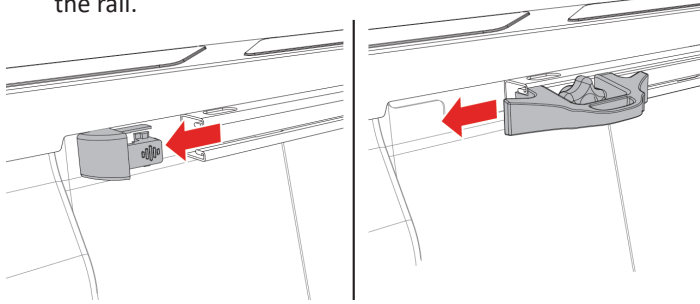
3 Install the bulkhead weather seal (D) to the truck's front bulkhead: Clean the area where the seal will go with soap and water to remove dirt and debris. Then clean the area with isopropyl alcohol to remove wax or grease and to evaporate any remaining water, allow the surface to dry. Then position the seal and apply pressure to the entire seal to make sure the adhesion is good.

Install corner support block seals (J): Peel off the protective layer to expose the adhesive surface of the weather seal. Apply the corner support block seals to the front corners of the truck bed. Position them carefully into the front corners of the truck bed, right under the bulkhead seal. Ensure that they are aligned properly and positioned where the bulkhead seal lacks support from the cargo rail. Do this at both front corners of the truck box.

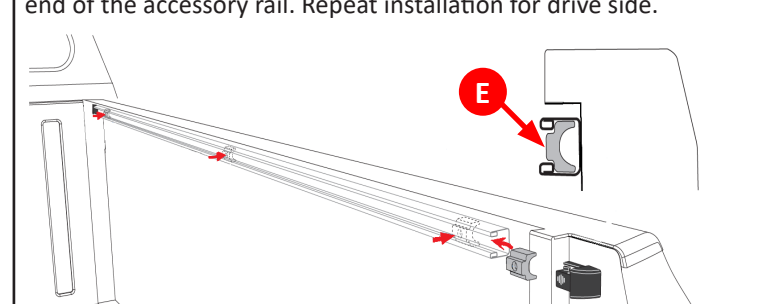
Bulkhead



4 Remove cargo rail end plugs: Begin by pushing in on the end plug tab and at the same time push the end plug out of the rail.



5 Install 3 anchor blocks (E) into the accessory rail from the tailgate end. Then put the end cap back into the tailgate end of the accessory rail. Repeat installation for drive side.



6 Install set screws (I) to rail brackets (H): Ensure you have the set screws (I), rail brackets (H), and Allen hex wrench required for installation.

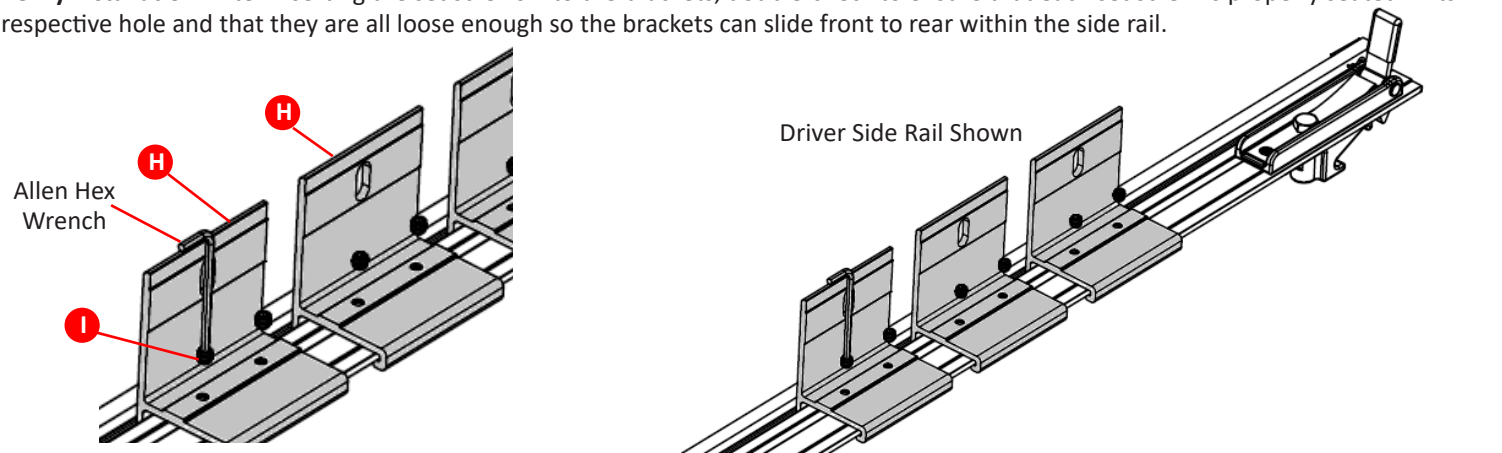
Identify components: Confirm that you have the correct set screws and rail brackets. Each rail bracket should have two holes for inserting the set screws.

Insert set screws: Take the set screws (I) and insert them into both holes of each bracket (H) as shown in the provided image below. Be sure to place one set screw in each hole of the bracket. Use Allen hex wrench tool to assist with inserting screws.

Leave set screws loose: As instructed, leave the set screws loose at this time. Do not tighten them fully yet, as you may need to make adjustments later in the installation process.

Repeat for each bracket: Repeat the process of inserting set screws into both holes of each bracket until all brackets are equipped with set screws.

Verify installation: After inserting the set screws into the brackets, double-check to ensure that each set screw is properly seated in its respective hole and that they are all loose enough so the brackets can slide front to rear within the side rail.



7 Place assembled rails on bed caps: Start by placing the assembled rails on top of the bed caps of the truck, ensuring that the fin seal is positioned on top. The fin seal helps to provide a secure fit and prevent water or debris from entering the truck bed.

Position brackets fore and aft: Inside each rail, position the brackets so there is one bracket at the front, one in the middle, and one at the rear of the cargo rail. Ensure that the brackets are aligned evenly along the length of the rail for optimal support.

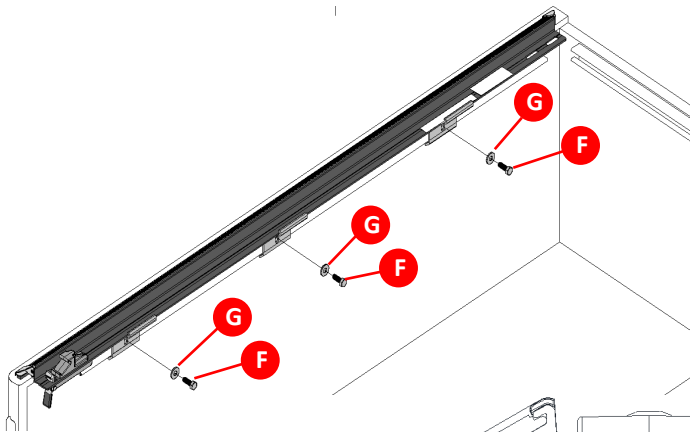
Align anchor blocks: Check the positioning of the anchor blocks (E) that were previously installed in the cargo rail. Align these anchor blocks with the rail brackets that you have just positioned. Proper alignment ensures that the rail system attaches securely.

Fasten rail brackets to anchor blocks: Use fastener (F) and washers (G) to fasten the rail brackets (H) securely to the anchor blocks (E). Insert the fasteners through the brackets and into the anchor blocks, ensuring a tight fit with the washers. This step ensures that the brackets are firmly attached to the truck's cargo rail.

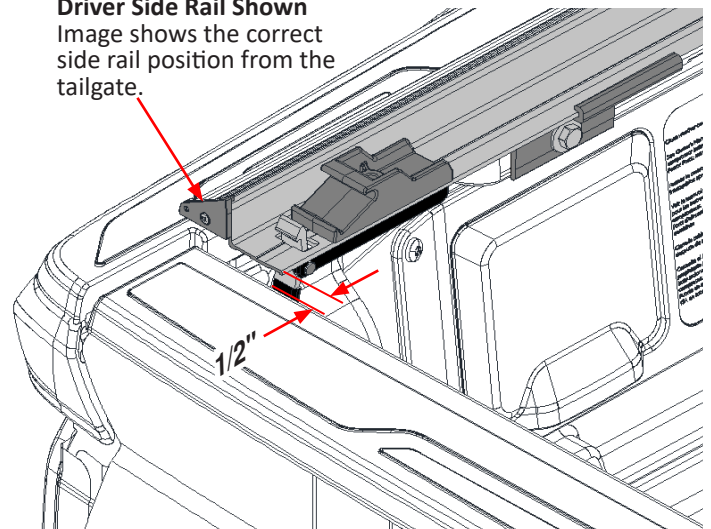
Position assembled side rails from the closed tailgate: With the truck's tailgate closed, position the end of each rail approximately 1/2" away from the rear corner of the truck bed. This positioning helps ensure proper alignment of the rail system and allows for clearance when opening and closing the tailgate.

repeat for passenger rail: Repeat the entire process to install the passenger rail on the opposite side of the truck bed. Follow the same steps to position brackets, align anchor blocks, fasten rail brackets, and position the end of the rail.

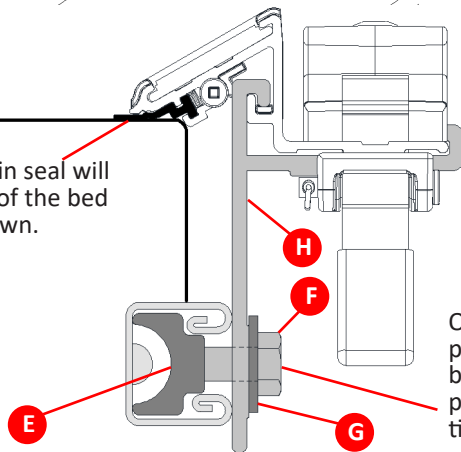
Double-check alignment and tightness: Once both rails are installed, double-check the alignment of the brackets, anchor blocks, and end positioning of the rails. Ensure that all fasteners are tightened securely and that the rails are properly aligned. This step helps to ensure the stability and functionality of the installed rail system.



Driver Side Rail Shown
Image shows the correct side rail position from the tailgate.

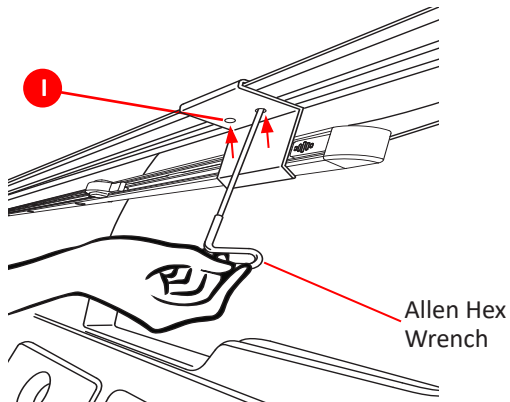


The rail's fin seal will sit on top of the bed cap as shown.

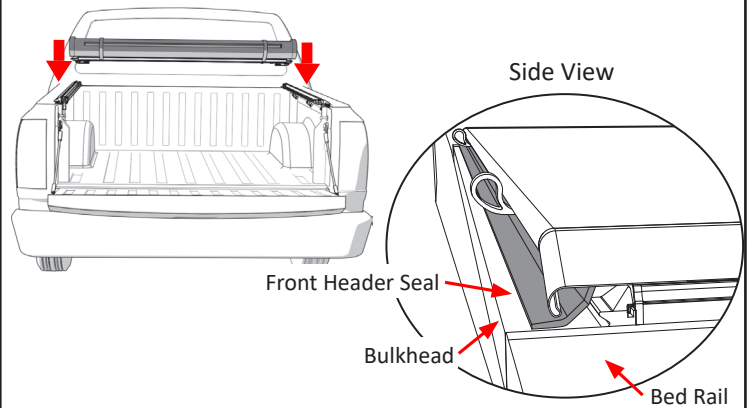


Once the rail is positioned from front to back apply downward pressure on the rail and tighten fasteners (F).

8 The sets screws (I) can now be tightened into to the bottom side of the rail as shown below. Use the Allen hex wrench that has been supplied in the hardware bag to complete this step. Do this for each bracket.

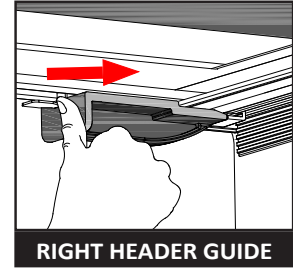
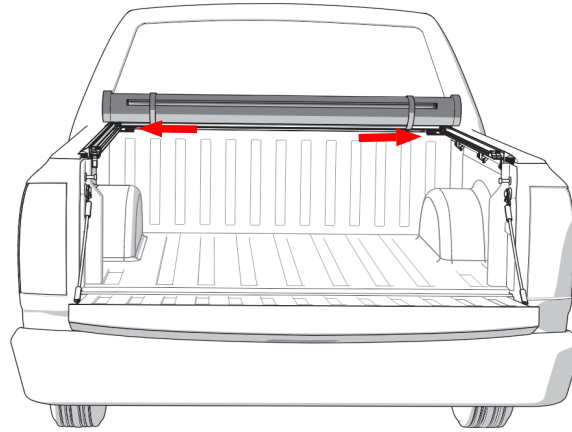
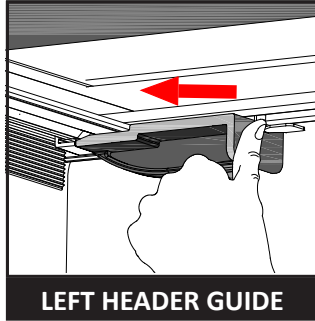


9 Place the cover (C) on the side rails towards the front of the truck bed (near the cab). The front header seal is designed to help shed water and should be sitting on top of the bulkhead.



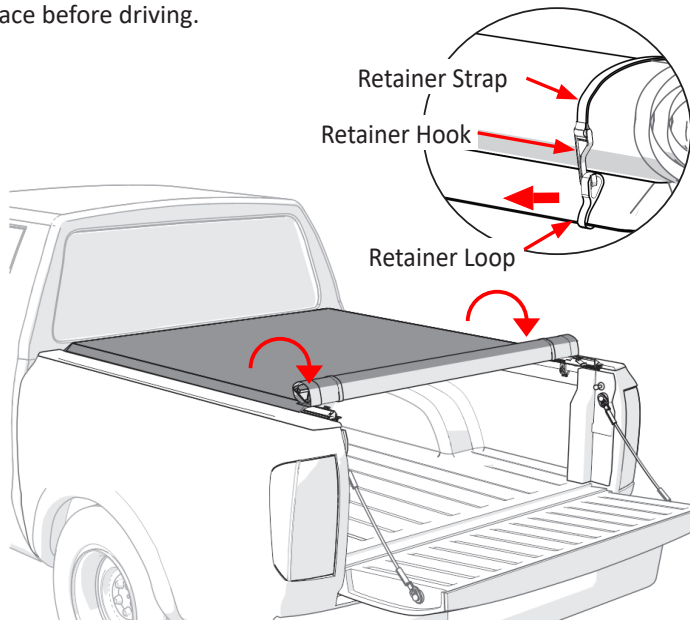
10 To connect the cover assembly (C) to the side rails (A & B) follow these steps: Slide the right and left header guides into the locked position: Ensure that the header guides are aligned properly with the side rails.

Listen for a clicking sound: As you slide the header guides into place, you should hear a clicking sound. This clicking sound indicates that the header guides have securely attached to the side rails.



11 Disengage the retainer hooks from the retainer loops: Locate the retainer hooks that secure the cover in place when closed. Disengage these hooks from the retainer loops by releasing them.

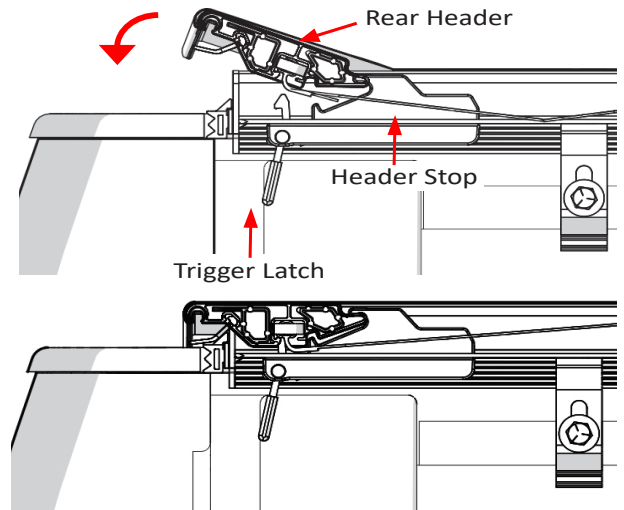
Unroll the cover towards the tailgate: Once the retainer hooks are disengaged, carefully unroll the cover towards the tailgate of the vehicle. Ensure that the cover is properly aligned and secured in place before driving.



12 To latch and secure the cover properly, follow these steps:

Place the rear header into the header stops: Locate the header stops on both side rails. These stops are designed to hold the rear header in place. Ensure that the rear header is positioned correctly within these stops.

Rotate the rear header downwards: Once the rear header is positioned correctly within the header stops, rotate it downwards. As you rotate it, you should feel the cover latch into place. This indicates that the cover is securely fastened and ready for use.



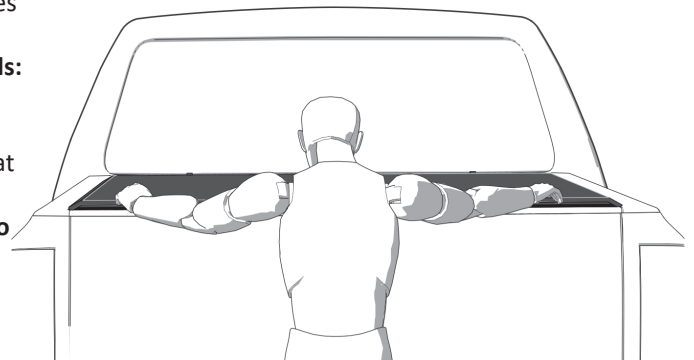
NOTE: We recommend closing the tailgate first and then closing the cover.

13 To ensure proper installation and safety before driving, follow these steps:

Listen for a clicking sound: After securing the cover and placing the rear header into the header stops, listen for a clicking sound. This sound indicates that the cover is correctly installed and securely fastened.

Secure the hook and loop fastener along the entire length of both side rails: After confirming the cover is properly installed, proceed to secure the hook and loop fastener along the entire length of both side rails. Simply run your hands down both sides of the cover to achieve this. This helps to ensure that the cover remains firmly in place while driving, preventing it from coming loose or flapping in the wind and causing possible damage. **You are ready to drive with the cover in the closed position.**

NOTE: If the tailgate has a key lock, the cover is secured until the tailgate is unlocked and opened.



COVER IN THE OPEN POSITION

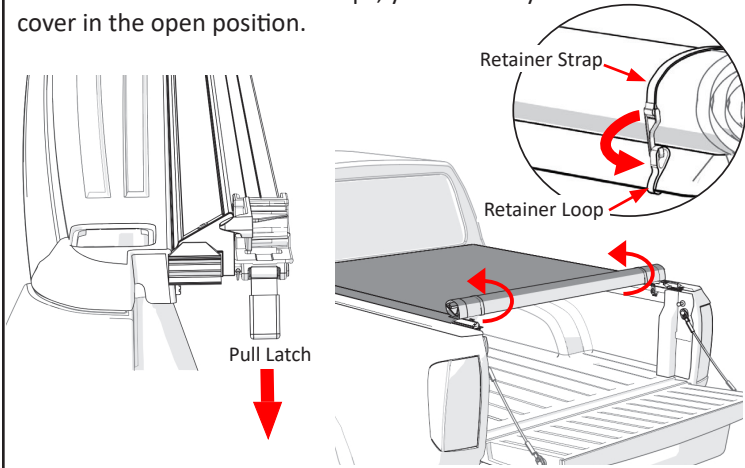
To drive with the cover in the open position, follow these steps:

Release the cover latch: Located on the driver side rail, there is a latch. Pull this latch towards you to release the cover.

Roll the cover toward the cab of the truck: Once the latch is released, start rolling the cover toward the cab of the truck. Ensure that both sides roll evenly to prevent any misalignment or damage to the cover.

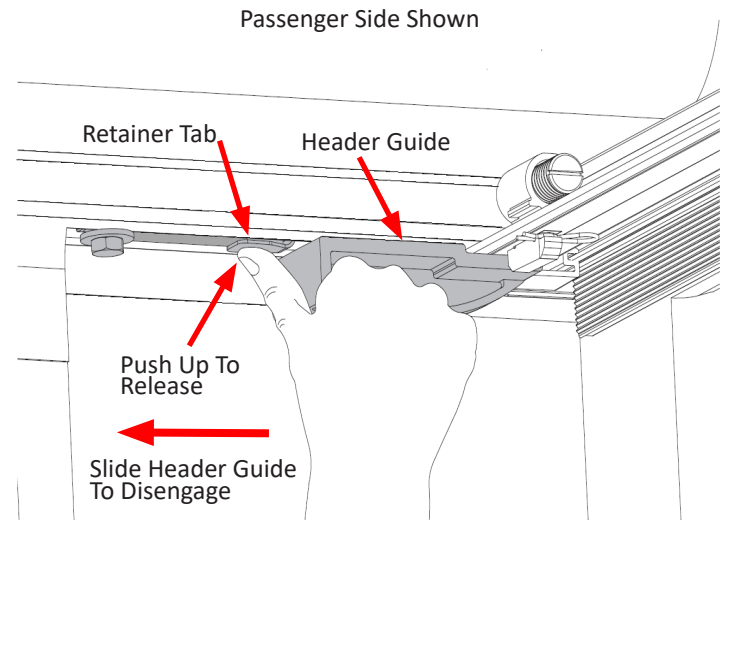
Secure the cover: After rolling the cover towards the cab, secure it by placing both retainer hooks into the retainer loops. This ensures that the cover remains stable and in place while driving with the cover open.

Ready to drive: Once the cover is securely fastened with the retainer hooks in the retainer loops, you are ready to drive with the cover in the open position.



REMOVING COVER

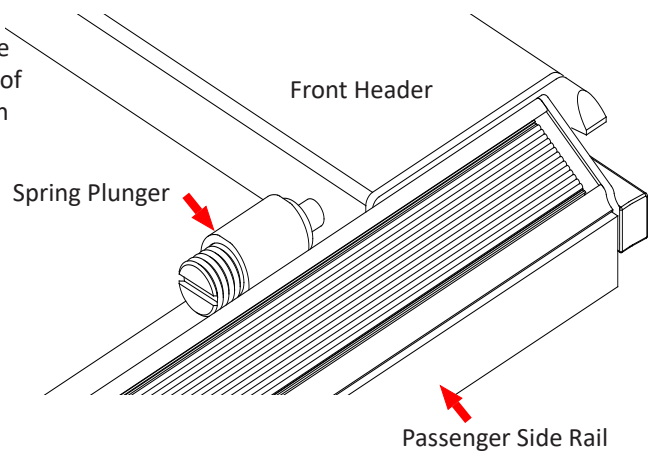
To remove the cover from the side rails, push up on the retainer tab and then slide the header guide away from the side rail. Do this on both the driver and passenger side. Carefully lift the cover assembly off the side rails.



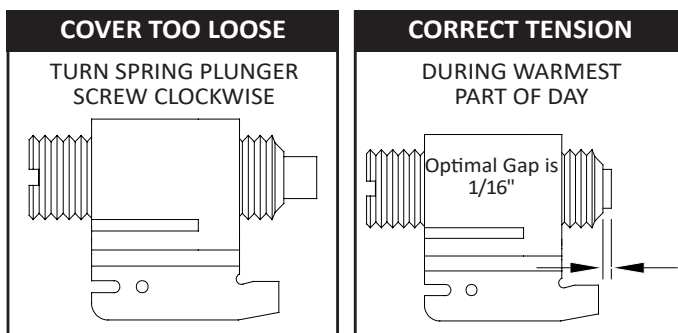
AUTOMATIC TENSION CONTROL ADJUSTMENT

Lo Pro is equipped with Automatic Tension Control. This helps compensate for material expansion and contraction caused by extreme temperature changes. Proper tension allows the cover to look and perform at its best. While preset at the factory, you can check cover tension after installation as well as seasonally.

If the cover feels too tight or too loose when opening or closing it, adjust the tension during the warmest part of the day. With the cover closed, release the hook and loop fastener from both side rails near the cab. Check compression of both spring plungers against the front header per Detail C. Roll the cover open and make adjustments. Repeat until satisfactory tension has been achieved.



DETAIL C



NOTE: Adjust tension in small increments. Slight adjustments will gain significant results.

LIMITED LIFETIME WARRANTY

WARRANTY COVERAGE

This truck bed cover is warranted against defects in materials or workmanship as follows. This warranty is void if the product has been damaged in an accident, or due to neglect, unforeseeable use, improper installation, improper servicing, or other cause not arising out of defects in material or workmanship.

LIMITED LIFETIME WARRANTY ON HARD PARTS

All hardware included with your truck bed cover, including rails, clamps and bows carry a limited lifetime warranty, subject to the terms below.

LIMITED LIFETIME WARRANTY FOR FABRIC

The fabric on your truck bed cover carries a limited lifetime warranty, subject to the terms below.

WARRANTY IS NOT TRANSFERABLE

The warranty is to the initial consumer purchasing the truck bed cover and it is not transferrable to a subsequent end user. Proof of purchase may be required to enforce these warranty rights.

WARRANTY CONDITIONS

Failure to follow these warnings and care instructions will void the warranty:

- Clean with mild automotive soap and water only.
- Do not use conditioners that contain silicone or petroleum. The cover can be treated with any vinyl protectant specifically made for tonneau covers.
- The tonneau cover must be secured at all points when the vehicle is in motion. When not fully closed with the rear latch engaged the cover must be completely rolled up and secured at the cab with both provided retainer straps attached. Do NOT drive with the bed cover in a partially open position.
- Cargo should not contact the tarp at any point. Protrusions in the tarp will stress the fabric. Cargo may also shift while traveling causing it to press against the fabric and damage it.
- Do NOT tie cargo to truck bed cover framework.
- Check rail clamps for tightness after a week of driving following the installation of the cover and periodically thereafter.
- Do NOT roll the cover into the rear cab window. Do NOT stow the cover against the cab of the truck.
- If the cover is going to be rolled open for an extended amount of time, periodically re-roll the cover and secure the retainer straps to ensure the cover doesn't rest against the cab of the truck.
- Before opening, the cover must be free of all foreign materials including snow and ice.
- Do NOT tow your vehicle from the rear with the cover on your vehicle. If towing from the rear is required, the cover MUST be removed from the vehicle and properly stored.

WARRANTY PERFORMANCE

If all warranty conditions are met, a defective truck bed cover, tarp, or hardware component will either be repaired or replaced (at our option). We reserve the right, for any warranty, to substitute a newer model of bed cover having similar form and function, to offer a warranty discount on an entire replacement system, and/or provide remedies other than those mentioned in this document.

WARRANTY PROCESS

A Return Material Authorization number must be obtained from our Customer Service Department prior to returning any product. We may require the original item to be returned postage prepaid for final determination. Shipping charges will apply for any repair or replacement. Other than postage or shipping charges, no charge will be made for repair or replacement under this warranty. This warranty gives you specific legal rights. As a consumer, you may also have additional rights and remedies under the laws of your state.

WARRANTY REGISTRATION

Warranty registration must be on file and/or proof of original purchase (detailed and dated receipt) required for warranty to be effective.

Please register online at <https://realtruck.com/truxedo-warranty>

REGISTER
YOUR
WARRANTY
ONLINE



SAFETY INSTRUCTIONS

- DO NOT place objects on or against cover or framework.
- DO NOT tie cargo to truck bed cover framework.
- DO NOT attempt to drive with the cover in the partially open position.
- DO NOT operate vehicle with objects on top of the cover.
- NEVER allow children or pets to occupy pickup box while cover is closed.
- Cover is not airtight. Special care is required to keep cargo clean and dry.
- Tonneau covers won't prevent theft of contents inside truck box.
- If the cover is going to be rolled open for an extended amount of time, periodically re-roll the cover and secure the retainer straps to ensure the cover doesn't rest against the cab of the truck.
- A fully rolled cover in the open position must always be secured with retainer straps.

TROUBLESHOOTING TIPS

WRINKLES ON THE FABRIC AFTER ROLLING COVER CLOSED

- Pull the fabric taut from each side. For best results, the help of a second person pulling on the opposite side is preferable.

SAGGING FABRIC BETWEEN THE CROSS BOWS

- Adjustment to automatic tension control may be required.

WIND LIFTS UP THE EDGE OF THE FABRIC

- Make sure to engage the hook and loop on the driver and passenger side rails after closing the cover. This may need to be done periodically when taking long trips.

FABRIC FLUTTERS EXCESSIVELY WHEN DRIVING

- Check cover tension, refer to the Automatic Tension Control section.
- Make sure hook and loop fasteners are set. See Step 13.

SNOW AND ICE ACCUMULATION ON THE FABRIC

- Use broom or brush to remove loose snow and ice. DO NOT use sharp or pointed tools to remove snow and ice.
- Direct sunlight will help melt snow and ice off the fabric.

TONNEAU COVER WILL NOT LATCH

- Check side rails to make sure they are level. See Step 7.
- Make sure the header seal is not caught between side rails & header.
- Check the position of side rails on the pickup box. They may be positioned too low. See Step 7.
- Make sure the cover has proper tension, refer to the Automatic Tension Control section.

FABRIC IS TOO TIGHT OR TOO LOOSE

- See Automatic Tension Control section to adjust tension.

FABRIC HAS SHIFTED TOO FAR TO ONE SIDE

- Unlatch the cover at the tailgate, release the hook and loop along both sides, go to the shorter side of the tarp and tug.

COVER CARE AND MAINTENANCE

- Clean with soap and water. The cover can be treated with any vinyl protectant specifically made for tonneau covers.
- It is recommended that you periodically check that the cover is securely attached to your truck bed. Inspect the clamps and front header guide slides to ensure they were properly installed and have not come loose during operation.
- It is recommended that you periodically inspect and service the rear latch closure. Clean away any excess dirt or grime.
- Covers that are used frequently or are subject to vibrations and impacts from rough roadways may require adjustment.

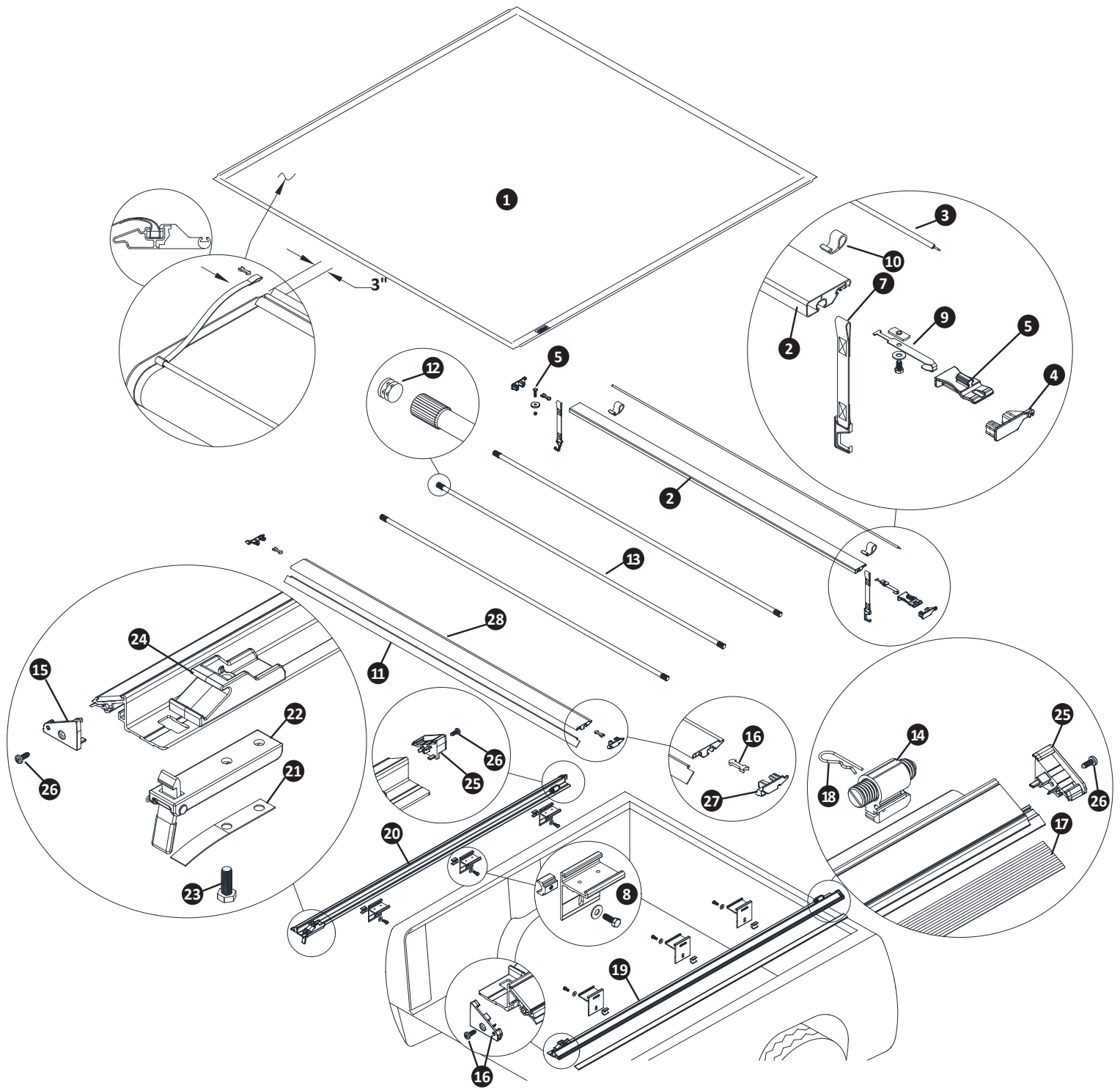
FAQ

WHY IS THERE A HOLE PUNCHED AT THE REAR OF THE PASSENGER SIDE RAIL OF THE TRUXEDO LO PRO, DEUCE AND PRO X15 BUT NO LATCH?

All side rails are punched identically to keep them uniform, to ensure manufacturing efficiency and to reduce tooling costs. By doing this, TruXedo can build and ship more covers while maintaining competitively priced products of the highest quality.

WHY IS MY COVER HOLDING WATER AFTER IT RAINS?

Water pooling on the cover is normal because our cross bows are not arched. Since they are designed to sit flat some water may accumulate on the top of the cover. Once you drive your truck, the water will shed from the cover. Make sure to retighten the fasteners along the length of the bed.



REPLACEMENT PARTS

- | | | | | | | | | | |
|----|---|--------------------|-------------------------------------|---------|------------------|------------------------------|---------|----------------------------|--|
| 1 | * | Replacement Cover | 11 | 1118404 | Header Seal Rear | 21 | 1114773 | Flat Spring, 5/8" x 3 7/8" | |
| 2 | * | Black Front Header | 12 | 1705052 | End Plug, 1" OD | 22 | 1704213 | Latch Assembled | |
| 3 | | 1119136 | Header Seal Front | 13 | * | Black Bow | 23 | 1702926 | Cap Screw, 5/16" x 7/8" |
| 4 | | 1118915 | Front Header End Plugs (Set of Two) | 14 | 1115356 | Tension Control | 24 | 1704187 | Header Stop |
| 5 | | 1704707 | Header Guide | 15 | 1118987 | Rear Side Rail End Plugs (2) | 25 | 1118950 | Front Side Rail End Plugs (Set of Two) |
| 6 | * | * | | 16 | 1115354 | Header Insert Retainer Clip | 26 | 1706547 | Square Head Screw (#1 Drive) |
| 7 | * | Retainer Strap | | 17 | 1115174 | Hook Fastener Strips | 27 | 1117467 | Rear Header 08 End Plugs (Set of Two) |
| 8 | | 1119129 | Clamp Bracket Replacement (1) | 18 | 1706762 | Hitch Pin, Driver side | 28 | * | Black Rear Header |
| 9 | | 1117594 | Header Guide Retainer Assy. | | 1706832 | Hitch Pin, Passenger side | | | |
| 10 | | 1705192 | Extruded Retainer Loop | 19 | * | Side Rail, Passenger Side | | | |
| | | | | 20 | * | Side Rail, Driver Side | | | |

* Please specify length or make and model of vehicle.