

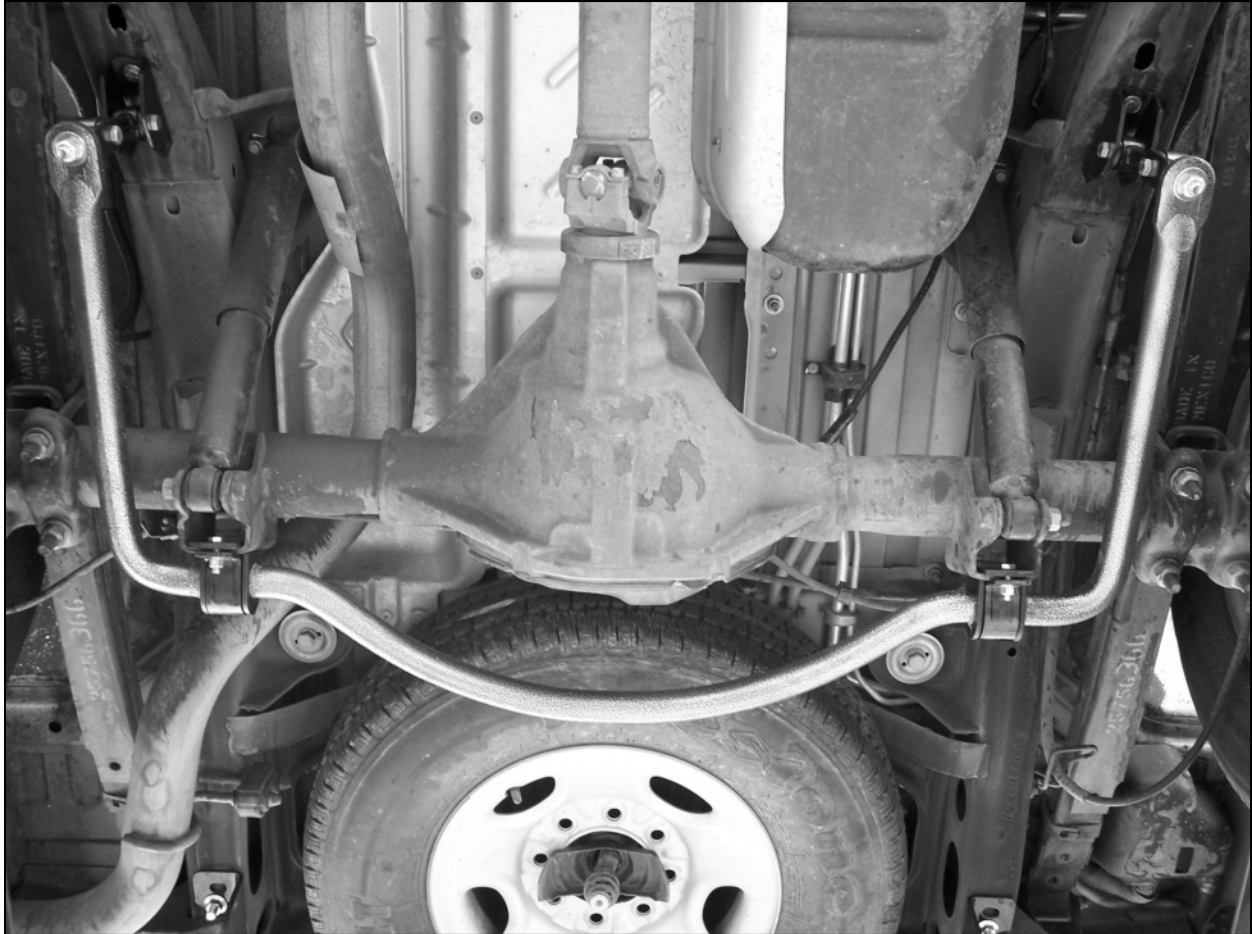
Hellwig PRODUCTS.com

559-734-7451 800-367-5480 FAX 559-734-7460

INSTALLATION INSTRUCTIONS REAR STABILIZER BAR 2500-3500 EXPRESS VAN

Thank you for purchasing a quality Hellwig Product.

PLEASE READ THIS INSTRUCTION SHEET COMPLETELY BEFORE STARTING YOUR INSTALLATION



TORQUE TABLE

BOLT SIZE: 3/8" = 20-30 ft. lbs. - 7/16" = 35-45 ft. lbs. - 1/2" = 50-70 ft. lbs. - 9/16" = 70-90 ft. lbs.

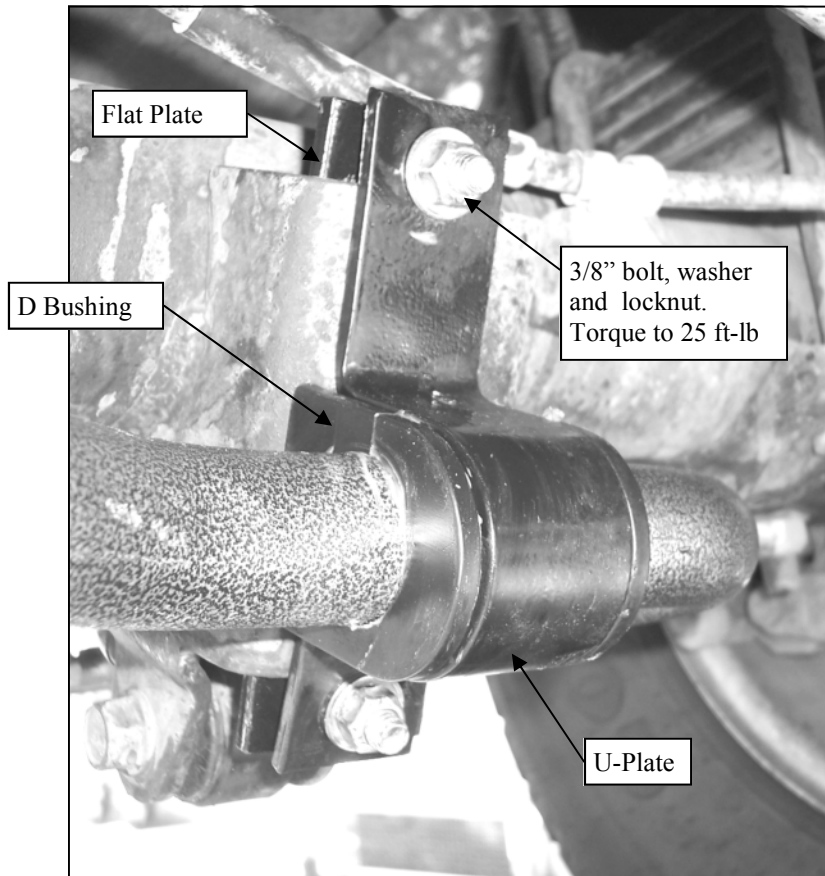
SAFETY: BEFORE STARTING YOUR INSTALLATION, BE SURE TO SET PARKING BRAKE AND CHOCK THE TIRES.

NOTE: THIS SWAY BAR IS TO BE MOUNTED ON THE REAR OF THE AXLE SHOCK MOUNT BRACKETS WITH THE ARMS OF THE BAR TOWARDS THE FRONT OF THE VEHICLE.

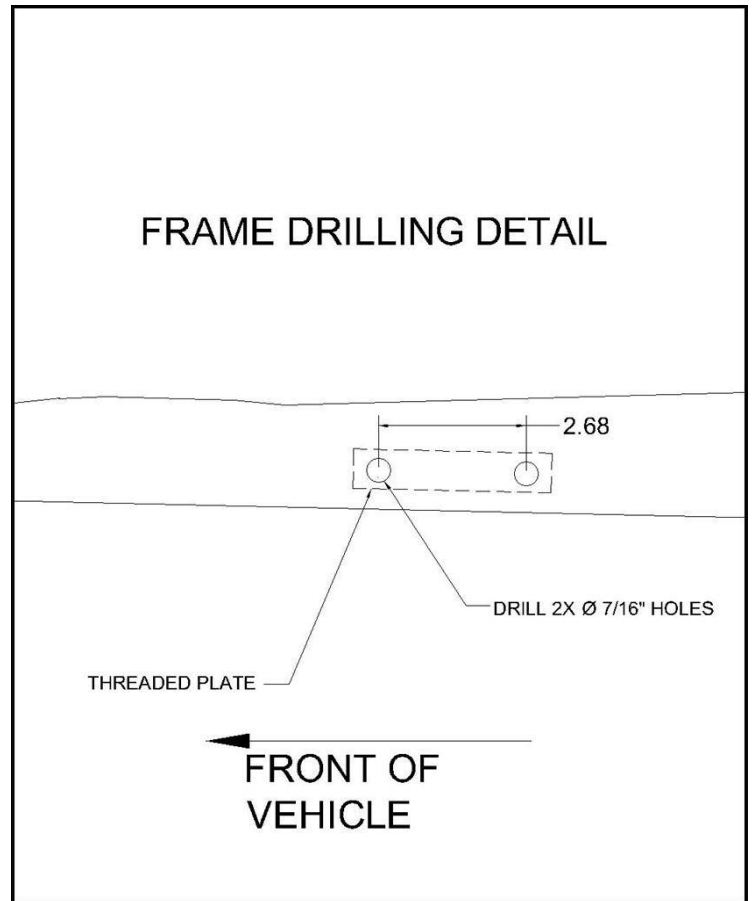
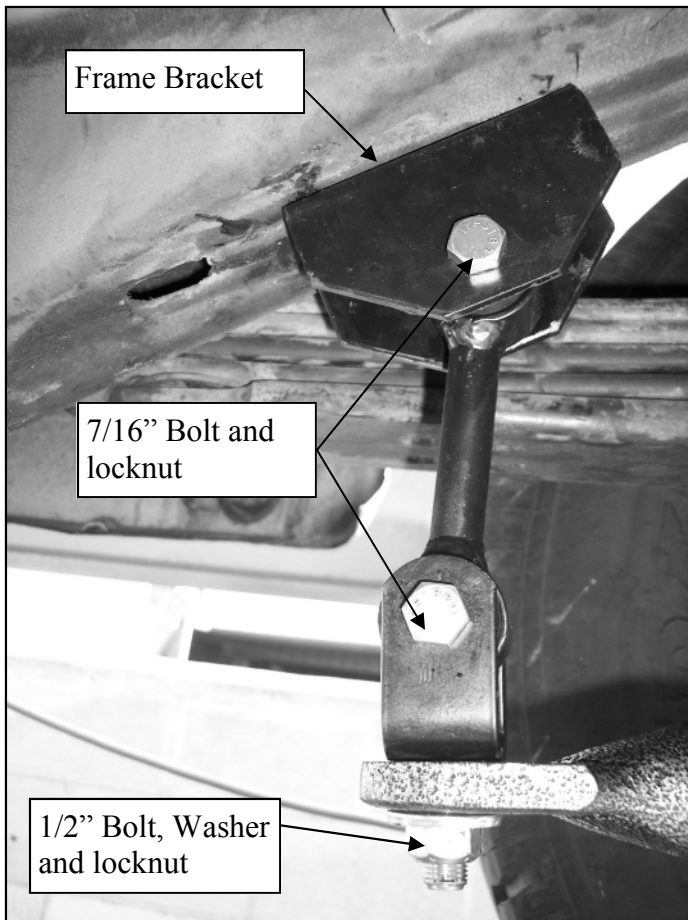
NOTE: THIS KIT INCLUDES LOCKNUTS WHICH REQUIRE TIGHTENING WITH A WRENCH AFTER BEING STARTED BY HAND.

Hellwig PRODUCTS.com

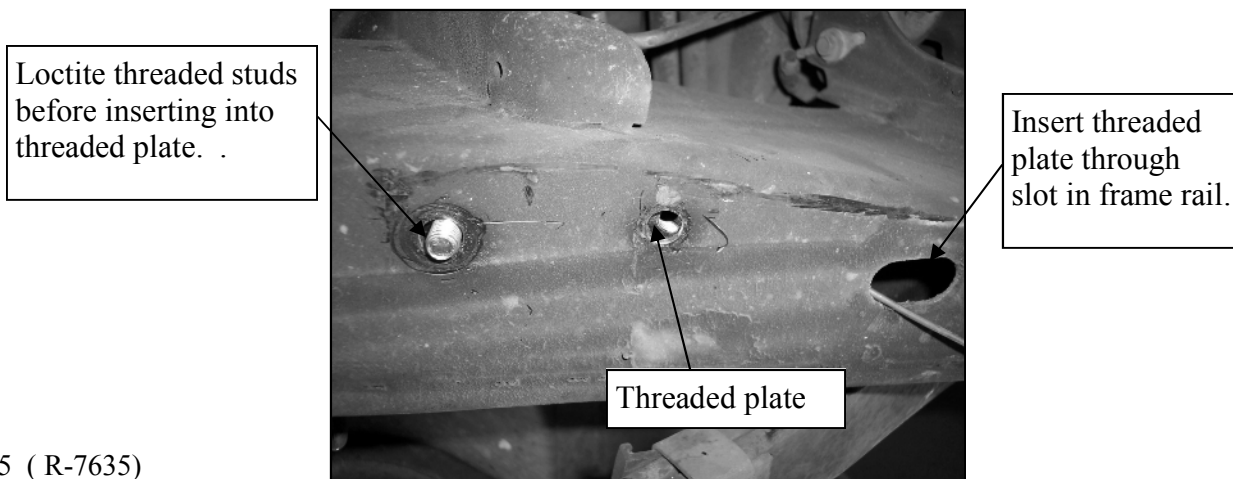
559-734-7451 800-367-5480 FAX 559-734-7460



1. Lubricate the center of the D-shaped poly bushings and install them on the flat areas of the sway bar on each side of the center hump. Align the D-bushings with the flat areas on the rear of the axle shock mount brackets.
2. Position the U-plates over the D-bushings on the sway bar so that the long ends of the U-plates are pointing upwards. Slip the flat plates behind the shock mounts and fasten with 3/8 x 1-1/2" bolts washers and locknuts. The threads of the bolts should face rearward to avoid any possible contact with brake or electrical lines. Center sway bar in brackets and torque bolts to 25 ft-lb.



3. Attach clevis to end of sway bar with 1/2 X 1-1/2" bolt, washer and locknut as shown in photo. Torque bolt to 45-50 ft-lb.
4. Assemble the end link assemblies by pressing the hourglass bushing and then the sleeve into the loops of the end links. Lubricate the bushing and sleeve with supplied grease to ease assembly.
5. Loosely attach end links to clevis and frame bracket using 7/16 x 2/1/4" bolt and locknut as shown.
6. Rotate sway bar so that end links and frame brackets are aligned to frame rail as shown above.
7. Mark location of frame brackets on rail. Make sure that brackets and end links are aligned evenly.
8. Lay out location of holes as shown in diagram and drill two 7/16" holes in bottom of rail using the threaded plate as a template.
9. Insert threaded plate into slot in frame rail using the attached wire to position threaded plate in rail. Apply loctite to threaded studs and insert studs into threaded plate





10. Attach frame bracket to rail with 3/8" flange nuts and washers. Torque to 20-25 ft-lb.
11. Attach end links to frame bracket and torque end link bolts to 35 ft-lb.
12. Bounce the vehicle checking for clearance on all under carriage components, exhaust, shocks, wires, brake and fuel lines. Test drive the vehicle recheck your installation readjust if necessary.
13. After one week of driving recheck your installation. Recheck on a regular monthly basis thereafter.

ATTENTION INSTALLER: BE SURE THAT THE CUSTOMER RECEIVES THIS INSTRUCTION SHEET, ALL IMPORTANT NOTE CARDS AND THE WARRANTY FORM

