

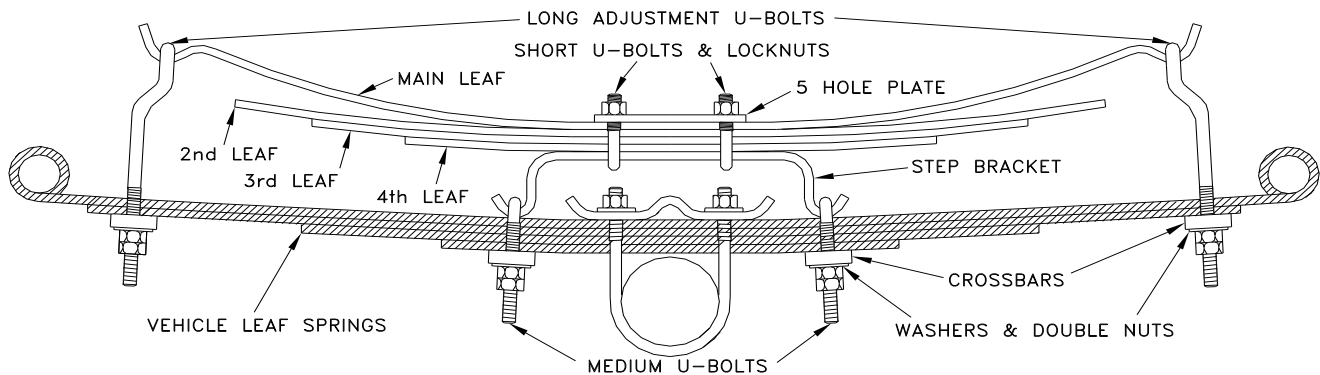
Hellwig PRODUCTS

59-734-7451 800-367-5480 TechSupport@HellwigProducts.com

INSTALLATION INSTRUCTIONS

Thank you for purchasing a quality Hellwig Product.

PLEASE READ INSTRUCTION SHEET COMPLETELY BEFORE STARTING YOUR INSTALLATION



SAFETY: PARK YOUR VEHICLE ON A FLAT LEVEL SURFACE, SET THE PARKING AND CHOCK THE FRONT TIRES.

IMPORTANT NOTES:

1. THIS KIT INCLUDES LOCK NUTS WHICH REQUIRE TIGHTENING WITH A WRENCH AFTER BEING STARTED BY HAND.
2. IF YOUR VEHICLE IS EQUIPPED WITH A BRAKE FLUID PROPORTIONING VALVE ON THE REAR AXLE READ INSERT (R-362)
3. IF YOUR VEHICLE IS EQUIPPED WITH A FACTORY CONTACT OVERLOAD IT MUST BE REMOVED BEFORE INSTALLING THE NEW HELPER SPRINGS
4. YOUR SPRING MAY HAVE A SMALL HOLE IN THE END. THIS IS FOR OUR MANUFACTURING PROCESS AND WILL NOT BE USED.
5. HELLWIG HELPER SPRINGS ARE DESIGNED TO INCREASE THE "LEVEL LOAD" CARRYING CAPACITY OF YOUR VEHICLE. NEVER LOAD THE VEHICLE THAT THIS UNIT IS INSTALLED ON BEYOND THE MANUFACTURER'S MAXIMUM GROSS VEHICLE WEIGHT RATING.

TOOLS REQUIRED:

- 11/16" wrench & deep socket
- 7/8" wrench & deep socket
- 2nd 7/8" wrench or crescent wrench
- Ratchet & Socket extension (optional)
- Torque wrench

STEPS

1. Lay out the spring leaves into two (2) sets. Each will consist of a long, medium and a short leaf. LP-35 kits will include a short 4th leaf.
2. Stack the leaves so that the short leaf is on the bottom and the long leaf is on the top. Use the provided 3/8" bolt, nut and lock washer to fasten leaves together. **Tighten this center bolt completely.**

Hellwig PRODUCTS

59-734-7451 800-367-5480 TechSupport@HellwigProducts.com

3. Place the spring stack on top of the step brackets. Using the provided small U-bolts and lock nuts mount the spring stacks to the Step Brackets with the (5) hole plate. LP-35 kits include longer U-bolts in the leaf spring box. Make sure the springs are straight in line with the Step Bracket and **tighten completely**.
4. Place the assembled springs on top of the truck springs with the long end toward the rear of the vehicle.
5. Place the large offset U-bolts on the ends of the Helper Springs as shown in the diagram on page 1 with the offset away from the ends of the spring. Loosely install the large crossbars with rectangular cutout using provided washers and nuts. The rectangular cutout should sit around the OEM leaf retainers as shown in the photo below. **Leave loose at this time.**
6. Check position of helper springs. Front to rear adjustment may be needed to position the helper springs and clear any vehicle components or spring alignment clamps.
7. Install the medium U-bolts over the ends of the step brackets to attach helper spring pack to vehicle springs using provided crossbars, nuts, & washers. Torque nuts to 40 ft-lbs and double nut.
8. Tighten the end U-bolts to attain the desired pre-load and double nut. The minimum tension adjustment is having enough tension on the end U-bolts so that they do not loosen or rattle and move when the vehicle is driven over rough or bumpy surfaces. Maximum adjustment is when the leaf cups have been deflected two (2) inches from their free state. **DO NOT EXCEED THE MAXIMUM ADJUSTMENT OF 2 INCHES. Be sure to double nut after each adjustment.**
9. Check your installation for clearance on all undercarriage components; wires, fuel and brake lines. Make sure all nuts are properly tightened and double nutted where appropriate. Bounce the vehicle and check clearance on all undercarriage components, mufflers, gas filler pipes, brake lines, emergency brake cable, etc. Test drive the vehicle and recheck your installation, adjust as needed. Recheck on a monthly regular basis thereafter.

TORQUE TABLE:

BOLT SIZE: 3/8" = 20-30 ft. lbs. – 7/16" = 35-45 ft. lbs. – 1/2" = 50-70 ft. lbs. – 9/16" = 70-90 ft. lbs

ATTENTION INSTALLER: BE SURE THAT THE CUSTOMER RECEIVES THIS INSTRUCTION SHEET, ALL IMPORTANT NOTE CARDS AND THE WARRANTY FORM

Maintenance and Inspection:

Your Hellwig Suspension Product is built to last. However, as with all vehicle systems, it requires routine inspection. Inspect your Hellwig installation looking for secure hardware and tight fitting brackets and bushings. If you do not perform this inspection, have your professional mechanic inspect as described.

Thank you for purchasing a quality Hellwig Product.

Hellwig Products Company, located in Visalia, California was founded in 1946 with solutions for load control of loaded passenger cars. The family operated company produces components for trucks, RVs, muscle cars and military vehicles. Hellwig is ISO9001 certified and is proud to develop, test and manufacture products in the USA.

