

INSTALLATION MANUAL

13553

Level of Difficulty

Difficult

Installation difficulty levels are based on time and effort involved and may vary depending on the installer level of expertise, condition of the vehicle and proper tools and equipment.

Weight Carrying Capacity

Gross trailer weight (GTW)	2,000 lbs.
Tongue weight (TW)	200 lbs.

Parts List

Item	Qty	Description
1	4	Round hole spacer, .25" x 1" x 1.5"
2	4	Flange nut, M8 x 1.25"
3	2	Fishwire, 9/16"
4	2	Square hole spacer, .313" x 1.25" x 2" 9/16"
5	2	Carriage bolt, 9/16"-12
6	2	Hex flange nut, 9/16"-12

Tools Required

Ratchet	Socket extensions
Socket, 1/4"	Die grinder with cut off wheel
Socket, 7/8"	Masking tape
Socket, 7mm	Straight screw driver
Socket, 10mm	Plug fastener pry bar
Torque wrench	Tape measure
Torx bit, T-25	Utility knife
Torx bit, T-30	Safety glasses

* For a tools reference guide visit curtmfg.com/trailer-hitch-installation

⚠ WARNING

Never exceed the vehicle manufacturer's recommended towing capacity.

Product Photo



NOTICE

Visit www.curtmfg.com for a full-color copy of this instruction manual, as well as helpful videos, guides and much more!

Before you begin installation, read all instructions thoroughly.

Proper tools will improve the quality of installation and reduce the time required.

This installation requires:

- Lower bumper cover trimming
- Bumper cover removal
- Taillight removal

Periodic inspection of the trailer hitch should be performed to ensure all mounting hardware remains tight and structural components are secure.

To help prevent damage to the product or vehicle, refer to the specified torque specifications when securing hardware during the installation process.

SAFETY INSTRUCTIONS

Safety glasses should be worn at all times while installing this product.

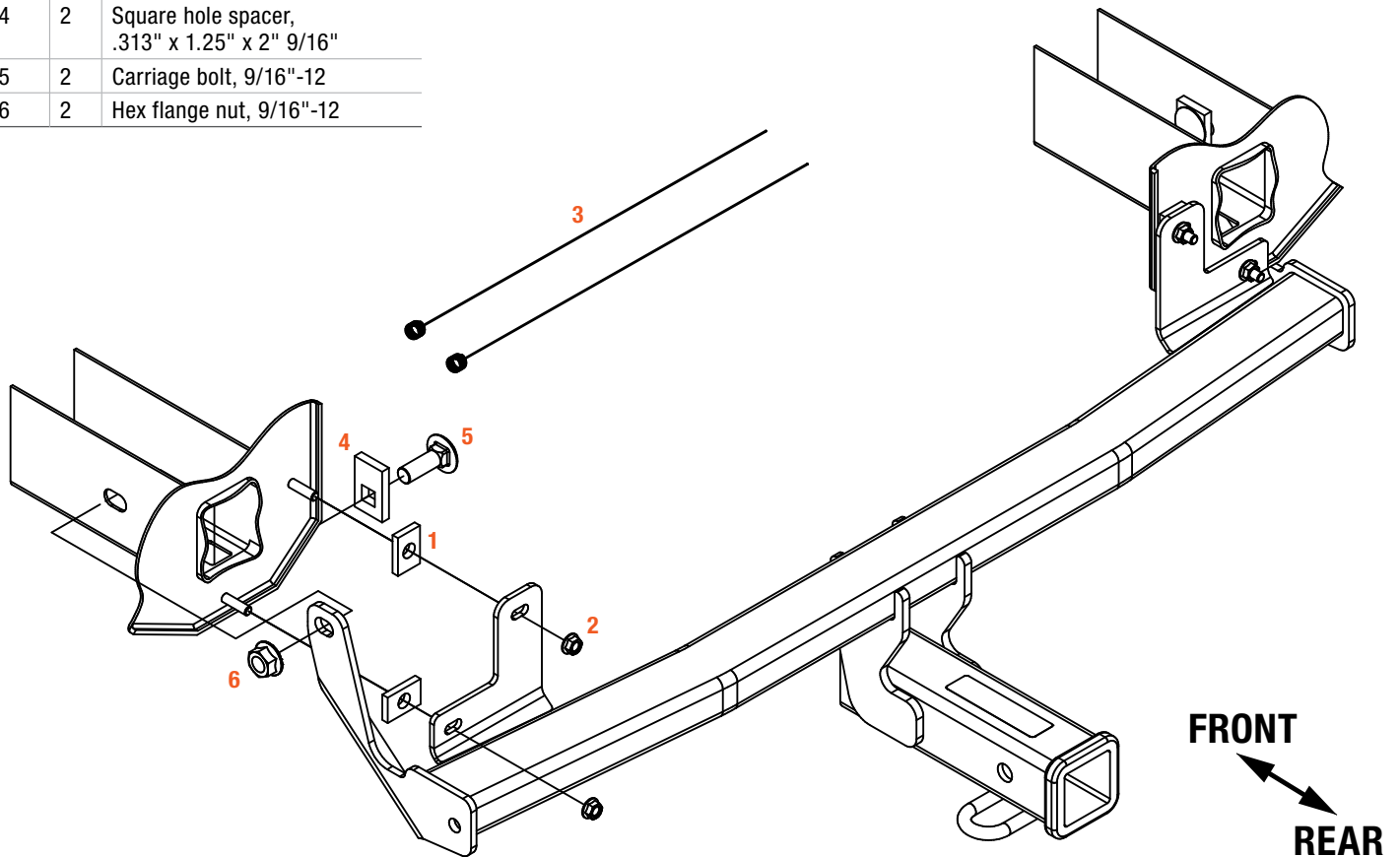
Product Registration and Warranty

CURT stands behind our products with industry-leading warranties. To get copies of the product warranties, register your purchase or provide feedback, visit: warranty.curtgroup.com/surveys

ASSEMBLY

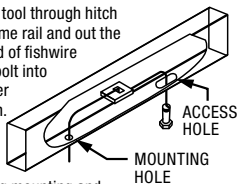
Parts List

Item	Qty	Description
1	4	Round hole spacer, .25" x 1" x 1.5"
2	4	Flange nut, M8 x 1.25"
3	2	Fishwire, 9/16"
4	2	Square hole spacer, .313" x 1.25" x 2" 9/16"
5	2	Carriage bolt, 9/16"-12
6	2	Hex flange nut, 9/16"-12



FISHWIRE TECHNIQUE

Insert coiled end of fishwire tool through hitch mounting hole in vehicle frame rail and out the access hole. Pass coiled end of fishwire through spacer and thread bolt into coil. Kink wire to keep spacer separate from bolt as shown. Pull fishwire, spacer and bolt through frame and out mounting hole. Use fishwire to guide hitch during mounting and prevent loss of bolt or spacer inside frame rail.

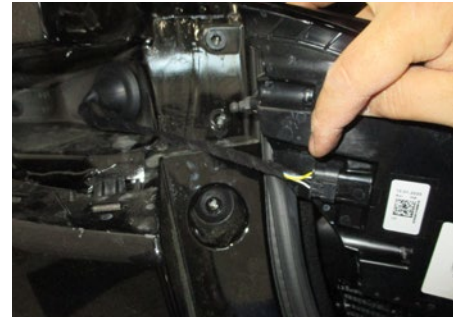


Step 1

Open the rear hatch of the vehicle and open the two plastic covers on each of the taillights.

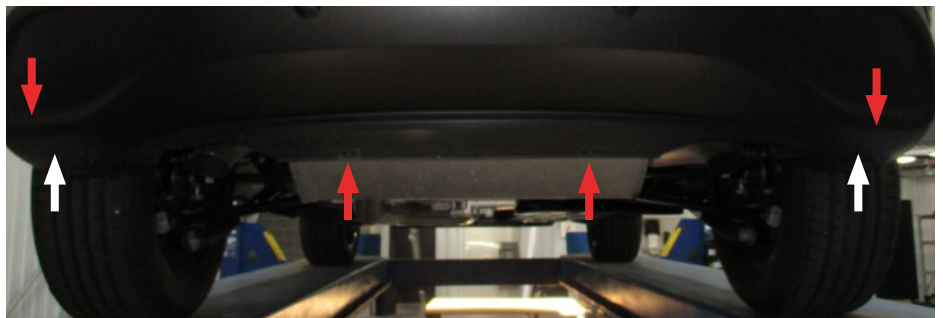
Using a T-30 torx bit, remove the two screws securing the taillight in place. Pull the taillight straight rearward to remove it. There will be a clicking sound once it is fully removed.

Unclip the wiring connector and place both in the hatch of the vehicle.



Step 2

Using the T-30 Torx bit, remove the four wide screws in the bottom side of the bumper cover (red arrows). Use a straight screw driver to remove the two push pins securing the wheel well liner felt to the bottom side of the plastic bumper cover (white arrows).



Step 3

Use a T-25 torx bit to remove the lowest four screws in the rearward side of the felt wheel well liner securing it to the side of the plastic bumper cover. Once removed, use a 1/4" socket to push onto the backside of the green snap fasteners securing the fender trim to the bumper cover.

Repeat this for all three green fastener and one red fastener in the fender trim to expose the hex head screw in the bumper cover. Use a 7mm socket to remove the last screw securing the bumper cover to the side of the vehicle.



Step 4

Repeat steps 2 and 3 on the other side of vehicle.

Once the sides and bottom are loose, use the T-30 torx bit to remove the four wide screws next to the rear hatch gate.



Step 5

Carefully reach behind the bumper cover and pry outward to unclip it from the vehicle. Work from the wheel wells to the taillight openings, then reach behind the driver side and unclip the two wiring connectors and pry the tree fastener for the bumper wiring from the panel next to those connectors.

Continue unclipping the bumper cover around the taillight openings and down around the hatch to the center of the vehicle. The bumper cover should be loose enough to remove. Remove the bumper cover and place in a safe protected area to prevent damage.



Step 6

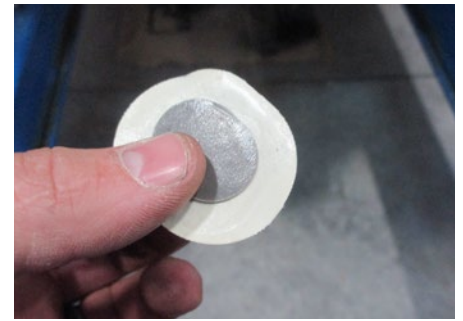
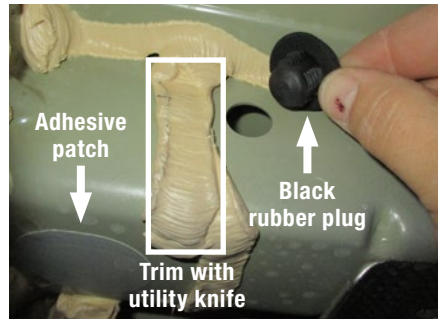
Using a 10mm socket, remove the lower and inner hex nuts from the studs that secure the bumper beam to the vehicle and return them to vehicle owner.



Step 7

Moving to under the vehicle, remove the rearward-most black plug on the side of each frame rail and return to the vehicle owner.

Remove the adhesive patch towards the end of the frame in the bottom and set aside to be reinstalled later. Use a utility knife to trim the sprayed sealer from around the hole that had the black plug.



Step 8

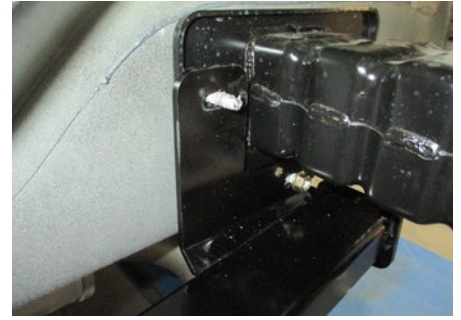
Use the supplied fishwire (#3) to fishwire the 9/16" carriage bolts (#5) and square hole spacers (#4) through the access hole and into the hole that had the black plug, leaving the bolt in the frame. Place the four round hole spacers (#1) onto the bumper attachment studs.



Step 9

Thread the fishwire through the side attachment holes in the hitch and raise the hitch into position onto the four bumper studs and aligning the side holes to the frame holes.

Pull the side bolts through the holes, remove the fishwires and install the 9/16" hex flange nuts (#6). Install the remaining hex flange nuts onto the bumper studs. Reinstall the adhesive patches removed in step 7.



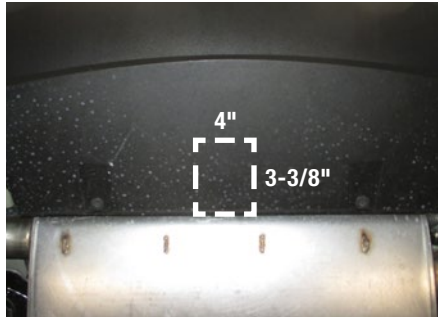
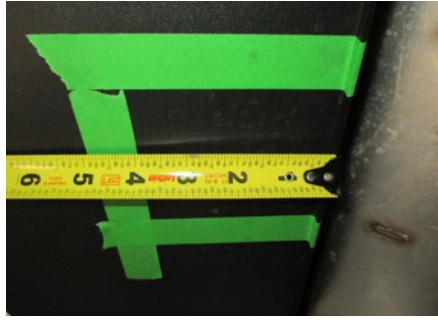
Step 10

Torque all M8 fasteners to 45 ft-lbs. and all 9/16" fasteners to 130 ft-lbs.



Step 11

Looking at the bottom of the bumper, measure 4" from the edge of the bumper. Locate the center of the bottom edge of the bumper cover and measure 1-11/16" to each side and mask. This should be 3 3/8" total.



Step 12

Use the die grinder with a cutoff wheel to trim the measured section from the bumper cover. Loosely fit the cover onto the vehicle, making sure the bumper is trimmed with enough clearance for the hitch and trim more if needed.

Step 13

Reinstall the bumper cover in the reverse order in which it was removed, starting in the center and working outward. Remember to reattach the two wire connectors and tree fastener. Re-install all pins, clips and screws into their original locations and in proper order. Reinstall the taillights.

Final Installed Image



TOWING BASICS & SAFETY INFORMATION

For information on safely towing your trailer, visit curtmfg.com/understanding-towing.