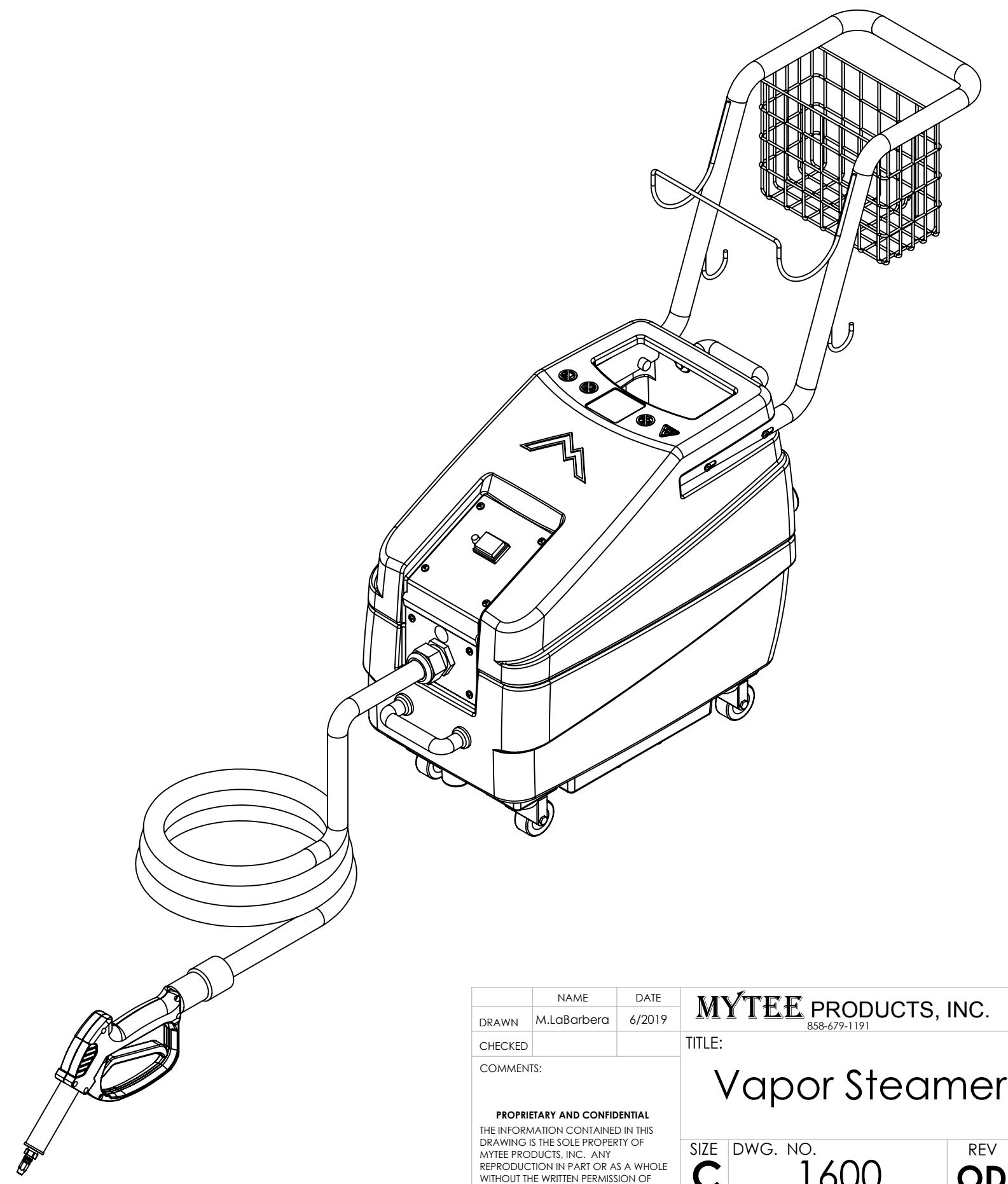


ITEM NO.	PART NO.	DESCRIPTION	QTY.
1	PH719-4	outer hose	1
2	G643	o-ring, 7/16" od x 5/16" id, 5/64 width	1
3	B220	spray nozzle, steamer	1
4	H876	washer, 1/2 flat, s/s	1
5	B142	coupling, 1/4" fpt x 1/4" fpt	2
6	B303	nipple, 3" long x 1/4" npt x 1/4" npt	1
7	H540	gun, high pressure, (batt spray/ counter)	1
8	B105	bushing, brass, 3/8"mpt x 1/4"	1
9	H958	cuff, grey vinyl, 1" hose x 1" female slip	1
10	PH719-15	outer hose	1
11	H172	fitting, strain relief, cord	1
12	H230	screw, 10-32 x 1/2" phil pan head, s/s	32
13	H147	plug, 3/4", black, heyco	1
14	G086	gasket, U channel, 3/16 x 3/4 x 15/32 x 9/16	1
15	A942	pressure hose	1
16	H283	nut, lock, 1" steel, electrical	1
17	H381	front plate	1
18	H485	handle, aluminum grip, black	2
19	H211	washer, 1/4" id x 1" od, flat, s/s	8
20	H202	bolt, 1/4-20 x 3/4" hex head, s/s	6
21	E523	controller, liquid level, steamer	1
22	G641	feet, kettle, steamer	4
23	H316	bolt, 1/4-20 x 1-1/2" hex head, s/s	12
24	H393	kettle, steamer, w/lid, 1600	1
25	H972	coil, heating, 750W, 115V, 1600	1
26	G642	o-ring, 6" od x 1/4" width	1
27	B103	elbow, brass, 90 deg, 1/4"mpt x 1/4" fpt	6
28	B108	valve, brass, 1/4" check	1
29	B248	swivel, 1/4" mpt x 1/4" fpt	1
30	A935	sol hose, pigtail, 1/8 x 5 1/2"	1
31	E527	level probe, steamer	1
32	E524	thermo coupler, steamer	1
33	E574	Thermostat, 310°F ± 10°F, Manual, 1/4"	1
34	B113	tee, 1/4" fpt x 1/4" fpt x 1/4" fpt	1
35	B106	nipple, brass, 1/4" x close	1
36	B200	valve, brass, relief, 500 psi	1
37	B143	street elbow, 90 degrees, 1/8"	2
38	B110	adapter, brass, 1/4" sw barb x 1/4" fpt, w/gasket	3
39	B170	ferrule, 1/4" brass	4
40	PH634-16	sol hose, 1/4", silicone braided, clear	1
41	B194	nipple, hex, 1/4" mpt x 1/8" mpt	1
42	H254	washer, axle, cut 1/2" id	2
43	H210	washer, 1/4" flat, s/s	14
44	H216	nut, lock, 1/4-20, nylon insert, s/s	2
45	H215	nut, hex, 1/4-20 s/s	4
46	H250	bracket, set 55 psi pump	2
47	C378	pump, 55psi, 115V flojet	1
48	H221	nut, lock, 1/2" steel, electrical	1
49	H487	bracket, hinge	1
50	E531	power cord, end, 25', 12/3 black	1
51	H220	fitting, strain relief, cord	1
52	H296	guard, cooling fan, wire	3
53	H304	screw, #8 x 5/8 phil oval, s/s	12
54	P742	base, steamer	1
55	H273	nut, kep, #10-32 zinc	16
56	H681	caster, 2", black hub, gray tread	4
57	H380	switch plate	1
58	E515	switch, rocker, 2 position	1
59	E511	light, red, 250v	1
60	G052	washer, buna 1-1/8" od x 3/16" id	2
61	B109	barb, 1/4" barb x 1/4" mpt	1

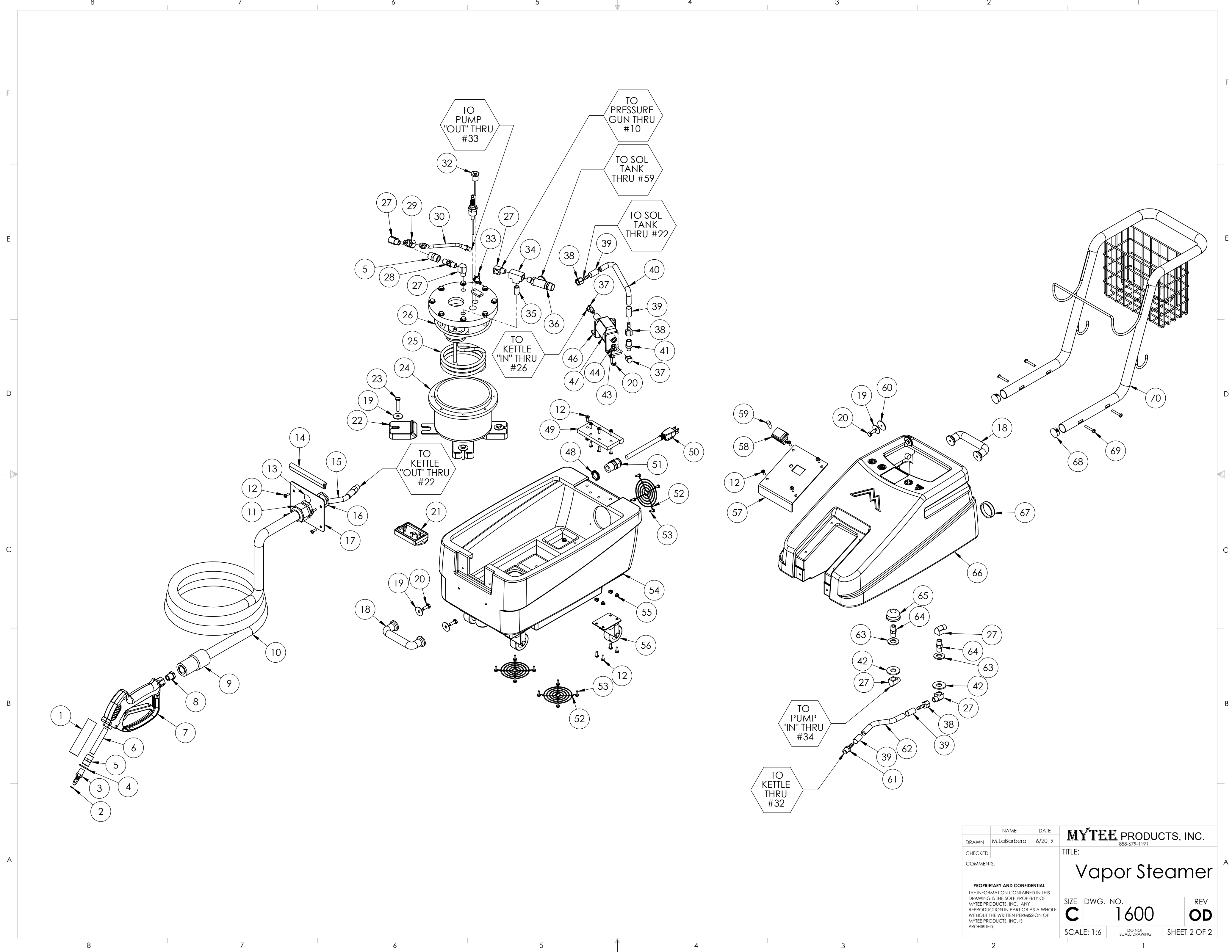
ITEM NO.	PART NO.	DESCRIPTION	QTY.
62	PH634-16	sol hose, 1/4", silicone braided, clear	1
63	H212	flat washer, 9/16"ID x 1 1/16"OD, AN960-C916	2
64	B107	nipple, brass, 1/4"m, hex	2
65	B119	filter, strainer, 1/4"	1
66	P743	solution tank, steamer	1
67	H846B	cap, gallon jug, 1-5/8"	1
68	H423	plug, 7/8", black, heyco	2
69	H222	screw, 10-32 x 1-1/4" phil pan head, s/s	4
70	H688-A	handle w/ basket, MyteeLite	1

ITEMS NOT SHOWN

PART NO.	DESCRIPTION	QTY
E342	harness, electrical, 1500	1
VS04	small nylon brush	3
VS05	large nylon brush	3
VS07	jet nozzle attachment	3
VS15	metal brush	3
VS16	gum scraper tool	3



NAME	DATE	MYTEE PRODUCTS, INC. 858-679-1191	
DRAWN M.LaBarbera	6/2019	TITLE: Vapor Steamer	
CHECKED		SIZE	DWG. NO.
COMMENTS:		C	1600
<small>PROPRIETARY AND CONFIDENTIAL THE INFORMATION CONTAINED IN THIS DRAWING IS THE SOLE PROPERTY OF MYTEE PRODUCTS, INC. ANY REPRODUCTION IN PART OR AS A WHOLE WITHOUT THE WRITTEN PERMISSION OF MYTEE PRODUCTS, INC. IS PROHIBITED.</small>		SCALE: 1:6	DO NOT SCALE DRAWING
		SHEET 1 OF 2	REV OD



	NAME	DATE	MYTEE PRODUCTS, INC. 858-679-1191	
DRAWN	M.LaBarbera	6/2019	TITLE:	
CHECKED			Vapor Steamer	
COMMENTS:	<p>PROPRIETARY AND CONFIDENTIAL THE INFORMATION CONTAINED IN THIS DRAWING IS THE SOLE PROPERTY OF MYTEE PRODUCTS, INC. ANY REPRODUCTION IN PART OR AS A WHOLE WITHOUT THE WRITTEN PERMISSION OF MYTEE PRODUCTS, INC. IS PROHIBITED.</p>			
SIZE	DWG. NO.	REV		
C	1600	0D		
SCALE: 1:6	DO NOT SCALE DRAWING	SHEET 2 OF 2		