

16307

RAM 1500

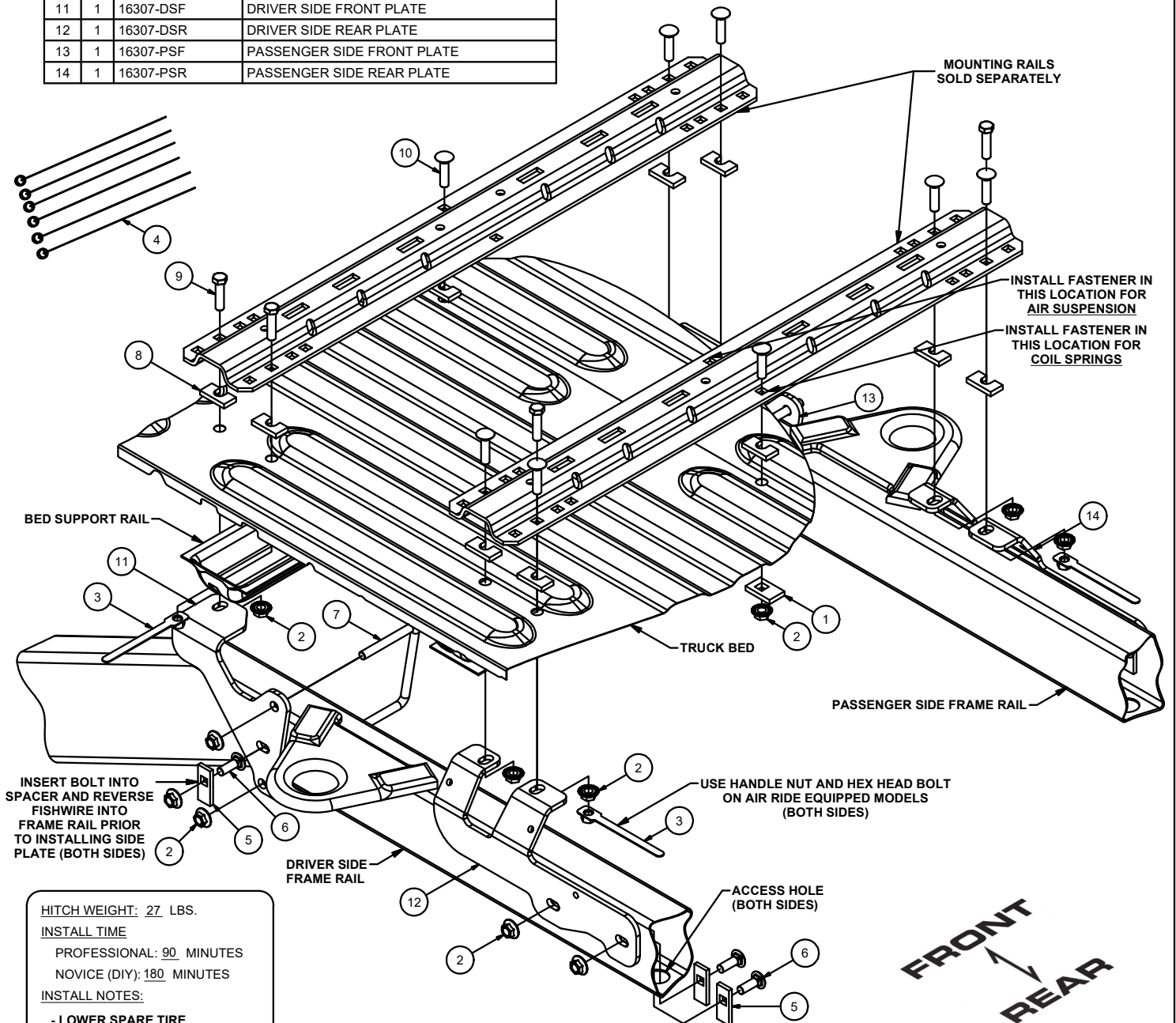
7/2/2019

1 OF 3

***** DO NOT EXCEED VEHICLE MANUFACTURER'S RECOMENDED TOWING CAPACITY *****

Hardware List			
ITEM	QTY	PART NUMBER	DESCRIPTION
1	2	CM-SP73	.313 x 1.25 x 2.00" 9/16" SQUARE HOLE SPACER
2	18	20-00062	NUT, SER-FLANGE, 1/2-13 UNC, GRD8, YZ
3	4	1/2-13	HANDLE NUT
4	6	1_2 x 30 FISHWIRE	1/2" x 30" FISHWIRE
5	6	CM-SP10	.250 x 1.00 x 2.50" SQUARE HOLE SPACER
6	6	10-10287	BOLT, CAR, 1/2-13 UNC, 1-1/2, GRD8, YZ
7	2	CM-1205-UBS	1/2-13 x 4 1/4 x 6 1/8 x 1 1/2 SQ U-BOLT
8	10	CM-SP136	.313" x 1.00 x 2.00" U-SHAPE SPACER
9	4	10-10286	HHCS, 1/2-13 UNC, 2, GRD8
10	8	10-10288	BOLT, CAR, 1/2-13 UNC, 2, GRD8, YZ
11	1	16307-DSF	DRIVER SIDE FRONT PLATE
12	1	16307-DSR	DRIVER SIDE REAR PLATE
13	1	16307-PSF	PASSENGER SIDE FRONT PLATE
14	1	16307-PSR	PASSENGER SIDE REAR PLATE

TOOLS REQUIRED
RATCHET
3/4" SOCKET
TORQUE WRENCH
CENTER PUNCH
DRILL
1/8" & 9/16" DRILL BITS
TAPE MEASURE
GRINDER



HITCH WEIGHT: 27 LBS.

INSTALL TIME

PROFESSIONAL: 90 MINUTES

NOVICE (DIY): 180 MINUTES

INSTALL NOTES:

- LOWER SPARE TIRE
- NO FRAME DRILLING REQUIRED

Curt Manufacturing LLC., warrants this product to be free of defects in material and/or workmanship at the time of retail purchase by the original purchaser. If the product is found to be defective, Curt Manufacturing LLC., may repair or replace the product, at their option, when the product is returned, prepaid, with proof of purchase. Alteration to, misuse of, or improper installation of this product voids the warranty. Curt Manufacturing LLC.'s liability is limited to repair or replacement of products found to be defective, and specifically excludes liability for incidental or consequential loss or damage.

WARNING:

- Do not install mounting rails over plastic bed liners. Plastic liners must be trimmed for metal to metal contact. (Mounting rails may be installed on spray on liner.)
- Use only supplied fasteners for installation.
- Before installing mounting rails and hitch, measure to be sure there will be enough clearance between the truck and trailer to allow for turns.

BEFORE INSTALLATION: Lower spare tire and remove heat shield as needed for access to the bottom of the truck bed.

- 1) Place the rear mounting rail in the box of the truck, using your tape measure, center the rail on the truck box floor and the proper distance from the rear edge of the truck box as shown on the "rail location diagram" page.

****BE SURE TO COMPENSATE FOR THE THICKNESS OF THE SPRAY-IN BED LINER IF PRESENT****

- 2) Using a center punch, mark the holes as per the rail location diagram. Move the mounting rail out of the way and drill each position with a 1/8" drill bit.
- 3) Temporarily position the rear side plate on the side of the frame and check that the 1/8" drilled holes align with the slots of the side plate. Remove the side plate from the vehicle.

NOTE: Move any electrical or braking components that may be trapped between the frame and side plates.

- 4) Enlarge the 1/8" drill holes to 9/16".
- 5) Using the supplied fishwires, install the 1 1/2" carriage bolts and spacers into the mounting locations for the rear side plates. Install the side plates over the bolts remove the fishwires and loosely install the 1/2" hex flange nuts.
- 6) Reposition the mounting rail over the holes and fasten the mounting rail to the side plates using the supplied carriage bolts or hex bolts as needed. Use the supplied spacers between the frame bracket or mounting rails and the truck box so as to ensure a metal to metal contact and to eliminate "rib crush" of the bed.

NOTE: On air ride equipped vehicles, use hex bolts and handle nuts in the rearward most rail mounting hole as shown on page 1.

- 7) Place the unassembled 5th wheel / roller / gooseneck hitch into the already installed mounting rail. Position the front mounting rail with the 5th wheel / roller / gooseneck hitch by inserting the tabs into the mounting rail and pushing the mounting rail tight towards the other mounting rail. Ensure that the mounting rail is centered on the truck box floor. This will position the rail in the correct location and ensure that the 5th wheel will have a snug fit to the truck.

NOTE: If more than one hitch product will be used with the mounting rails then both should be used at the same time to align the second mounting rail. This will ensure that one product does not compromise the fit of the other.

- 8) Repeat steps 2 and 4 for the front mounting rail.
- 9) Place U-bolts, carriage bolts and spacers into position on frame for the front side plates, loosely install the side plates to the side of the frame using the 1/2" hex flange nuts. Grind away excess threads on U-bolts to avoid contact with suspension components.

NOTE: Be careful not to install the U-bolts over any brake lines or electrical wire. The U-bolt should be tight to the frame only.

- 10) Repeat steps 6 and 7 for the front mounting rail.
- 11) Starting with the carriage bolts that fasten the rails to the frame bracket, torque all the nuts. Torque all 1/2" fasteners to 110 lb-ft. Ensure not to crush truck bed when tightening fasteners.
- 12) Reinstall heat shield, spare tire, and any other components that may have been moved during the install.

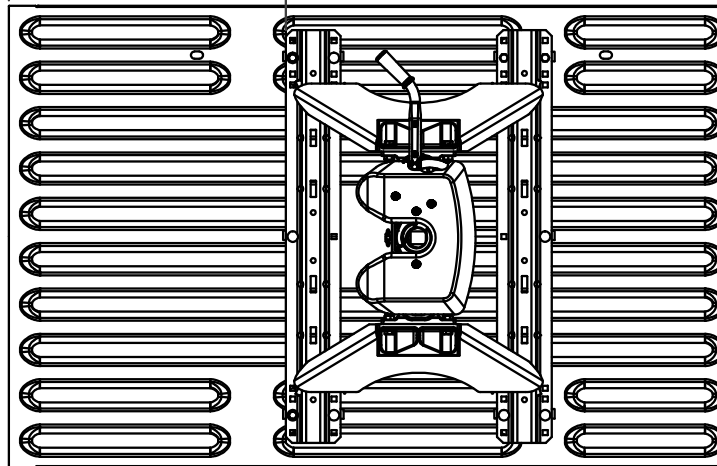
WARNING:

- Do not install mounting rails over plastic bed liners. Plastic liners must be trimmed for metal to metal contact. (Mounting rails may be installed on spray on liner.)
- Use only supplied fasteners for installation.
- Before installing mounting rails and hitch, measure to be sure there will be enough clearance between the truck and trailer to allow for turns.

****BE SURE TO COMPENSATE FOR THE THICKNESS OF THE SPRAY-IN BED LINER IF PRESENT****

SHORT BED ONLY
(EXCLUDING 8' BED)
28 7/8"

TAIL GATE



CAB

SHOWN WITH CURT 16180 5TH WHEEL (SOLD SEPARATELY)

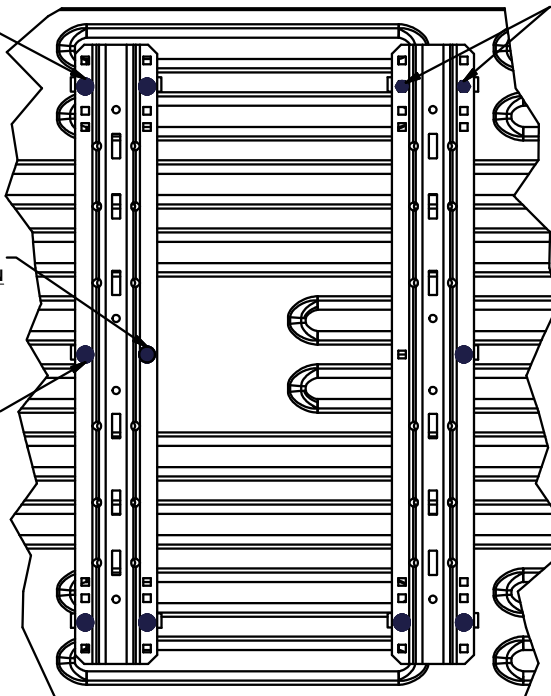
USE HANDLE NUT AND HEX HEAD BOLT ON AIR RIDE EQUIPPED MODELS (BOTH SIDES)

INSTALL 2" HEX HEAD BOLTS IN THESE LOCATIONS

INSTALL FASTENER IN THIS LOCATION FOR AIR SUSPENSION

INSTALL FASTENER IN THIS LOCATION FOR COIL SPRINGS

TAIL GATE



CAB

Curt Manufacturing Inc., warrants this product to be free of defects in material and/or workmanship at the time of retail purchase by the original purchaser. If the product is found to be defective, Curt Manufacturing Inc., may repair or replace the product, at their option, when the product is returned, prepaid, with proof of purchase. Alteration to, misuse of, or improper installation of this product voids the warranty. Curt Manufacturing Inc.'s liability is limited to repair or replacement of products found to be defective, and specifically excludes liability for incidental or consequential loss or damage.