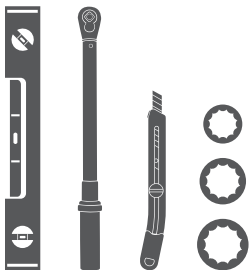


Parts List

1	Driver / left side bar
1	Passenger / right side bar
1	Driver / left front mounting bracket
1	Passenger / right front mounting bracket
2	Mounting bracket, rear
2	Bolt plate, 8mm
5	Hex bolt, 8mm
7	Flat washer, 8mm
7	Lock washer, 8mm
2	Hex nut, 8mm
2	Plastic retainer, 8mm
4	Hex bolt, 10mm
4	Flat washer, 10mm
4	Lock washer, 10mm
4	Bolt / nut plate, 12mm stud
4	Hex bolt, 12mm
4	Flat washer, 12mm x 32mm
4	Flat washer, 12mm
8	Lock washer, 12mm
4	Hex nut, 12mm
4	Plastic retainer, 12mm

Tools Required

Torque wrench	Socket, 13mm
Utility knife	Socket, 16mm
Level	Socket, 18mm



Level of Difficulty

Easy

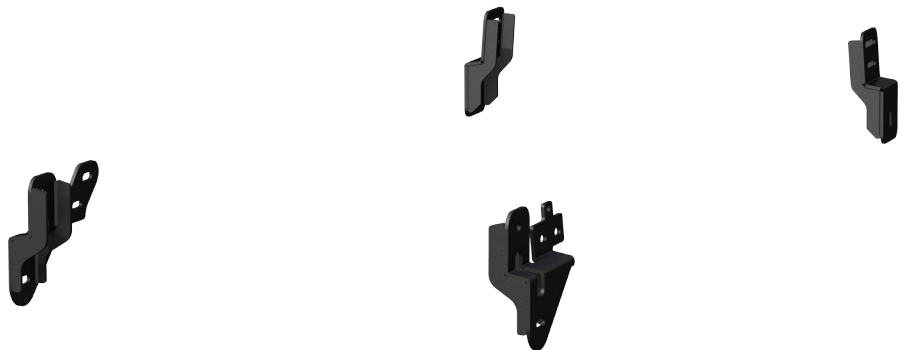


Scan for helpful install tips

Product Image



Brackets



Notes and Maintenance

Before you begin installation, read all instructions thoroughly.

Proper tools will improve the quality of installation and reduce the time required.

To protect the product, wax after installing. Regular waxing is recommended to add a protective layer over the finish. Do not use any type of polish or wax that may contain abrasives that could damage the finish.

For gloss black finishes, mild soap may be used to clean the product.

Step 1

Starting on the driver side, locate the two mounting locations underneath the vehicle.

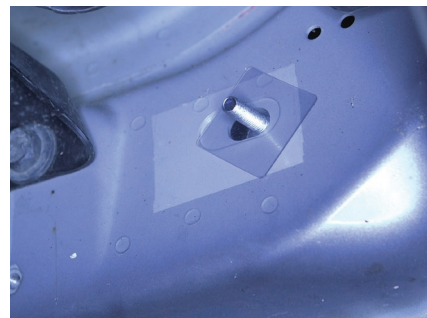
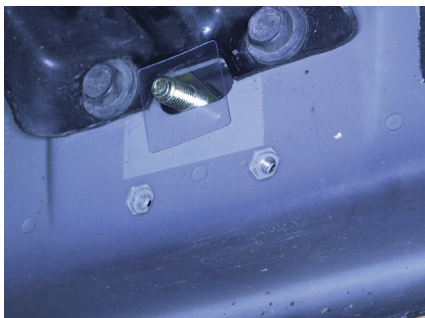


Step 2

Locate the driver-side front mounting location and remove the tape plug from each hole.

Insert an 8mm bolt plate into the hole closest to the front of the vehicle. Slide a plastic bolt retainer over the thread of the bolt to hold it in place.

Insert a 12mm bolt and nut plate into the remaining hole. Slide a plastic bolt retainer over the thread of the bolt to hold it in place.

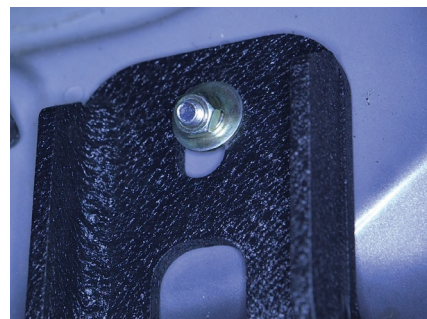


Step 3A - 2015 and newer with factory inserts

Place the driver-side front mounting bracket onto the vehicle and secure the left side of the bracket with a 12mm flat washer, 12mm lock washer and 12mm hex nut on the bolt plate and two 8mm hex bolts, two 8mm flat washers and two 8mm lock washers on the bottom.

Note: The 10mm nut on the 12mm bolt plate will not be used on vehicles with threaded inserts.

Finish securing the right side of the bracket with an 8mm flat washer, 8mm lock washer and 8mm hex nut. Snug the hardware, but do not fully tighten.



Step 3B - 2015 and older without factory inserts

On older model vehicles without factory threaded inserts, install the bracket with the provided 8mm bolt plate and 12mm bolt / 10mm nut plate as directed in step 3A.

Align the 10mm nut with one of the bottom holes in the rocker panel and secure with a 10mm hex bolt, lock washer and nut.



Step 4

To install the rear bracket, insert a 12mm bolt / 10mm nut plate into the slot in the rocker panel. Secure the 12mm stud with a plastic retainer and place the rear bracket in position.

Secure the top of the bracket to the 12mm stud with a flat washer, lock washer and nut.

On 2015 and newer models (with 8mm factory inserts): Secure the bottom of the bracket with one 8mm hex bolt, lock washer and flat washer.

On 2015 and older models (without 8mm factory inserts): Rotate the bolt plate to position the nut behind the lower mounting position and secure with a 10mm hex bolt, flat washer and lock washer.

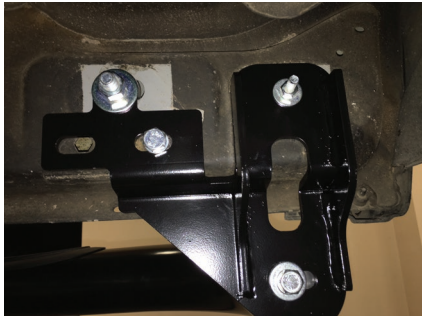


Step 5

Place the side bar onto the brackets and align the mounting holes with the holes in the brackets on the vehicle.

Attach the side bar to the brackets using two 10mm hex bolts, two 10mm lock washers and two 10mm flat washers.

Snug the hardware, but do not fully tighten.



Step 6

Adjust and level the side bar.

With the side bar in position, it is recommended to tighten all brackets to the vehicle first, followed by the side bar connections.



Step 7

Locate the passenger-side front mounting location. Insert a 12mm bolt / 10mm nut plate into the body panel. Slide a plastic bolt retainer over the thread of the bolt to hold it in place.

Insert a second 8mm bolt plate into the remaining top slot on the rocker panel. Slide a plastic bolt retainer over the thread of the bolt to hold it in place.



Step 8

Place the passenger-side front mounting bracket onto the vehicle and secure the top, front location with an 8mm flat washer, lock washer and nut.

Secure the top rear location with a 12mm flat washer, lock washer, and nut.

On 2015 and newer models (with 8mm factory inserts): Secure the bottom of the bracket with one 8mm hex bolt, lock washer and flat washer.

On 2015 and older models (without 8mm factory inserts): Rotate the bolt plate to position the nut behind the lower mounting position and secure with a 10mm hex bolt, flat washer and lock washer.



Step 9

Repeat steps 4 through 6 to complete side bar installation on the passenger side of the vehicle.

Congratulations on the installation of your new ARIES Big Step™ 4" round side bars.

With the side bars installed, periodic inspections should be performed to ensure all mounting hardware remains tight.

To protect your investment, see the 'Notes and Maintenance' section on the first page of this instruction manual.

