

Parts List

1	Driver / left running board
1	Passenger / right running board
2	Mounting bracket, front
2	Mounting bracket, middle
2	Mounting bracket, rear
6	Handle nut, 6mm
8	T-bolt, 10mm tab
6	Hex bolt, 6mm
7	Flat washer, 6mm
7	Lock washer, 6mm
8	Flat washer, 10mm
8	Lock washer, 10mm
8	Hex nut, 10mm
8	Bolt retainer, plastic

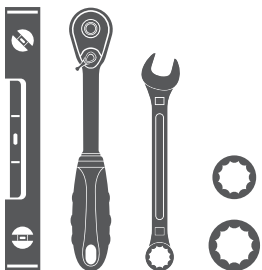
Additional Hardware*

12	Hex bolt, 8mm
12	Flat washer, 8mm
12	Lock washer, 8mm
12	Hex nut, 8mm

* Running boards are supplied with additional hardware. Quantities listed are in addition to the standard supplied hardware.

Tools Required

Ratchet	Socket, 13mm
Level	Socket, 16mm
Wrench, 16mm	



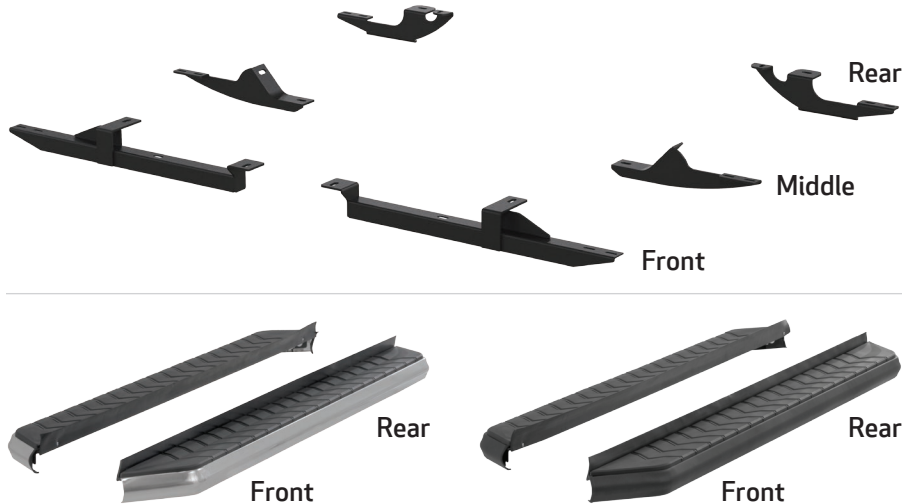
Level of Difficulty

Easy



Scan for helpful install tips

Product Image



Notes and Maintenance

Before you begin installation, read all instructions thoroughly.

Proper tools will improve the quality of installation and reduce the time required.

For stainless steel, polish may be used to clear small scratches and scuffs on the finish. Mild soap may be used also to clean the product.

For black finishes, mild soap may be used to clean the product.

Step 1

Starting on the driver side, locate the three mounting locations underneath the vehicle. Locate the front bracket for the driver side.



Step 2

Locate the hole plug on the front driver and push the plug up and to the side to clear the opening.

Insert a 10mm T-bolt plate into the opening. Slide a plastic bolt retainer over the thread of the bolt to hold the bolt in place.

We recommend using silicone to seal the hole around the bolt plate.



Step 3

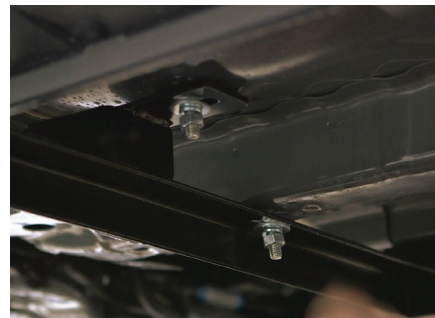
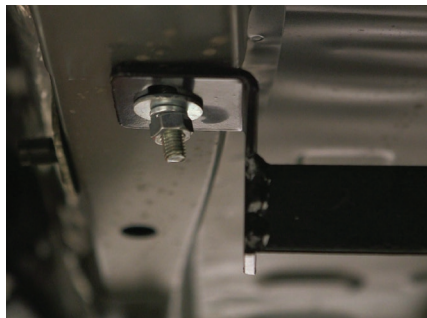
Insert a 10mm T-bolt plate into the remaining two factory mounting holes along with a plastic bolt retainer.



Step 4

Place the front driver side bracket onto the vehicle and secure with a 10mm hex nut, 10 mm lock washer and 10mm flat washer.

Snug the hardware, but do not fully tighten.



Step 5

To mount the middle bracket, bend the head of the 6mm handle nut and insert the head into the mounting point.

Attach the bracket using a 6mm hex bolt, 6mm lock washer and 6mm flat washer.



Step 6

Rotate the bottom of the bracket to the side to expose second the mounting point.

Insert a 6mm handle nut into the mounting point and secure with a 6mm hex bolt, 6mm lock washer and 6mm flat washer.

Snug the hardware, but do not fully tighten.



Step 7

To attach the rear mounting bracket, insert a 6mm handle nut into the factory mounting hole.

Insert a 10mm bolt plate into the oval factory mounting hole and attach a plastic retainer over the thread of the bolt.



Step 8

Attach the rear mounting bracket with a 6mm hex bolt, 6mm lock washer and 6mm flat washer and a 10mm flat washer, 10mm lock washer and 10mm hex nut.

Snug the hardware, but do not fully tighten.



Step 9

Remove the 8mm nuts, 8mm lock washers and 8mm flat washers from the running board.

Place the running board onto the brackets and align the 8mm bolts with the slots in the brackets on the vehicle.



Step 10

Attach the running board to the brackets using six 8mm bolts, six 8mm lock washers, six 8mm flat washers and six 8mm nuts.

Snug the hardware, but do not fully tighten.



Step 11

Adjust and level the running board, centering it between the front and rear wheel wells.

With the running board in position, it is recommended to tighten all brackets to the vehicle first, followed by the running board connections.



Step 12

Repeat steps 1 through 11 on the passenger side of the vehicle.

Congratulations on the installation of your brand new ARIES AeroTread™ running boards.

With the running boards installed, periodic inspections should be performed to ensure all mounting hardware remains tight.

To protect your investment, see the 'Notes and Maintenance' section on the first page of this instruction manual.

