

Parts List

1	Driver / left running board
1	Passenger / right running board
2	Mounting bracket, front
2	Mounting bracket, rear
4	Connecting bracket
8	T-bolt, 88mm tab
8	Hex bolt, 10mm
16	Flat washer, 10mm
16	Lock washer, 10mm
16	Hex nut, 10mm
8	Bolt retainer, plastic

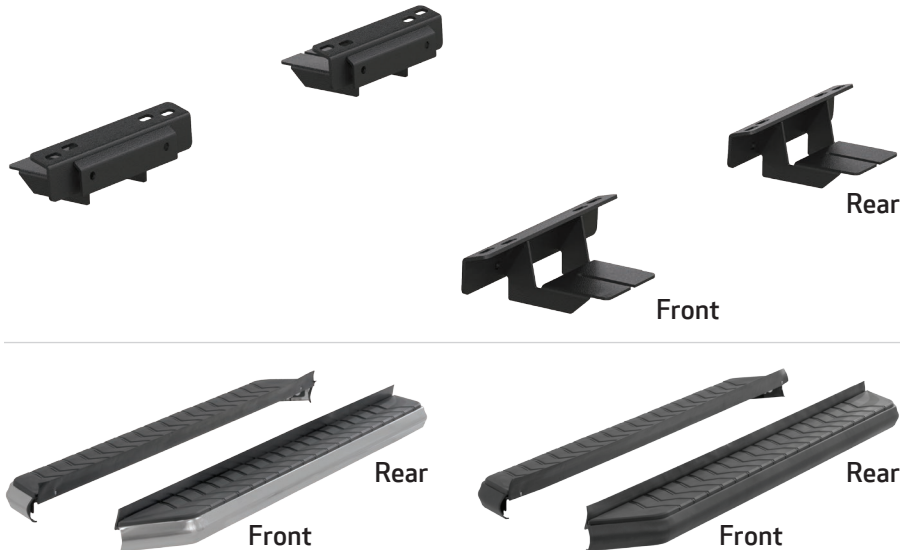
Level of Difficulty

Easy



Scan for helpful install tips

Product Image



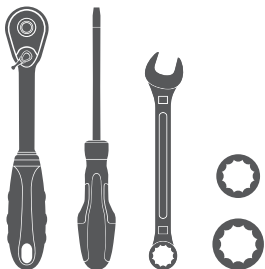
Additional Hardware*

12	Hex bolt, 8mm
12	Flat washer, 8mm
12	Lock washer, 8mm
12	Hex nut, 8mm

* Running boards are supplied with additional hardware. Quantities listed are in addition to the standard supplied hardware.

Tools Required

Ratchet	Socket, 13mm
Wrench, 17mm	Socket, 17mm
Flathead screwdriver	



Notes and Maintenance

Before you begin installation, read all instructions thoroughly.

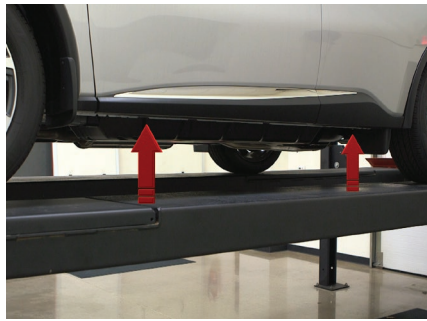
Proper tools will improve the quality of installation and reduce the time required.

For stainless steel, polish may be used to clear small scratches and scuffs on the finish. Mild soap may be used also to clean the product.

For black finishes, mild soap may be used to clean the product.

Step 1

Starting on the driver side, locate the two mounting locations on the inside of the rocker panel. Locate the front bracket for the driver side.



Step 2

Locate the two hole plugs on the front driver-side rocker panel and remove them with a flathead screwdriver.

Place an 88mm tab T-bolt into each rocker panel hole. Place a plastic retainer on both T-bolt studs to hold them in place.



Step 3

Place the front driver-side bracket onto the vehicle and secure with two 10mm hex nuts, two 10mm lock washers and two 10mm flat washers.

Snug the hardware, but do not fully tighten.



Step 4

Place a connecting bracket against the backside of the front mounting bracket.

Insert a 10mm hex bolt and flat washer from the outside of the mounting bracket.

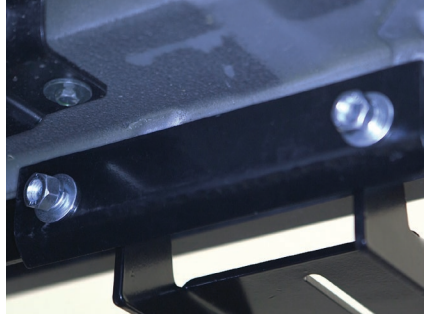


Step 5

Secure the connecting bracket using a 10mm flat washer, 10mm lock washer and 10mm hex nut on each mounting point.

Repeat all the above steps on the driver-side rear mounting bracket.

Snug the hardware, but do not fully tighten.

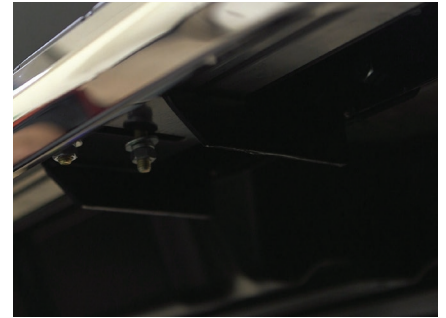


Step 6

Remove the 8mm nuts, 8mm lock washers and 8mm flat washers from the driver-side running board.

Place the running board onto the brackets and align the 8mm bolts with the slots in the brackets on the vehicle.

Attach the running board to the brackets using six 8mm bolts, six 8mm lock washers, six 8mm flat washers and six 8mm nuts. Snug the hardware, but do not fully tighten.



Step 7

Adjust and level the running board, centering it between the front and rear wheel wells.

With the running board in position, it is recommended that all brackets first be tightened to the vehicle, followed by the running board connections.



Step 8

Repeat steps 1 through 7 on the passenger side of the vehicle.

Congratulations on the installation of your brand new ARIES AeroTread™ running boards.

With the running boards installed, periodic inspections should be performed to ensure all mounting hardware remains tight.

To protect your investment, see the 'Notes and Maintenance' section on the first page of this instruction manual.



