

Parts List

1	Driver / left side bar / running board
1	Passenger / right side bar / running board
4	VersaTrac™ mounting bracket, universal
1	VersaTrac™ mounting bracket, driver side, front
1	VersaTrac™ mounting bracket, passenger side, rear
12	Hex bolt, M8 (S)
12	Flat washer, M8 (S)
12	Lock washer, M8 (S)
12	Hex bolt, M8 (B)
12	Flat washer, M8 (B)
12	Lock washer, M8 (B)
12	Hex nut, M8 (B)
6	Hex bolt, M10
6	Flat washer, M10
6	Lock washer, M10
6	Flat washer, M12
6	Lock washer, M12
6	Hex nut, M12
6	T-bolt, M12 tab
6	Bolt retainer, plastic

(S) = Silver hardware
(B) = Black hardware

Tools Required

Ratchet	Socket, 13mm
Torque wrench	Socket, 14mm
Utility knife	Socket, 17mm
Level	

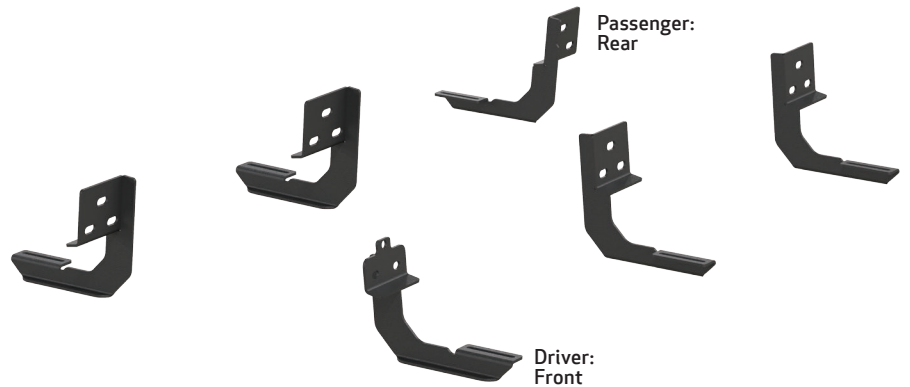
Level of Difficulty

Easy

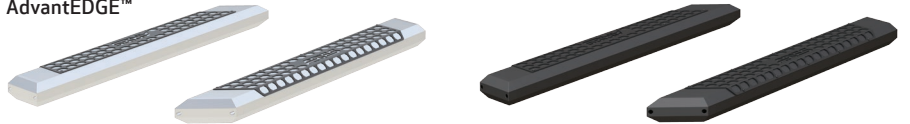


Scan for helpful install tips

Product Image



AdvantEDGE™



RidgeStep™



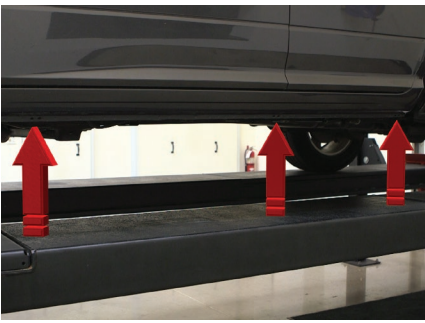
Torque Specifications		
METRIC	M6 bolt	3 ft.-lbs.
	M8 bolt	7 ft.-lbs.
	M10 bolt	16 ft.-lbs.
	M12 bolt	28 ft.-lbs.
SAE	1/4" bolt	3 ft.-lbs.
	5/16" bolt	7 ft.-lbs.
	3/8" bolt	16 ft.-lbs.
	7/16" bolt	20 ft.-lbs.
	1/2" bolt	28 ft.-lbs.

Notes and Maintenance
Before you begin installation, read all instructions thoroughly.
Proper tools will improve the quality of installation and reduce the time required.
For chrome powder coat, polish may be used to clear small scratches and scuffs on the finish. Mild soap may be used also to clean the product.
For black finishes, mild soap may be used to clean the product.
Refer to the table to the left when securing hardware during the installation process to help prevent damage to the product or vehicle.

Step 1

Starting on the driver side, locate the three mounting tabs along the bottom edge of the vehicle.

Locate the front mounting point.



Step 2

Using a utility knife, cut and remove the tape plug covering the third mounting point for the front mounting bracket.

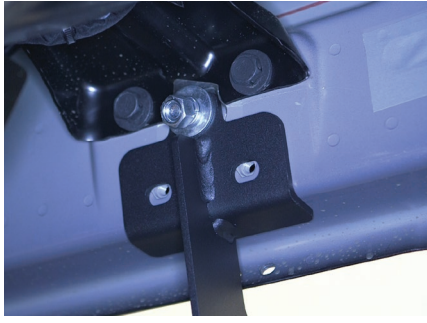


Step 3

Insert an M12 T-bolt plate into the opening. Slide a plastic bolt retainer over the thread of the bolt to hold the bolt in place.

Place the front driver-side bracket onto the vehicle and secure the top portion with an M12 lock washer, flat washer and hex nut.

Snug the hardware, but do not fully tighten.



Step 4

Finish securing the front mounting bracket to the vehicle by inserting two silver M8 hex bolts, lock washers, flat washers into the bottom holes of the mounting bracket.

Note: On vehicles not equipped with M8 threaded inserts, align the M10 nut on the M12 T-bolt plate with either hole location on the bracket. Secure using an M10 hex bolt, lock washer and flat washer.



Step 5

Locate the middle mounting location and one of the universal mounting brackets.

Insert an M12 T-bolt plate into the top mounting position. Slide a plastic bolt retainer over the thread of the bolt to hold the bolt in place. Place the mounting bracket over the stud and secure with an M12 flat washer, lock washer and hex nut.

Secure the bottom of the bracket with two silver M8 hex bolts, lock washers and flat washers. Snug the hardware, but do not fully tighten.

Note: On vehicles not equipped with M8 threaded inserts, align the M10 nut on the M12 T-bolt plate with either hole location on the bottom of the bracket. Secure using an M10 hex bolt, lock washer and flat washer.



Step 6

Locate the rear mounting location and repeat step 5 to secure one of the remaining universal brackets to the rear location on the driver side.



Step 7

Repeat step 5 for the front, middle and rear mounting locations on the passenger side. The front and middle locations will use universal brackets.

Note: The rear passenger-side bracket is not universal and is identified with a notch cut into the back of the bracket as shown.



If installing RidgeStep™ running boards, skip to Step 9A

Step 8A - AdvantEDGE™ Side Bars

Carefully place the side bar onto the mounting brackets.

Ensure the outer edge of the side bar is lined up with the outer edge of the mounting brackets.

Locate the round slots on the base of the side bar.

Insert a pair of black M8 hex bolts into the rail slots for each bracket.

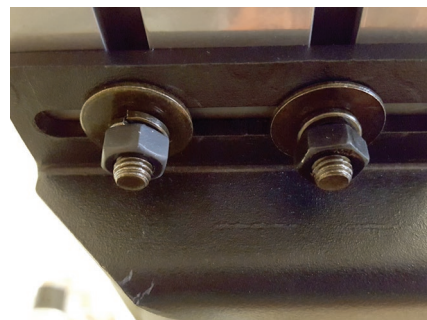


Step 8B - AdvantEDGE™ Side Bars

Slide the bolts down the rail so that two bolts are positioned for each bracket.

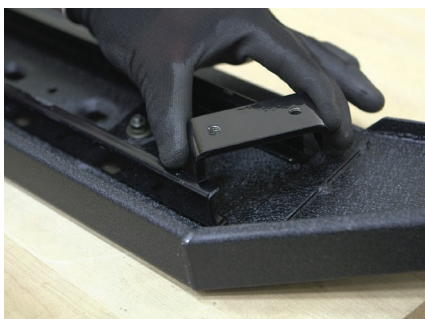
Carefully lift the side bar up and move the bolts as necessary so they are in line with the slots on the mounting brackets.

Secure the side bar to the brackets using black flat washers, lock washers and M8 hex nuts. Snug the hardware, but do not fully tighten. Continue to step 10.



Step 9A - RidgeStep™ Running Boards

Slide the three C-shaped track mounting brackets into the rail slots.



Step 9B - RidgeStep™ Running Boards

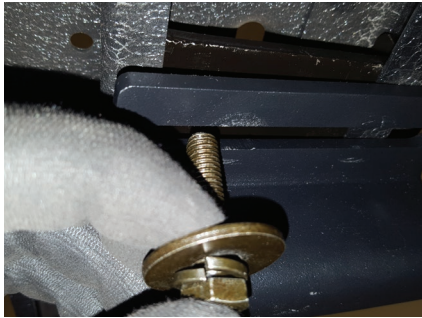
Carefully place the running board onto the mounting brackets.

Align the C-shaped track mounting brackets with the mounting brackets on the vehicle.



Step 9C - RidgeStep™ Running Boards

Attach the C-shaped track mounting brackets to the mounting brackets using black M8 hex bolts, lock washers and flat washers.

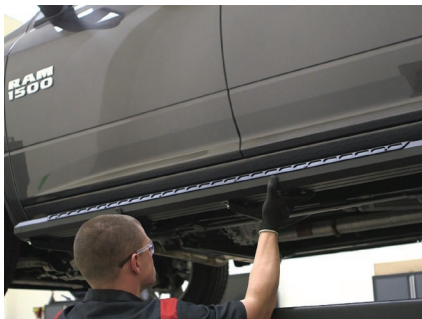


Step 10

At this time, adjust the side bar / running board to the desired location.

With the side bar / running board in position, it is recommended to tighten all brackets to the vehicle first, followed by the side bar / running board connections.

For recommended torque specifications, refer to the table on page two.



Step 11

Repeat steps 8 through 10 to install the side bar / running board to the brackets on the passenger side of the vehicle.

Congratulations on the installation of your new ARIES AdvantEDGE™ side bars / RidgeStep™ running boards.

With the side bars / running boards installed, periodic inspections should be performed to ensure all mounting hardware remains tight.

To protect your investment, see the 'Notes and Maintenance' section on the second page of this instruction manual.

