

Parts List

1	Driver / left rocker step
1	Passenger / right rocker step
1	Driver / left mounting bracket, front
1	Passenger / right mounting bracket, front
1	Driver / left mounting bracket, rear
1	Passenger / right mounting bracket, rear
1	Driver / left nut plate, rear
1	Passenger / right nut plate, rear
4	Bolt, M8 x 35mm
4	Flat washer, M8
4	Lock washer, M8
14	Bolt, M10 x 35mm
2	Bolt plate, M10 x 35mm
20	Flat washer, M10
16	Lock washer, M10
6	Nut, M10

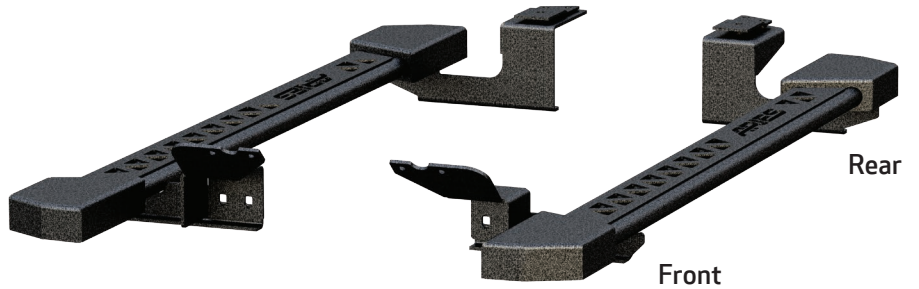
Level of Difficulty

Moderate



Scan for helpful install tips

Product Image



Notes and Maintenance

Before you begin installation, read all instructions thoroughly.

Proper tools will improve the quality of installation and reduce the time required.

For black finishes, mild soap may be used to clean the product.

Refer to the table to the below when securing hardware during the installation process to help prevent damage to the product or vehicle.

Tools Required

Torque wrench	Socket, 13mm
Socket extension	Socket, 16mm
Socket wrench	Wrench, 16mm
Drill	Drill bit, 1/8"
Flathead screwdriver	Drill bit, 7/16"

Torque Specifications

METRIC		SAE	
M6 bolt	3 ft.-lbs.	1/4" bolt	3 ft.-lbs.
M8 bolt	7 ft.-lbs.	5/16" bolt	7 ft.-lbs.
M10 bolt	16 ft.-lbs.	3/8" bolt	16 ft.-lbs.
M12 bolt	28 ft.-lbs.	7/16" bolt	20 ft.-lbs.
--	--	1/2" bolt	28 ft.-lbs.

Use above torque setting unless otherwise noted

Step 1

Starting on the passenger side, locate the two mounting points along the bottom edge of the vehicle.



Step 2

Locate the two factory bolts in the front of the vehicle and remove them.

Locate the rear mounting point near the rear fender and remove the two plastic plugs securing the rear inner fender liner.



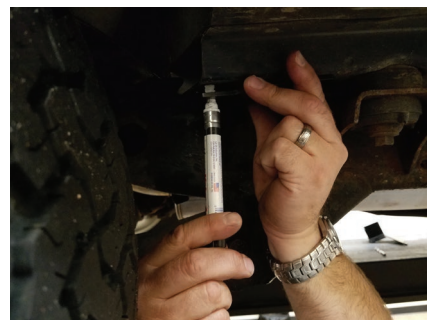
Step 3

Pull the rear plastic inner fender liner back, exposing the end of the channel on the body.



Step 4

Use the passenger-side nut plate to mark the locations of the two holes that need to be drilled.



Step 5

Drill out both marked locations with a 1/8" drill bit first, followed by the 7/16" drill bit.

Slide the passenger-side nut plate into the body channel and ensure all fasteners can be started before proceeding to next step.

Note: Holes may need to be reamed larger for proper fit.



Step 6

Attach the front mounting bracket to the Jeep using two M8 bolts, two M8 lock washers and two M8 flat washers.

Snug the hardware, but do not tighten at this time.

Slide the M10 bolt plate into the Jeep and fasten with an M10 nut, lock washer and flat washer.

Snug the hardware, but do not tighten at this time.



Step 7

At the rear mounting location, make sure all three mounting points are aligned.

Fasten the rear mounting bracket to the Jeep using three M10 bolts, three lock washers and three flat washers.

Snug the hardware, but do not tighten at this time.



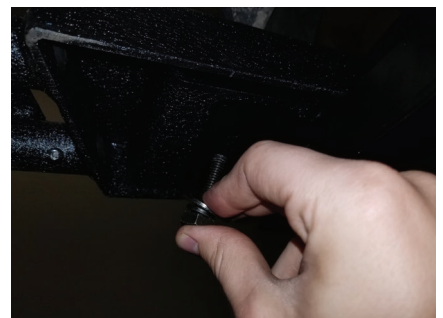
Step 8

With assistance, place the passenger-side rocker step on the rear mounting bracket and fasten to the front mounting bracket using two M10 bolts, two lock washers and two flat washers.

Snug the hardware, but do not tighten at this time.

Fasten the rear mounting bracket to the rocker step using two M10 bolts, two lock washers and two flat washers.

Snug the hardware, but do not tighten at this time.



Step 9

Tighten the three M10 fasteners on the rear mounting bracket to the body of the Jeep. Tighten the M10 nut on the bolt plate on the front mounting bracket of the Jeep.

Tighten the two M8 fasteners on the front mounting bracket to the body of the Jeep.



Step 10

Adjust and level the rocker step to the desired location.



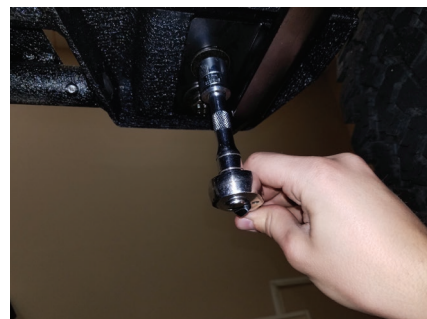
Step 11

Adjust and level the rocker step to the desired location.

After adjustments are made, tighten the two fasteners between the rocker step and the front mounting bracket, and the two M10 fasteners between the rocker step and the rear mounting bracket.

Pull the rear inner fender liner back over the rear mounting location and re-install the plastic plugs as needed.

Repeat this process on the drivers side of the vehicle.



Step 12

Congratulations on the installation of your new ARIES rocker steps.

With the rocker steps installed, periodic inspections should be performed to ensure all mounting hardware remains tight.

To protect your investment, see the 'Notes and Maintenance' section on the first page of this instruction manual.

