

Parts List

1	Spare tire extension bracket
4	Reinforcement bracket
8	Clip nut, 8mm
8	Hex head cap screw, M8 x 1.25" - 40, CL8.8
2	Hex head cap screw, M8 x 1.25" - 60, CL8.8
8	Flat washer, M8
8	Lock washer, M8
3	Nylock nut, 1/2" - 20, grade 5

Tools Required

Ratchet	Vice grips
Socket, 13mm	Wrench, 19mm

Torque Specifications

	Torque Specifications	
METRIC	M6 bolt	3 ft.-lbs.
	M8 bolt	7 ft.-lbs.
	M10 bolt	16 ft.-lbs.
	M12 bolt	28 ft.-lbs.
SAE	1/4" bolt	3 ft.-lbs.
	5/16" bolt	7 ft.-lbs.
	3/8" bolt	16 ft.-lbs.
	7/16" bolt	20 ft.-lbs.
	1/2" bolt	28 ft.-lbs.

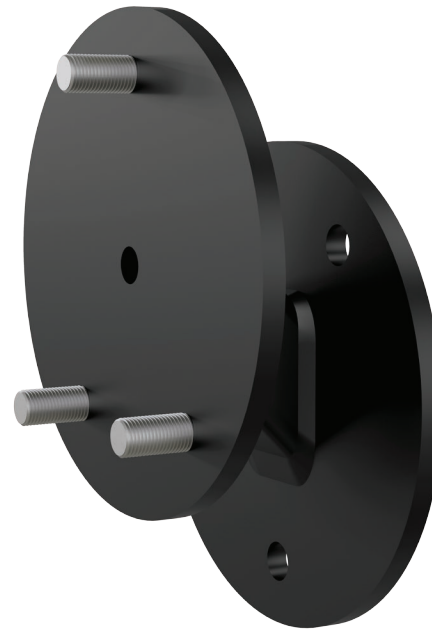
Level of Difficulty

Moderate



Scan for helpful install tips

Product Image



Notes and Maintenance

Before you begin installation, read all instructions thoroughly.

Proper tools will improve the quality of installation and reduce the time required.

For black finishes, mild soap may be used to clean the product.

Caution: If using after market rims and/or lug nuts be sure that the lug nuts are fully seated against the rim before torquing to 60 ft.-lbs. Closed end lug nuts may bottom out on the lugs and not reach the rim allowing the spare tire to move during use. Improper installation could result in damage to your spare tire carrier, rim, and vehicle and will void all warranties related to the use of this product.

Step 1

Remove the spare tire from the factory carrier. The factory-installed carrier will also be removed to add additional support brackets required for larger tires.

Begin removal by opening the rear door.



Step 2

With the rear door open, locate the louvered plastic cover.

Use a flat blade screwdriver to remove the cover, allowing access to the electrical connection of the carrier-mounted brake light.



Step 3

Disconnect the quick connect plug running to the brake light.

Close the rear door and remove the grommet securing the brake light wire.

With the grommet removed, pull the wire and plug out of the door panel.



Step 4

With the brake light wire free, use a 13mm socket to remove the eight hex bolts securing the carrier to the rear door.

With the bolts free, lift the carrier off of the vehicle and set to the side.



Step 5

To install the new support brackets, the factory weld nut must be removed.

Remove the louvered plastic cover that was exposed when the carrier was removed.

Locate one of the M8 x 60mm bolts in the hardware kit and partially thread it into one of the eight factory weld nuts.



Step 6

Clamp the back of the bolt with a vise-grip for additional leverage and pry the bolt up and down until the weld nut breaks free.

Reach through access panel to grab the weld nut and unthread the M8 bolt.

Repeat this for all eight nuts.



Step 7

Locate one of the reinforcement brackets in the hardware pack.

Install two 8mm clip nuts over the ends of the bracket.

Repeat this on all four brackets.

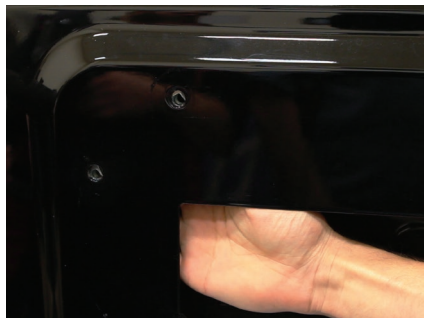


Step 8

With the clip nuts installed on the brackets, align the flat side of the clip nuts with the holes inside the door panel.

Have an assistant lift the tire carrier back into position over the reinforcement bracket and loosely install the M8 flat washer, lock washer and 40mm hex bolt.

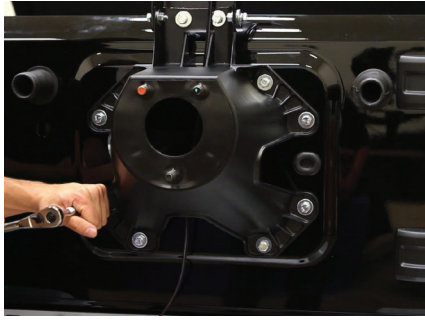
Repeat this for all four support brackets



Step 9

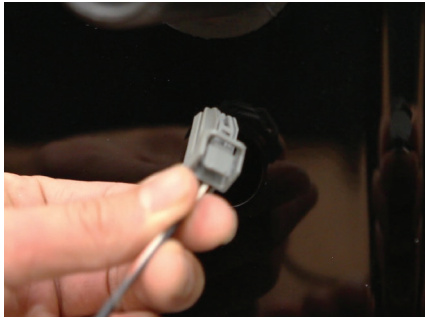
With the 8mm fasteners reinstalled, completely tighten all the hardware.

With the hardware tightened, re-install the louvered panel inside the carrier.



Step 10

Thread the third brake light wire back through the access hole and reinstall the grommet removed in step 3.



Step 11

Open the rear door to access the wiring panel and reconnect the brake light.

With the wire reconnected, replace the louvered panel in the inside of the door removed in step 2.

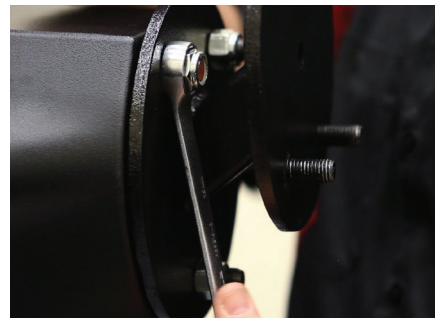


Step 12

With the carrier reinforced, the extension bracket can now be installed.

Place the spare tire extension bracket over the three factory lugs and secure it with the supplied 1/2" - 20 nylock nuts.

Ensure all the hardware is completely tight before reinstalling the spare tire.



Step 13

Lift the spare tire back onto the three mounting lugs and secure with the factory lug nuts.

Finalize the install by confirming all hardware and lug nuts are completely tight.

Caution: If using after market rims and/or lug nuts be sure that the lug nuts can be fully seated against the rim when torquing. Closed end lug nuts may bottom out on the lugs and not reach the rim allowing the spare tire to move during use. Improper installation could result in damage to your spare tire carrier, rim, and vehicle and will void all warranties related to the use of this product.

Finalize the install by confirming all hardware properly installed and lug nuts are properly torqued.

Congratulations on the installation of the ARIES tire relocation bracket.

