

Level of Difficulty

Easy

Parts List

1	Driver / left side upright
1	Passenger / right side upright
1	Driver / left side mounting bracket
1	Passenger / right side mounting bracket
2	Upright covers
2	Spacer washer, tow hook
4	Cap nut, 1/2"-13
4	Flat washer, 1/2"
4	Carriage bolt, 1/2"-13 x 1.25"
4	Hex bolt, 7/16"-14 x 1.25
4	Flat washer, 7/16"
4	Lock washer, 1/2"
2	Flat washer, 1/2"
2	Hex bolt, M14 x 50

Tools Required

Ratchet	Socket set
Torque wrench	Socket extension
Wrench set	--

Torque Specifications

M14 bolt	45 ft.-lbs.
7/16" bolt	30 ft.-lbs.
1/2" bolt	40 ft.-lbs.

Use above torque setting unless otherwise noted

Product Photo



NOTICE

Before you begin installation, read all instructions thoroughly.

Proper tools will improve the quality of installation and reduce the time required.

To help prevent damage to the product or vehicle, refer to the specified torque specifications when securing hardware during the installation process.

Maintenance

To protect the product, wax after installing. Regular waxing is recommended to add a protective layer over the finish. Do not use any type of polish or wax that may contain abrasives that could damage the finish.

For polished, gloss and other smooth finishes, polish may be used to clear small scratches and scuffs on the finish.

Mild automotive detergent may be used to clean the product. Do not use dish detergent, abrasive cleaners, abrasive pads, wire brushes or other similar products that may damage the finish.

Product Registration and Warranty

CURT Group stands behind our products with industry-leading warranties.

Provide feedback and help us to improve our products by registering your purchase at: warranty.curtgroup.com/surveys

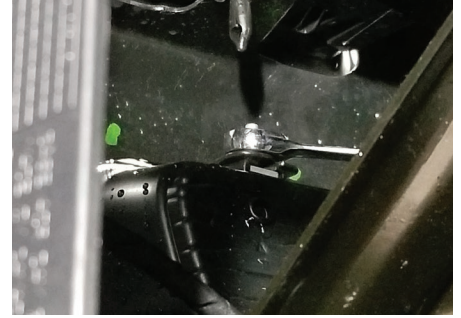
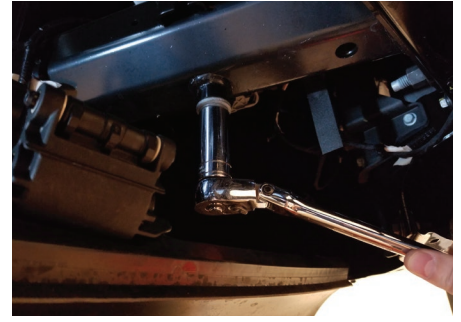
Step 1

Starting on the driver side, locate and remove the factory tow hook bolts and tow hook.

NOTICE

The rear-most tow hook bolt is held in with a retaining washer, making it difficult to remove. It is not required to remove this bolt completely but it is recommended in order to remove the factory rubber bushing.

If the vehicle is not equipped with tow hooks remove the plastic tow hook opening cover and proceed to step 2.



Step 2

Insert the upright mounting bracket through the tow hook opening. Secure the mounting bracket using an M14 hex nut, 1/2" lock washer and 1/2" flat washer in the front location, and the tow hook spacer washer and factory bolt in the rear location.

Snug the hardware, but do not fully tighten.

Repeat steps 1 through 2 on the passenger side of the vehicle.



Step 3

Using two 1/2" carriage bolts, flat washers and cap nuts, secure the upright to the mounting brackets.

Snug the hardware, but do not fully tighten.

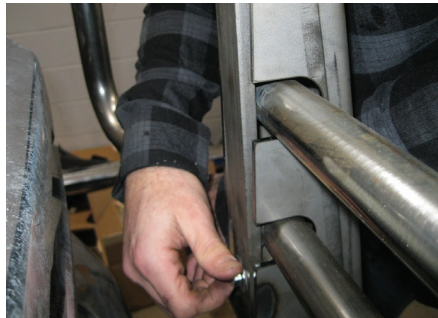
Repeat on the passenger side.



Step 4

Carefully slide the ring between the uprights and the vehicle. Secure the ring and the upright covers using four 7/16" hex bolts, lock washers and flat washers.

Snug the hardware, but do not fully tighten.



Step 5

Tighten the vehicle mounting brackets to the recommended torque specifications listed in the table on page one.

Adjust the guard so that it is upright and level. Tighten the upright hardware to the recommended torque specifications listed in the table on page one.

Congratulations on the installation of your new LUVERNE 2" tubular grille guard.

With the grille guard installed, periodic inspections should be performed to ensure all mounting hardware remains tight.

To protect your investment, see the 'Notes and Maintenance' section on the first page of this installation manual.