

INSTALLATION MANUAL

4055105

Level of Difficulty

Easy

This is the first of two manuals required to complete this installation. The second manual is included with your side bars / running boards.

Parts List

1	Driver / left side bar / running board*
1	Passenger / right side bar / running board*
8	VersaTrac® mounting bracket
32	Hex bolt, M8 (B)
32	Lock washer, M8 (B)
32	Flat washer, M8 (B)

(B) = Black hardware

*Running boards sold separately

Depending on the year of the vehicle, clip nuts may or may not be needed

Tools Required

Ratchet	Torque wrench
Socket set	Level
Socket extension	--

Torque Specifications

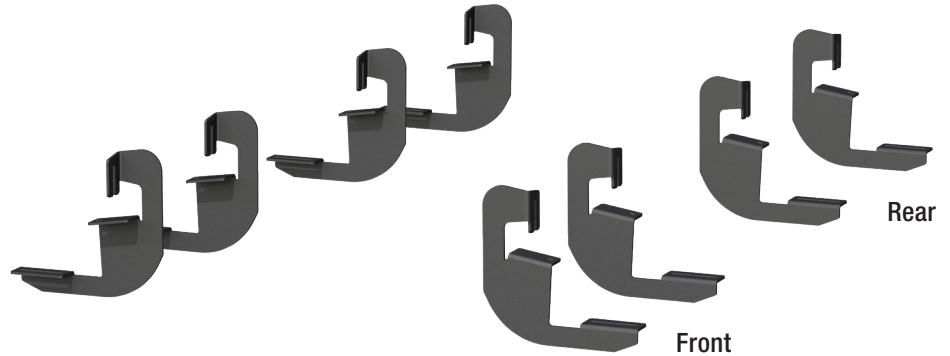
M8 bolt	7 ft-lbs.
---------	-----------

Use above torque setting unless otherwise noted

Product Registration and Warranty

CURT Group stands behind our products with industry-leading warranties. Provide feedback and help us to improve our products by registering your purchase at: warranty.curtgroup.com/surveys

Product Photo



NOTICE

Before you begin installation, read all instructions thoroughly.

Proper tools will improve the quality of installation and reduce the time required.

To help prevent damage to the product or vehicle, refer to the specified torque specifications when securing hardware during the installation process.

Maintenance

To protect the product, wax after installing. Regular waxing is recommended to add a protective layer over the finish. Do not use any type of polish or wax that may contain abrasives that could damage the finish.

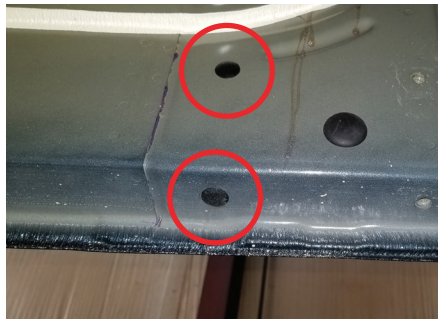
For polished, gloss and other smooth finishes, polish may be used to clear small scratches and scuffs on the finish.

Mild automotive detergent may be used to clean the product. Do not use dish detergent, abrasive cleaners, abrasive pads, wire brushes or other similar products that may damage the finish.

Step 1

Starting on the passenger side, locate the six mounting locations along the inside of the rocker panel. Each location will have two threaded holes directly above / below one another with a plastic cover.

This installation will be using the first, third, fourth and sixth mounting locations.



Step 2

Remove the plastic covers from the threaded holes at the front mounting location.

Attach the bracket to the body panel using an M8 hex bolt, lock washer and flat washer.

Snug the hardware, but do not fully tighten.



Step 3

Secure the bracket with a second M8 hex bolt, lock washer and flat washer, using the factory-threaded nut on the edge of the body panel.

Snug the hardware, but do not fully tighten.



Step 4

Repeat steps 2 and 3 to install the remaining three brackets on the passenger side.

Repeat steps 1 through 4 on the driver side.

Note: To complete the installation, refer to the manual included with your running boards / side steps.

