

Rancher Grille Guard

Installation Instructions

44606 / 46606

Toyota Tundra

2014 - 2015

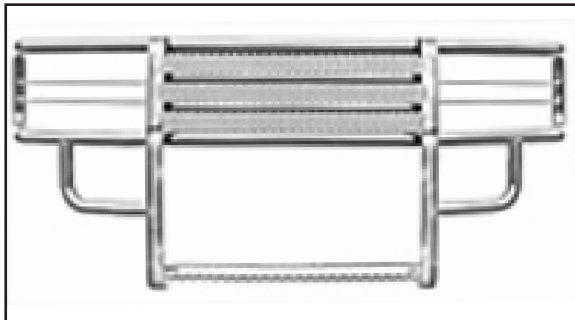


Diagram 1

Parts List:

1 - Rancher Grille Guard	4 - M12 Flat Washers
1 - Driver Top Bracket #46606-5	4 - M12 Lock Washers
1 - Pass. Top Bracket #46606-6	12 - 1/2" x 1 1/2" Bolts
1 - Driver Lower Bracket #46606-7	16 - 1/2" Flat Washers
1 - Pass. Lower Bracket #46606-8	8 - 1/2" SAE Flat Washers
1 - Driver Inner Bracket #46606-9	12 - 1/2" Nylon Lock Nuts
1 - Pass. Inner Bracket #46609-10	
4 - M12 x 50 mm Bolts	*May include extra hardware.

Note: Completely read instructions before beginning installation!

1. Remove the contents from the box and check for missing pieces or damage. The brackets all have the part number stamped into them and are shown in **Diagrams 1, 2, and 3**. If parts are missing or damaged, contact the original place of purchase.
2. Open the hood of the vehicle and locate the (3) nuts on each side of the truck frame that hold the bumper on. The nuts will be on a flange on the outside face of the front of the frame.
3. Locate brackets #46606-9 & #46606-10, shown in **Diagram #4**, at this time. On the driver side remove the three nuts from step #2. Place the driver side bracket #46606-9 over the bolts and flush on the flange. The side of the bracket with the single hole, will be directly above the frame when installed correctly. Replace the (3) nuts and tighten, making sure if the bumper moved to realign it when tightening the nuts. Do not remove the (3) nuts on the passenger side until the driver side nuts are tightened, this can cause the bumper to shift. Repeat this step for the passenger side bracket #46606-10.
4. Locate brackets #46606-5 & #46606-6, shown in **Diagram #2**, at this time. Place (1) 1/2" SAE flat washer onto (2) of the 1/2" x 1 1/2" bolts. On the driver side place bracket #46606-5 through the bumper grille opening as shown in **Diagram #5**. A small amount of trimming will need to be done to the opening for the bracket to pass through. The two holes on the end of the bracket placed through the bumper opening will align with the two holes on top of bracket #46606-9. Place (1) 1/2" bolt with washer through each of the (2) holes in both of the brackets. Place (1) 1/2" SAE flat washer and (1) 1/2" nylon lock nut onto each of the (2) bolts. Do not fully tighten at this time. Repeat this step for the passenger side bracket #46606-6 and attaching it to bracket #46606-10.
5. Locate brackets #46606-7 & #46606-8, shown in **Diagram #3**, at this time. Remove the driver side tow hook located on the underside of the frame. Place bracket #46606-7 up to the bottom of the frame, aligning the holes with the tow hook bolt holes in the frame. Place the tow hook on the underside of the bracket shown in **Diagram #6 & 7**, so the bracket is sandwiched between the tow hook and frame. Place (1) M12 bolt through both of the tow hook mounting holes through the bracket and threading into the frame. Do not fully tighten the bolts at this time. Repeat this step for the passenger side and bracket #46606-8. If vehicle does not have tow hooks, the bolts and brackets will install the same way.
6. Use two people to hold the grille guard up to the mounting brackets. Align the holes on each mounting bracket with the holes on each upright. The brackets may need to be nudged, to get proper alignment with the grille guard. The upper brackets will be on the inside face of the uprights, while the lower brackets will be on the outside face of the uprights, this is shown in **Diagrams #5, 6, & 7**. Using (1) 1/2" x 1 1/2" bolt with (2) 1/2" flat washers, and (1) 1/2" nylon lock nut attach the grille guard to the mounting brackets. Tighten all bolts at this time insuring the grille guard remains centered on vehicle.

Re-check hardware periodically for proper tightness and re-tighten as necessary.

Rancher Grille Guard

Installation Instructions

44606 / 46606

Toyota Tundra
 2014 - 2015

Brackets #46606-5 & #46606-6

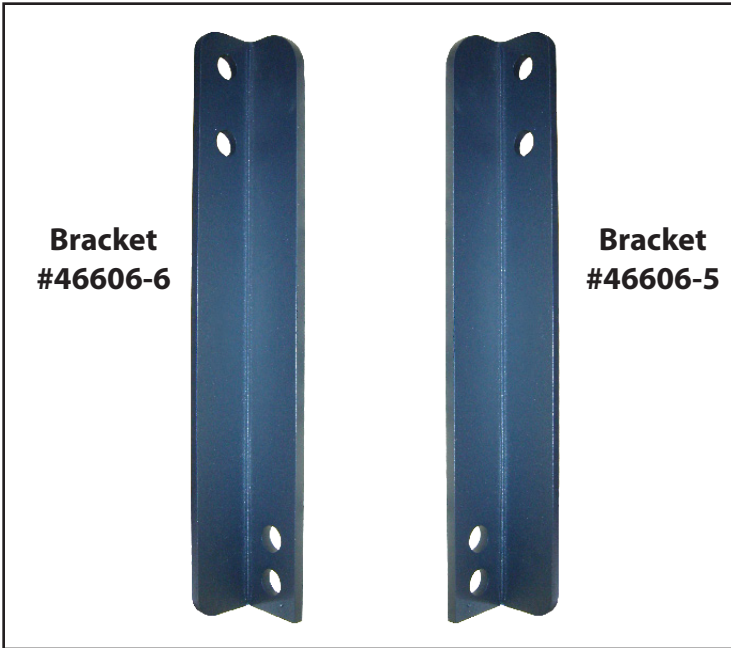


Diagram 2

Brackets #46606-7 & #46606-8

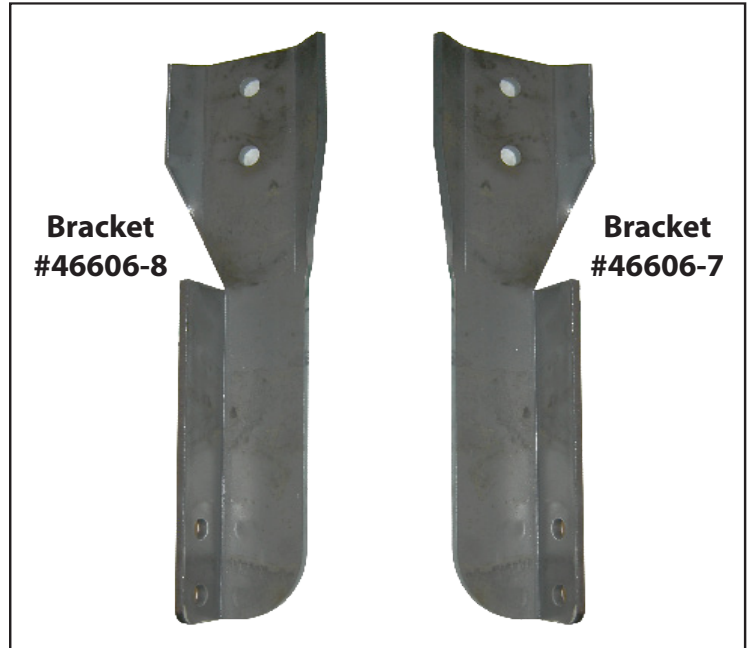


Diagram 3

Brackets #46606-9 & #46606-10



Diagram 4

Front View of Driver Side Bracket #46606-5 Installed

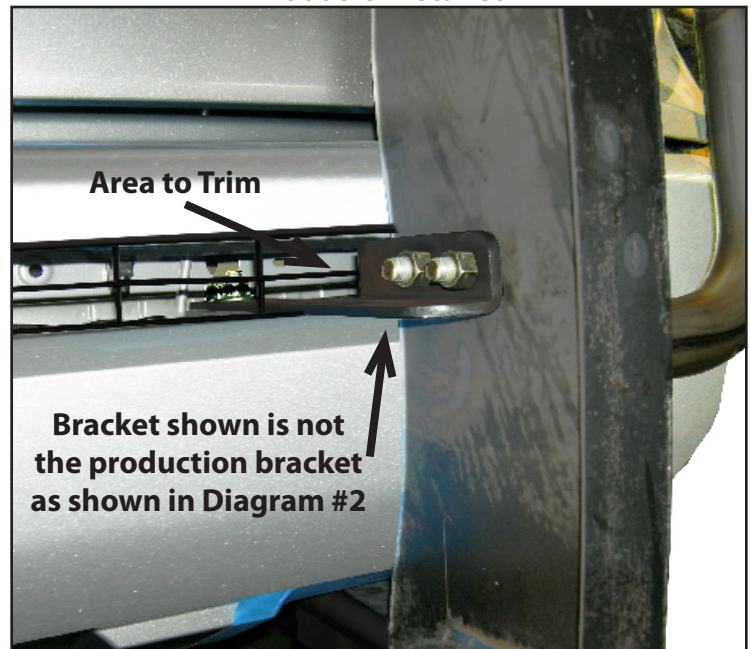


Diagram 5

Rancher Grille Guard

Installation Instructions

44606 / 46606

Toyota Tundra
2014 - 2015

**Lower Front View of Passenger Side Bracket
#46606-8 Installed**



Diagram 6

**Underside Front View of Passenger Side Bracket
#46606-8 Installed**

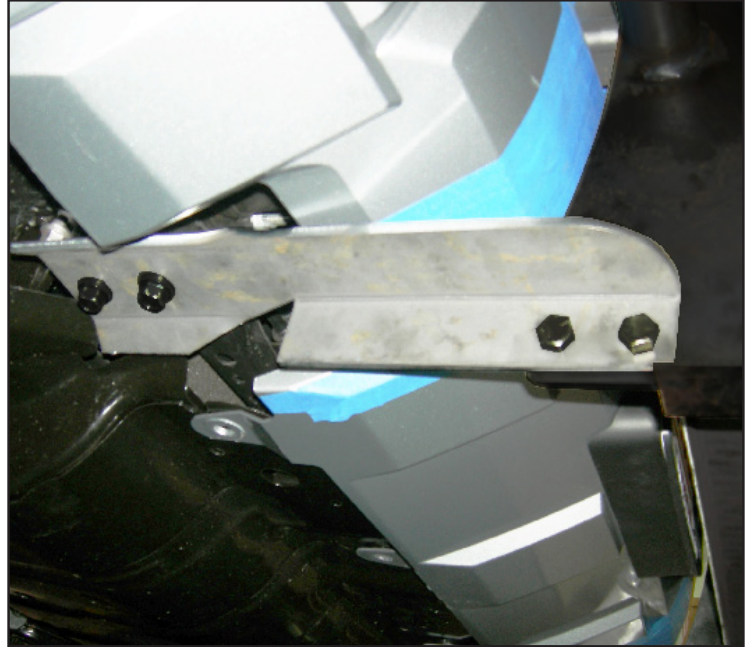


Diagram 7