

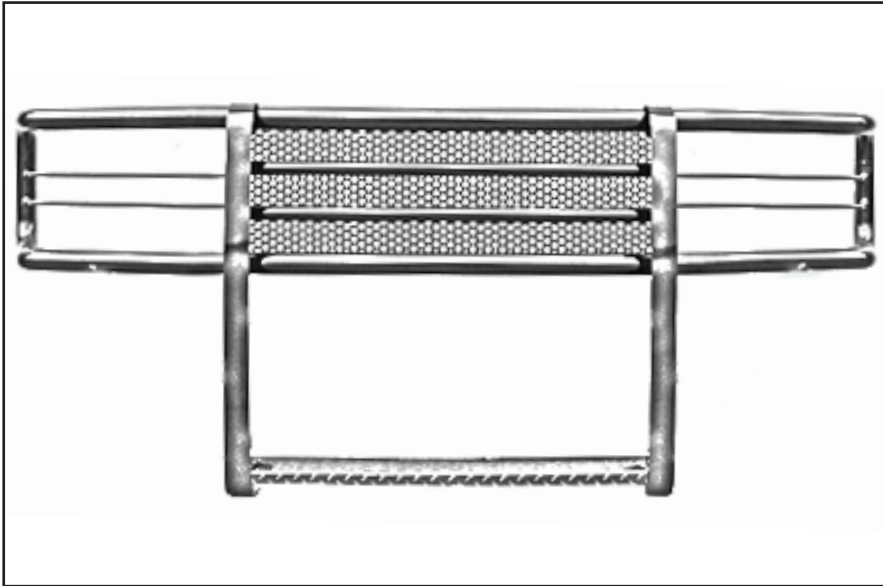
# Rancher Grille Guard

Installation Instructions

**44752 / 46752**

Chevy Silverado 2500/3500

2015 - 2017



**Parts List:**

- 1 - Rancher Grille Guard
- 1 - Driver Side Bracket #46754-17
- 1 - Pass. Side Bracket #46754-18
- 2 - Washer Plates #46754-9
- 2 - Nut Plates #46754-11
- 16 - 1/2"x 1 1/2" Bolts
- 28 - 1/2" Flat Washers
- 4 - 1/2" Lock Washers
- 12 - 1/2" Nylon Lock Nuts

\*May include extra hardware.

**Note: Completely read instructions before beginning installation!**

**Grille Guard Will Interfere with Front Parking Sensors.**

1. Remove the contents from the box and check for missing pieces or damage. If parts are missing or damaged, contact the original place of purchase.
2. Remove the two factory bolts that attach the tow hooks to the frame and the tow hooks, on both the driver and passenger side. The bolts and tow hooks will not be reused.
3. Place driver side bracket #46754-17, shown in **Diagram 1**, through the tow hook bumper opening and inside of the frame; aligning the holes on the bracket with the holes in the frame. This is shown in **Diagram 4**.
4. Place (1) 1/2" flat washer onto (2) 1/2" x 1 1/2" bolts and place the bolts with washers through the horizontal holes in the bracket and the frame. The bolts need to be inserted from the inside of the frame outward, so the threaded part exits the frame. Place (1) 1/2" flat washer and (1) 1/2" nylon lock nut onto the bolts as shown in **Diagram 4**. Do not tighten at this time.
5. Place (1) nut plate #46754-11, shown in **Diagram 3**, into the frame and lay it on top of the bracket. Align the two holes in the nut plate with the two holes in the bottom of the bracket and frame. Place (1) 1/2" lock washer and (1) 1/2" flat washer onto (2) 1/2" x 1 1/2" bolts. Hold (1) washer plate #46754-9, shown in **Diagram 2**, up to the bottom of the frame. Align the two holes in the washer plate with the two holes in the frame, bracket and nut plate. Place (1) bolt with washers into each of the two holes, threading them into the nut plate on the inside of the frame. Assistance may be needed to hold the nut plate in place while starting the thread of the bolts into the nuts. Do not fully tighten the bolts at this time.
6. Repeat steps 3, 4, and 5 for the passenger side bracket #46754-18, which is shown in **Diagram 1**.
7. Use two people to hold grille guard up to mounting brackets, aligning all eight bracket to grille guard mounting holes. The brackets will attach to the inside face of the grille guard uprights as shown in **Diagram 5**. Place (1) 1/2" flat washer onto (8) 1/2" x 1 1/2" bolts and insert through the bracket to guard mounting holes. Place (1) 1/2" flat washer and (1) 1/2" nylon lock nut onto the bolts.
8. With all the bolts installed align the grille guard on the truck and tighten all hardware.

# Rancher Grille Guard

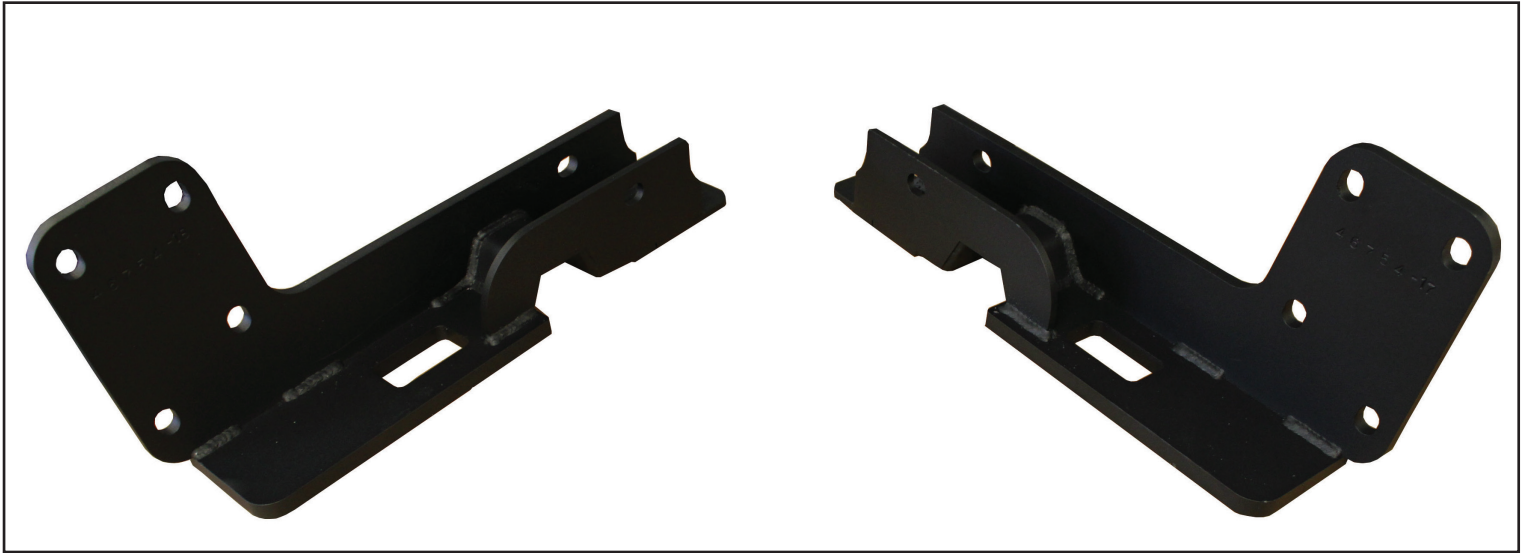
Installation Instructions

**44752 / 46752**

Chevy Silverado 2500/3500

2015 - 2017

## Brackets #46754-17 & #46754-18



**Bracket #46754-18**

**Bracket #46754-17**

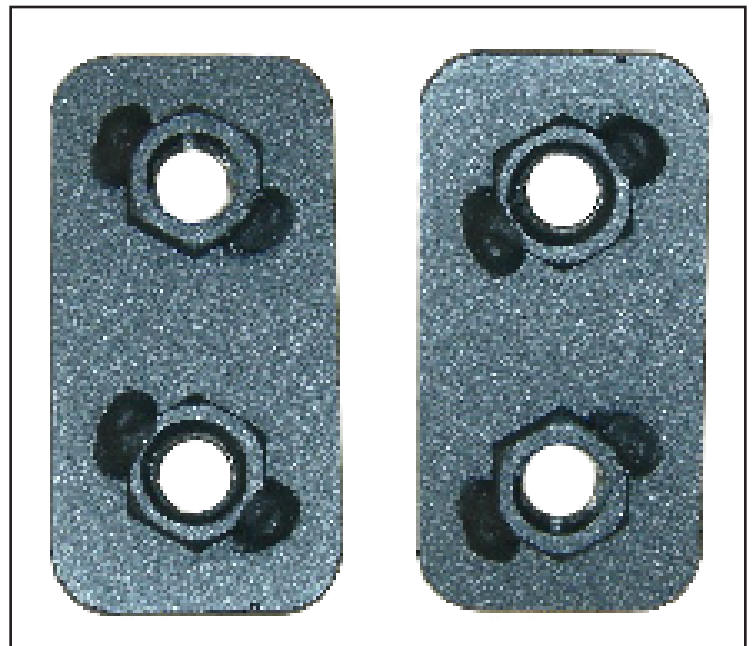
**Diagram 1**

## Washer Plates #46754-9



**Diagram 2**

## Nut Plates #46754-11



**Diagram 3**

## Rancher Grille Guard

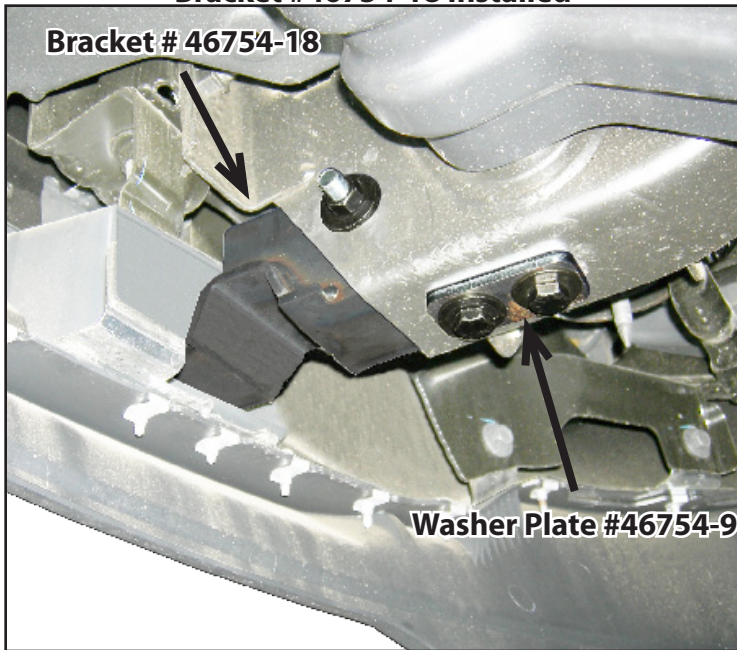
Installation Instructions

**44752 / 46752**

Chevy Silverado 2500/3500

2015 - 2017

**Lower Behind Bumper View of Passenger Side  
Bracket #46754-18 Installed**



**Diagram 4**

**Front View Of Drivers Side Bracket #46754-17  
Installed with Grille Guard**



**Diagram 5**