



INSTRUCTIONS—INSTRUCCIONES—CONSIGNES

APPLICATION: 2009-13 DODGE RAM 1500

PART # 57-3540, 57-3545

HDX GRILLE GUARD

SIGNATURE OF QUALITY

AUTOMOTIVE PRODUCTS, INC.

ITEM	QUANTITY	DESCRIPTION	TOOLS NEEDED
1	1	GRILLE GUARD	18MM SOCKET
2,3	2	LOWER MOUNTING BRACKET 2(DRIVERS SIDE), 3 (PASSENGER SIDE)	18MM WRENCH
4,5	2	FRAME MOUNTING BRACKET 4(DRIVERS SIDE), 5 (PASSENGER SIDE)	16MM SOCKET
6	2	SUPPORT STRAP	16MM WRENCH
7	6	M12 x 35MM BUTTON HEAD BOLTS (STAINLESS)	10MM SOCKET
8	14	M12 FLAT WASHERS (STAINLESS)	FLAT HEAD SCREWDRIVER
9	6	M12 LOCK WASHERS (STAINLESS)	HAMMER
10	6	M12 HEX NUT (STAINLESS)	TORQUE WRENCH
11	2	M12 X 140 HEX BOLT	UTILITY KNIFE
12	2	M12 LARGE FLAT WASHER	
13	2	M12 X 30 HEX BOLT	
14	4	M12 HEX NUT	
15	6	M12 FLAT WASHER	
16	4	M12 LOCK WASHER	
17	2	M12 X 60 HEX BOLT	

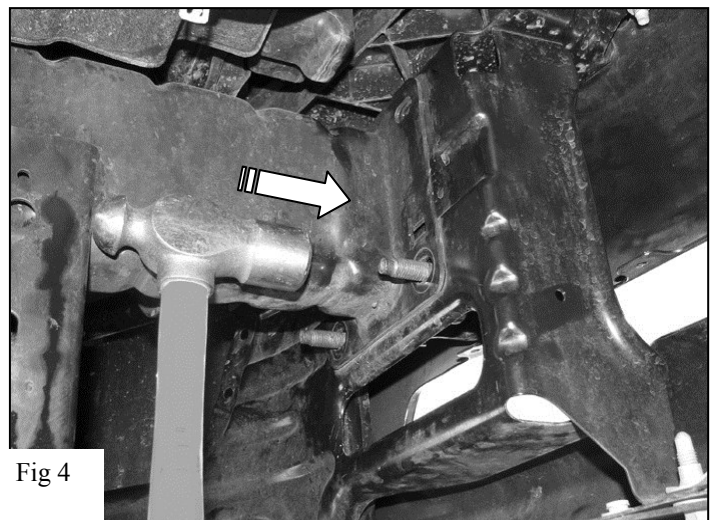
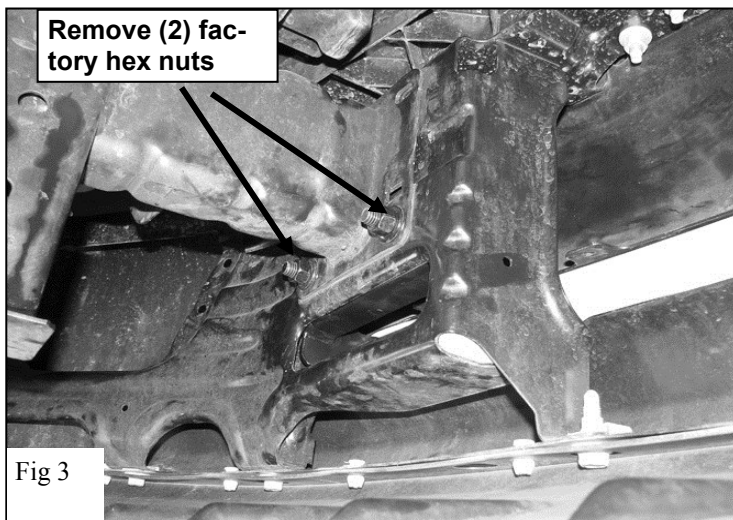
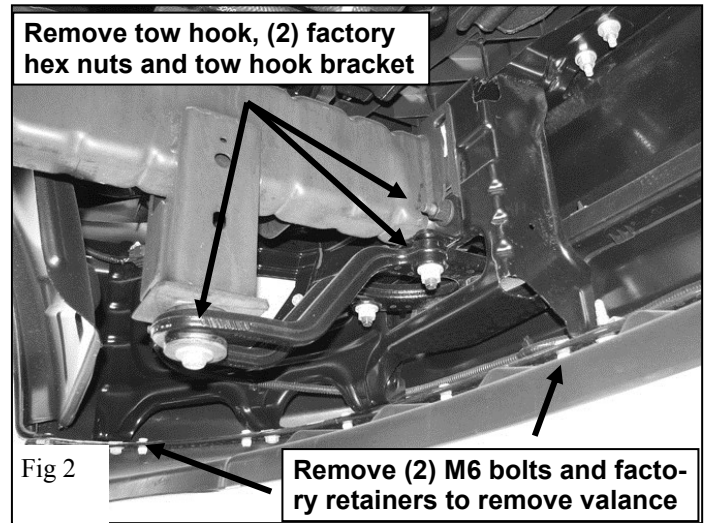
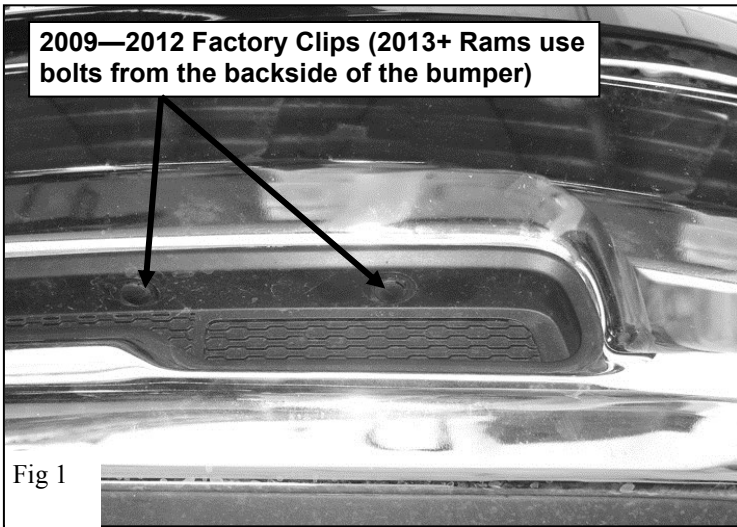
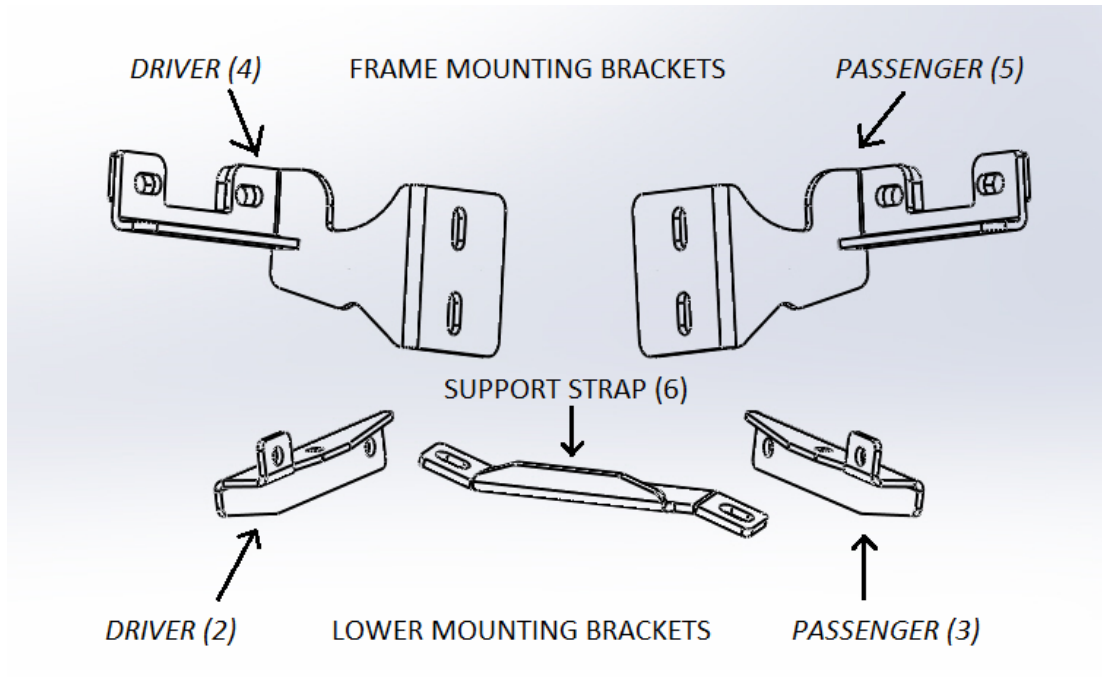
USE ANTI-SEIZE THREAD LUBRICANT ON ALL STAINLESS HARDWARE TO PREVENT THREAD GALLING

1. Remove contents from box, verify all parts listed are present and free from damage. Carefully read and understand all instructions before attempting installation.
2. Remove the lower bumper front valance by removing the two M6 bolts at the ends and prying out the center pins of the plastic retaining clips with a flat head screwdriver (Figure 2).
3. On vehicles without factory tow hooks: For 2009—2012 vehicles, remove the plastic fill panel on the front bumper by removing the 2-piece plastic clips at the top of the panel, (Figure 1). NOTE: Use a flat-blade screwdriver to first pop the center pin out to release the clip. For 2013+ vehicles remove the two plastic bumper inserts that are attached with (4) M6 fasteners from the inside of the bumper. Next, from behind the driver side of the front bumper, remove the (2) hex nuts on the bottom of the bumper bracket securing the bumper to the frame, (Figure 3). On vehicles with factory tow hooks: Start the installation on the driver side, behind the front bumper. Remove the factory tow hook, (Figure 2). Remove the two hex nuts on the bottom of the bumper bracket securing the 2-bolt tow hook mounting bracket to the frame.
4. Drive the (2) carriage bolts in the bumper bracket out of the bracket by striking the end of the bolts with a hammer, (Figure 4). Discard the tin retaining washers. Insert the driver side Mounting Bracket into the opening in the front of the bumper and line up the (2) mounting holes with the holes in the bumper bracket. For vehicles without tow hooks re-use the factory carriage bolts and nuts to secure these brackets. For vehicles with tow hooks they must be replaced with the supplied (2) M12 x 60mm Hex Bolts and (2) M12 Flat Washers through the driver side Frame Mounting Bracket and bumper bracket (the factory nuts will be re-used) (Figure 5). Re-install the factory tow hook before attaching the nuts. Attach all hardware loosely.
5. Remove the factory M10 flange bolt from the bottom of the bumper located beneath the area of the tow hook pocket. Use the factory bolt to loosely attach the lower mounting bracket (Figure 6).
6. Use (1) M12x140 Hex Bolt, (1) M12 Large Flat Washer, (1) M12 Lock Washer, and (1) M12 Hex Nut to loosely attach the Support Strap to the side of the frame tower. The M12 Large Flat Washer should be placed on the side of the tower opposite the support strap (Figures 7 & 8).
7. Repeat Steps 2– 5 for passenger side Mounting Bracket installation.
8. With assistance, position the Grille Guard up to the Frame Mounting Brackets and the Lower Mounting Brackets. Use the included (4) M12 Button Head Bolts, (8) M12 Flat Washers, (4) M12 Lock Washers and (4) M12 Hex Nuts to loosely attach the Grille Guard to the Frame Mounting Brackets, (Figure 9).
9. Align the holes and loosely attach the Grille Guard to the Bottom Mounting Brackets using (2) M12 Button Head Bolts, (4) M12 Flat Washers, (2) M12 Lock Washers and (2) M12 Hex Nuts, (Figure 9).
10. With assistance, align and adjust the Grille Guard and tighten all hardware, including the tow hook hardware. On vehicles without factory tow hooks: The plastic fill panel in the front bumper removed in Step 3 may be discarded or can be reinstalled but will require trimming to clear the Frame Mounting Brackets. Once modified, use the factory hardware to re-install (on 2013+ vehicles only (2) of the (4) bolts may be re-used).
11. Trim the lower valance to fit around the lower mounting brackets and re-install using factory hardware.



Westin Automotive Products, Inc.
320 W. Covina Blvd.
San Dimas, CA 91773

Thank You for choosing Westin products
For additional installation assistance please call
Customer Service (800) 793-7846



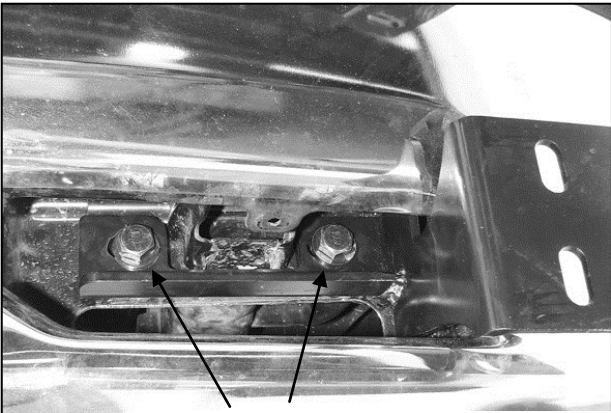


Fig 5

Attach Frame Bracket (Use factory carriage bolts for vehicles without tow hooks. Driver Side Shown.)

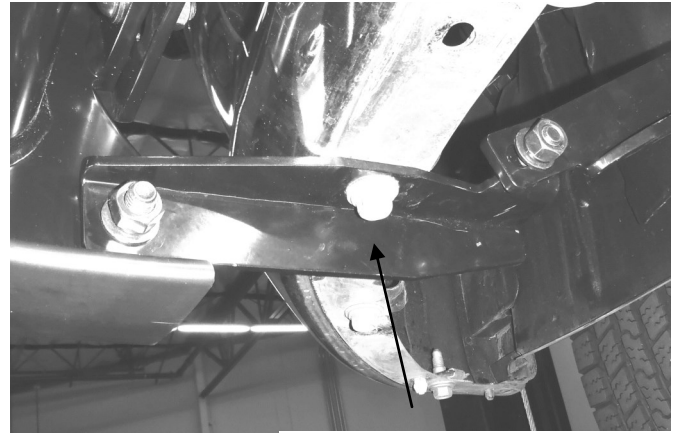


Fig 6

Attach Lower Mount Bracket to Bumper Bolt (Pass Side Shown)

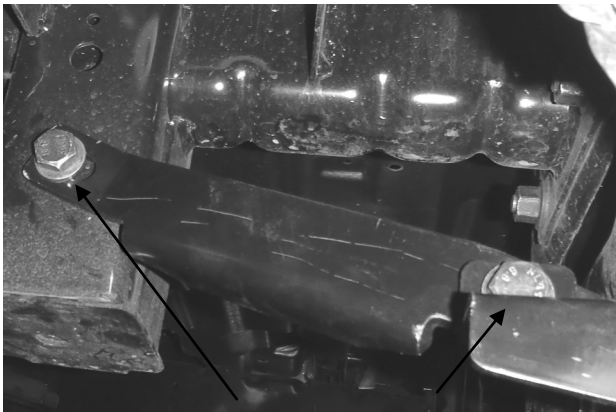


Fig 7

Attach Support Strap to frame tower and Lower Mount Bracket (Pass Side Shown)

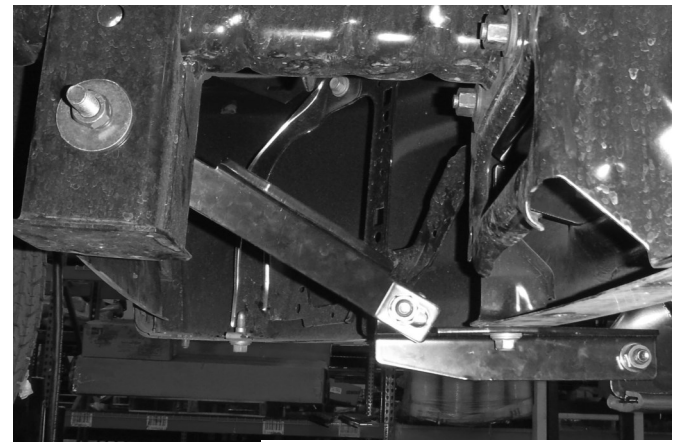


Fig 8

Lower Bracket and Support Strap Configuration (Driver Side Shown)

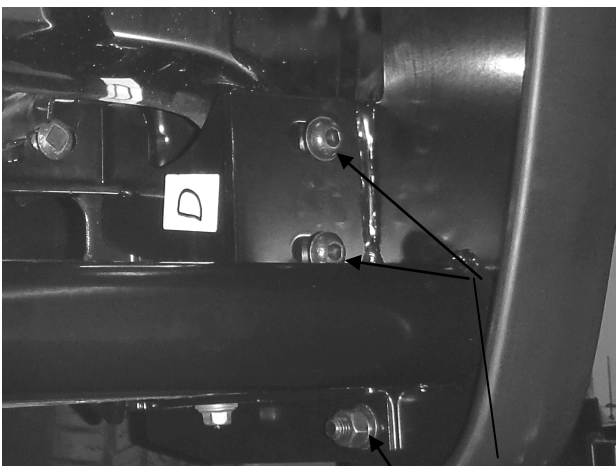


Fig 9

Attach Grille Guard to Frame Bracket & Lower Bracket (Driver Side Shown)



Installation Complete (Shown with Optional Lights)