



AUTOMOTIVE PRODUCTS, INC.

INSTRUCTIONS—INSTRUCCIONES—CONSIGNES

APPLICATION: 2007-10 CHEVY SILVERADO 2500/3500 HD
APP PART # 57-2310, 57-2315
HDX GRILLE GUARD

ITEM	QUANTITY	DESCRIPTION	TOOLS NEEDED
1	1	GRILLE GUARD	18MM SOCKET
2,3	2	TOP MOUNTING BRACKETS (2) DRIVERS SIDE, (3) PASSENGER SIDE	16MM SOCKET
4,5	2	LOWER MOUNTING BRACKET, (4) DRIVERS SIDER, (5) PASSENGER SIDE	RATCHET
6	4	M12 X 40MM HEX HEAD BOLTS	TORQUE WRENCH
7	2	M12 X 24MM OD FLAT WASHERS	
8	6	M12 X 37MM OD FLAT WASHERS	
9	4	M12 LOCK WASHERS	
10	4	M12 HEX NUTS	
11	2	M10 X 35MM HEX HEAD BOLTS	
12	2	M10 FLAT WASHERS	
13	2	M10 SPRING LOCK WASHERS	
14	6	M12 X 40MM HEX HEAD BOLTS (STAINLESS STEEL)	
15	6	M12 LOCK WASHERS (STAINLESS STEEL)	
16	12	M12 FLAT WASHERS (STAINLESS STEEL)	
17	6	M12 HEX NUTS (STAINLESS STEEL)	
18	2	RUBBERIZED FOAM TAPE	

1. Remove contents from box, verify if all parts listed are present and free from damage. Carefully read and understand all instructions before attempting installation. Anti seize lubricant must be used on all stainless steel fasteners to prevent them from galling.
2. Starting from the front of the vehicle; remove tow hooks if equipped and set aside.
3. The lower plastic valance must be trimmed to allow clearance of the lower mounting brackets trim as shown. Fig 1
4. Take the drivers side lower mounting bracket and attach to the frame using (2) M12 x 40mm hex head bolts, (1) M12 x 24mm od flat washer, (3) M12 x 37mm od flat washer, (2) M12 lock washer, and (2) M12 hex nuts Fig 2. NOTE: if the vehicle is equipped with tow hooks reinstall tow hooks at this time and use the factory tow hook hardware to attach the lower mounting bracket Fig 3. Do not fully tighten at this time
5. Repeat step 4 for passenger side Fig 2.
6. Remove the grille shell from the vehicle and set aside Fig 4 . Locate the drivers side factory bumper bolt Fig 5 and remove it, the remove the top outside bumper bracket bolt. Attach the drivers side top mounting bracket using the factory bumper bolt and (1) M10 hex head bolt, (1) M10 lock washer, and (1) M10 flat washer. Fig 6 NOTE: before fully installing the top mounting bracket place a strip of rubberized foam on the bottom of the bracket where it may contact the bumper to prevent it from scratching Fig 7.
7. Repeat step 6 for passenger side.



Westing Automotive Products, Inc.
5200 N. Irwindale Ave. Suite 220
Irwindale, Ca. 91706

11/8/2011

P.N.: 75-0020-RevB

ECO #: W11-0050

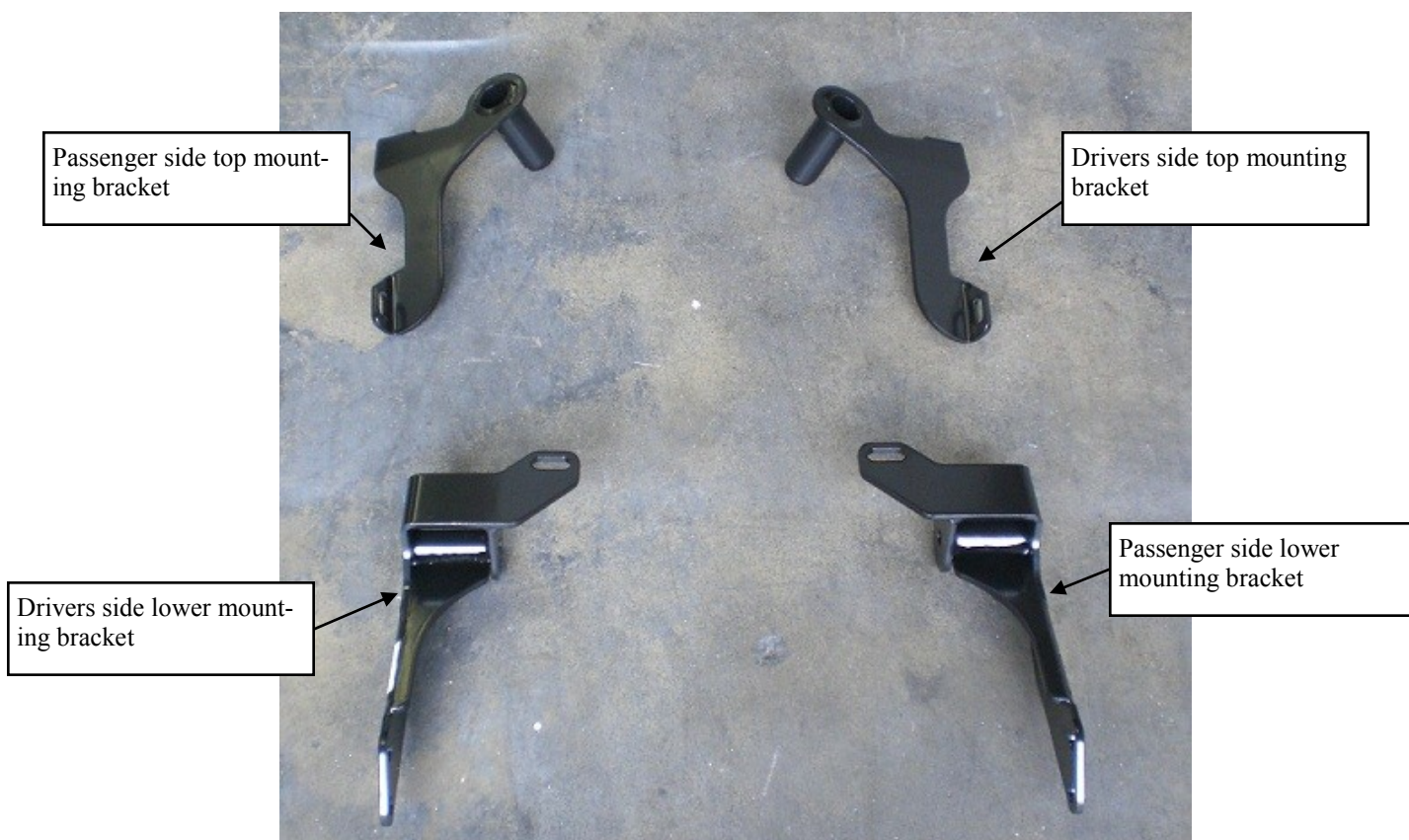
PG-1

Thank You for choosing Westin products
For Additional installation assistance please call
Customer service (800) 793-7846
www.westinautomotive.com

8. Once the top mounting brackets are attached re install the grille shell; again place strips of rubberized foam were the top mounting brackets may contact the grille shell to prevent it from scratching. NOTE: the bumper bracket bolts may need to be loosened to adjust the bumper lower to allow enough clearance for the top mounting brackets to fit between the bumper and grille.
9. With assistance take the grille guard and align it with the previously installed mounting brackets, attach the grille guard to the lower mounting brackets using (4) M12 hex head bolts (stainless steel), (8) M12 flat washers (stainless steel), (4) M12 lock washers (stainless steel), and (4) M12 hex nuts (stainless steel) Fig 8. Attach the grille guard to the top mounting brackets using (2) M12 hex head bolts (stainless steel), (4) M12 flat washers (stainless steel), (2) M12 lock washers (stainless steel), and (2) M12 hex nuts, (stainless steel). Do not fully tighten at this time.
10. Align and adjust the grill guard as needed then tighten all hardware at this time. Torque all M12 fasteners to 50-55 ft lbs, M10 to 35-40 ft lbs, and M12 stainless steel to 25-30 ft lbs.

CARE INSTRUCTIONS

- REGULAR WAXING IS RECOMMENDED. DO NOT USE ANY TYPE OF POLISH OR WAX THAT MAY CONTAIN ABRASIVES
- STAINLESS STEEL PRODUCTS CAN BE CLEANED WITH MILD SOAP AND WATER. STAINLESS STEEL POLISH SHOULD BE USED TO POLISH SMALL SCRATCHES.
- GLOSS BLACK FINISHES SHOULD BE CLEANED WITH MILD SOAP AND WATER



Westing Automotive Products, Inc.
5200 N. Irwindale Ave. Suite 220
Irwindale, Ca. 91706

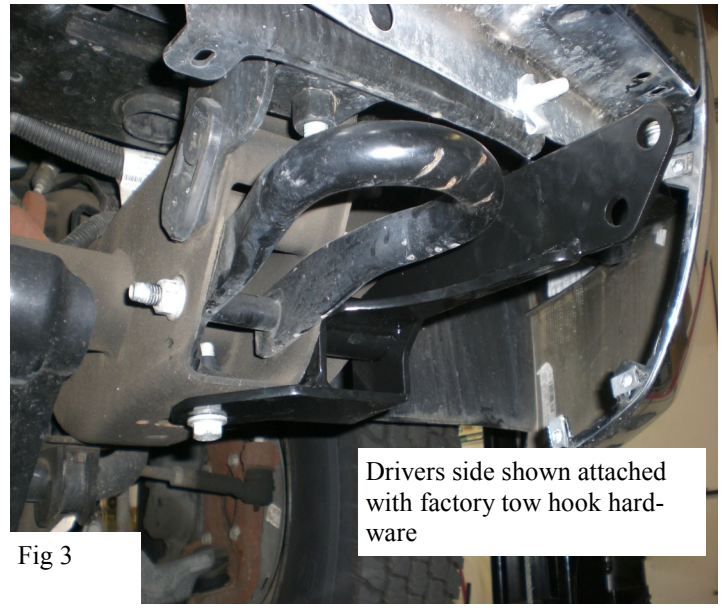
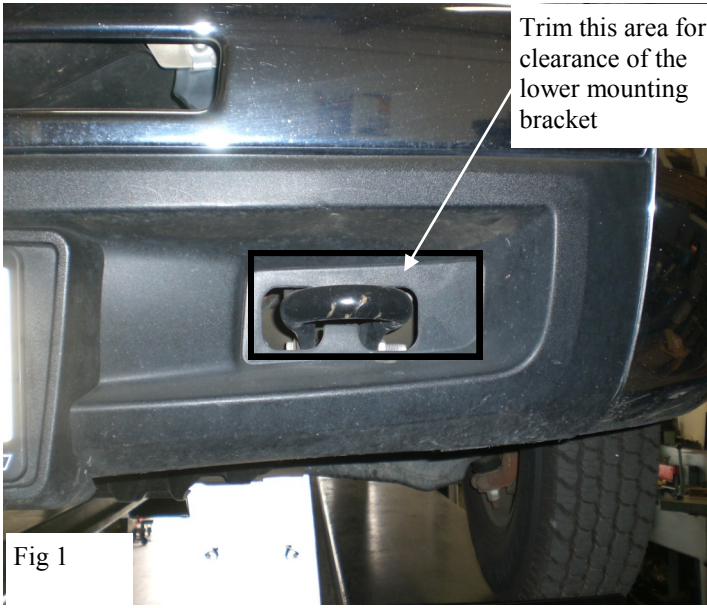
11/8/2011

P.N.: 75-0020-RevB

ECO #: W11-0050

PG-2

Thank You for choosing Westin products
For Additional installation assistance please call
Customer service (800) 793-7846
www.westinautomotive.com



Westing Automotive Products, Inc.
 5200 N. Irwindale Ave. Suite 220
 Irwindale, Ca. 91706

11/8/2011

P.N.: 75-0020-RevB

ECO #: W11-0050

PG-3

Thank You for choosing Westin products
 For Additional installation assistance please call
 Customer service (800) 793-7846
www.westinautomotive.com

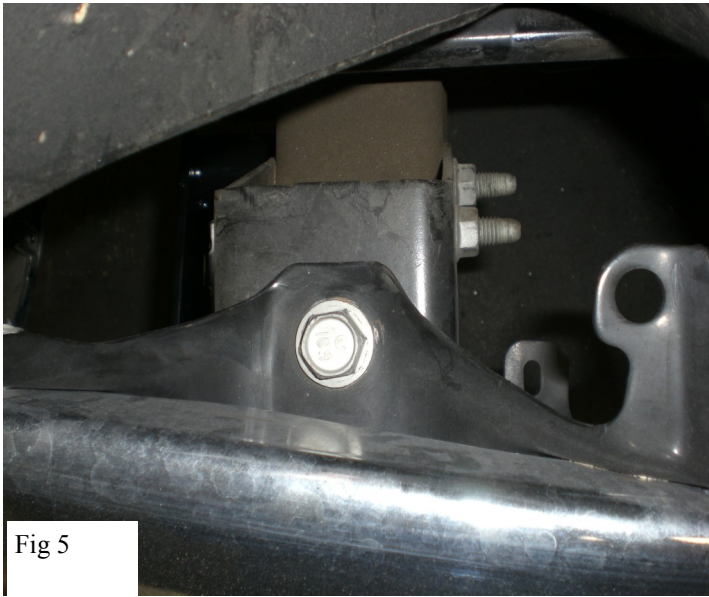


Fig 5



Fig 8

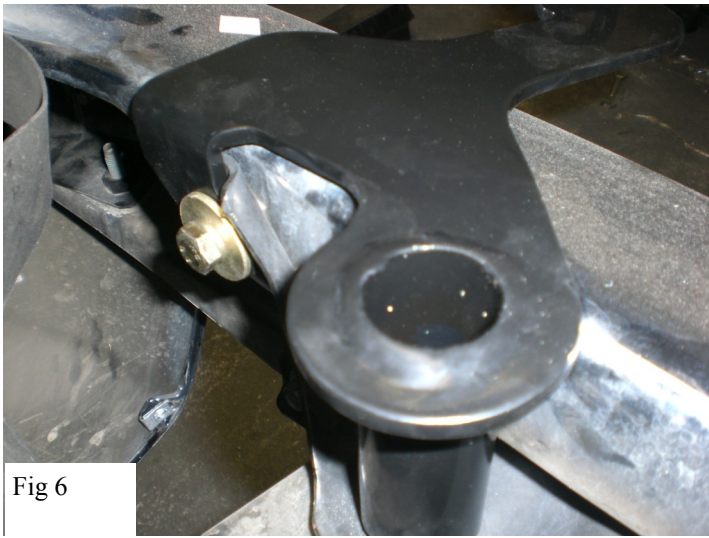


Fig 6



Fig 9



Fig 7



Installation complete

Westin.
SIGNATURE OF QUALITY

Westing Automotive Products, Inc.
5200 N. Irwindale Ave. Suite 220
Irwindale, Ca. 91706

11/8/2011

P.N.: 75-0020-RevB

ECO #: W11-0050

PG-4

Thank You for choosing Westin products
For Additional installation assistance please call
Customer service (800) 793-7846
www.westinautomotive.com