



INSTRUCTIONS—INSTRUCCIONES—CONSIGNES

APPLICATION: 2011 JEEP GRAND CHEROKEE/DODGE DURANGO

APP PART # 22-1985

OVAL MOUNT KIT

AUTOMOTIVE PRODUCTS, INC.

ITEM	QUANTITY	DESCRIPTION	TOOLS NEEDED
1	2	STEP BARS	16MM SOCKET
2,3	2	FRONT MOUNTING BRACKETS	13MM SOCKET
3,4	2	REAR MOUNTIONG BRACKETS	10MM SOCKET
5	8	M8 HEX HEAD BOLTS	TORQUE WRENCH
6	16	M8 FLAT WASHERS	RATCHET
7	8	M8 INTERNAL TOOTH LOCK WASHERS	
8	8	M8 HEX NUTS	
9	2	M10 J BOLTS	
10	2	M10 HEX HEAD BOLTS	
11	4	M10 FLAT WASHERS	
12	4	M10 SPLIT LOCK WASHERS	
13	2	M10 HEX NUTS	
14	4	M6 BOLT PLATES (INCLUDED WITH STEP TUBES)	
15	16	M6 FLAT WASHERS (INCLUDED WITH STEP TUBES)	
16	16	M6 NYLOCK NUTS (INCLUDED WITH STEP TUBES)	

1. Remove contents from box and check for damage. Verify that all parts listed above are present. Carefully read all installation instructions before installing.
2. Starting from the front drivers side of the vehicle Install J-Bolt in the large hole in the frame . (fig 1, 2)
Note: The Jeep Grand Cherokee requires pinch weld holes used for installation to be drilled out to 3/8". Dodge Durango requires pinch weld holes used for installation to be drilled out to 3/8" and one additional hole to be drilled through the pinch weld in the rear of the vehicle. (FIG 6)
3. Install front bracket to the J-Bolt using (1) 30mm flat washer, (1) M10 split lock washer and (1) M10 hex nut. Secure the front bracket to the outside of the pinch weld using (2) M8 hex head bolts, (4) M8 flat washers, (2) M8 internal tooth lock washers and (2) M8 hex nuts. Do not tighten fully at this time. (fig 3,4)
4. Remove the M10 fuel tank strap bolt and install the rear bracket using (1) M10 hex head bolt, (1) M10 flat washer and (1) M10 split lock washer. Secure the rear bracket to the outside of the pinch weld using (2) M8 hex head bolts, (4) M8 flat washers, (2) M8 internal tooth lock washers and (2) M8 hex nuts. Do not tighten fully at this time. (FIG 5,6)
- 5 Install the drivers side step bar with the M6 hardware as shown in (FIG 7,8,9)
6. Repeat steps 2-5 for the passenger side.
7. Tighten all fasteners at this time. Torque all M10 fasteners to 35-40 ft lbs, and M8 to 30-35 ft lbs, and M6 to 25 ft lbs

CARE INSTRUCTIONS

- REGULAR WAXING IS RECOMMENDED. DO NOT USE ANY TYPE OF POLISH OR WAX THAT MAY CONTAIN ABRASIVES
- STAINLESS STEEL PRODUCTS CAN BE CLEANED WITH MILD SOAP AND WATER. STAINLESS STEEL POLISH SHOULD BE USED TO POLISH SMALL SCRATCHES.
- GLOSS BLACK FINISHES SHOULD BE CLEANED WITH MILD SOAP AND WATER



Westing Automotive Products, Inc.
5200 N. Irwindale Ave. Suite 220
Irwindale, Ca. 91706

Thank You for choosing Westin products
For Additional installation assistance please call
Customer service (800) 793-7846
www.westinautomotive.com

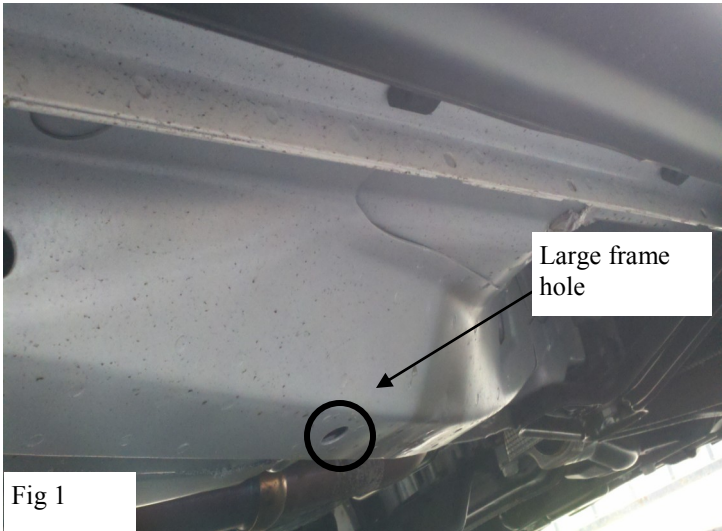


Fig 1

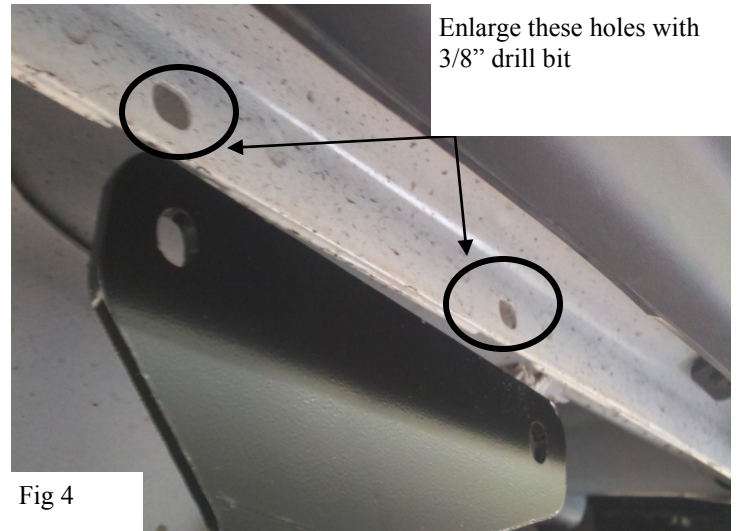


Fig 4

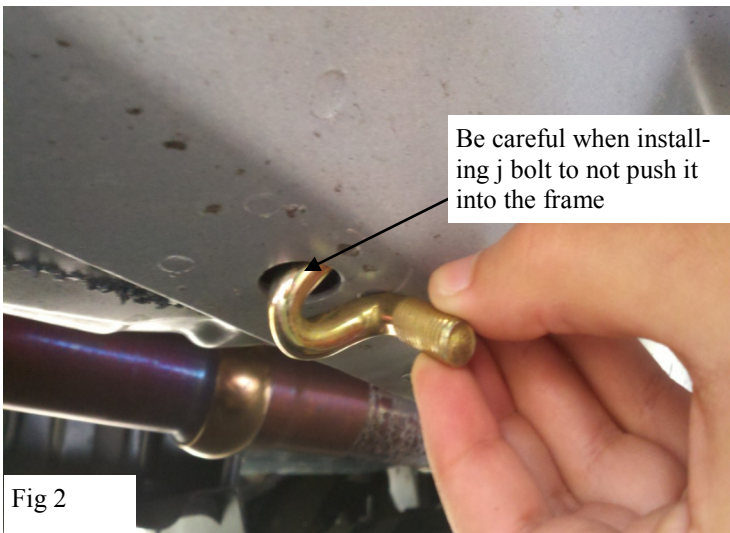


Fig 2



Fig 5



Fig 3

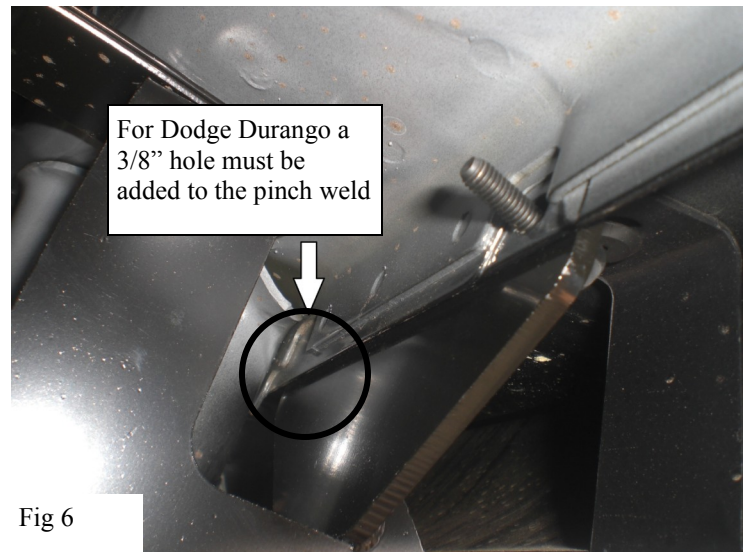


Fig 6



Westing Automotive Products, Inc.
5200 N. Irwindale Ave. Suite 220
Irwindale, Ca. 91706

8/5/2011 P.N.: 75-0033-RevA

PG-2

Thank You for choosing Westin products
For Additional installation assistance please call
Customer service (800) 793-7846
www.westinautomotive.com

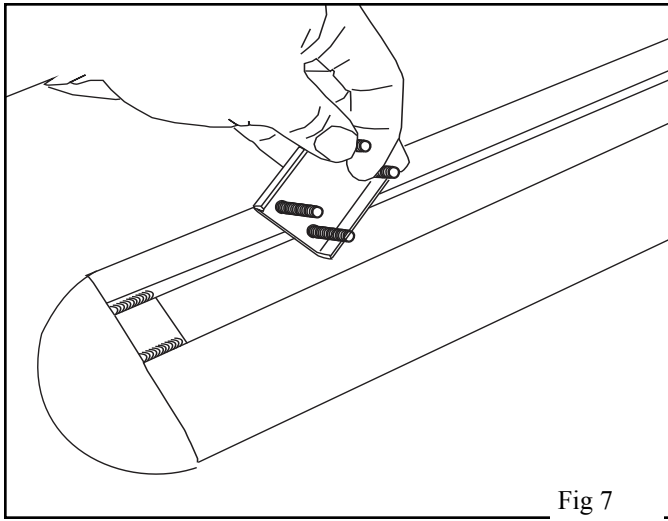


Fig 7

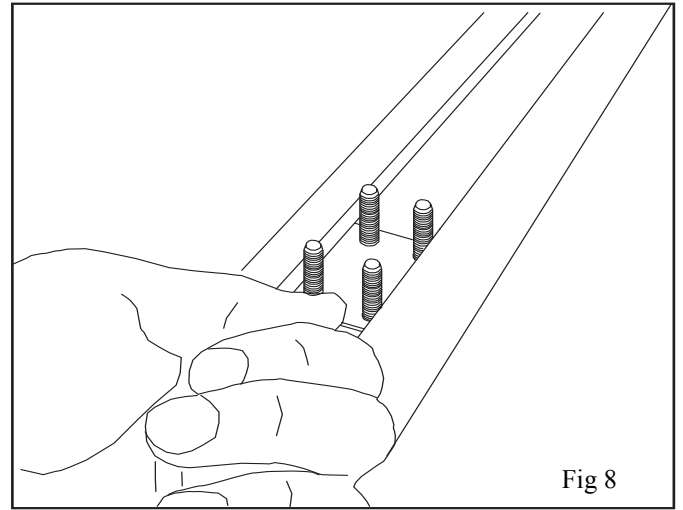


Fig 8

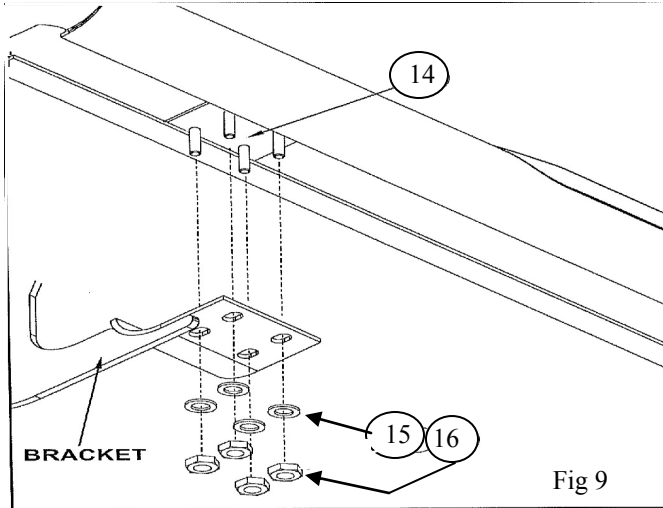
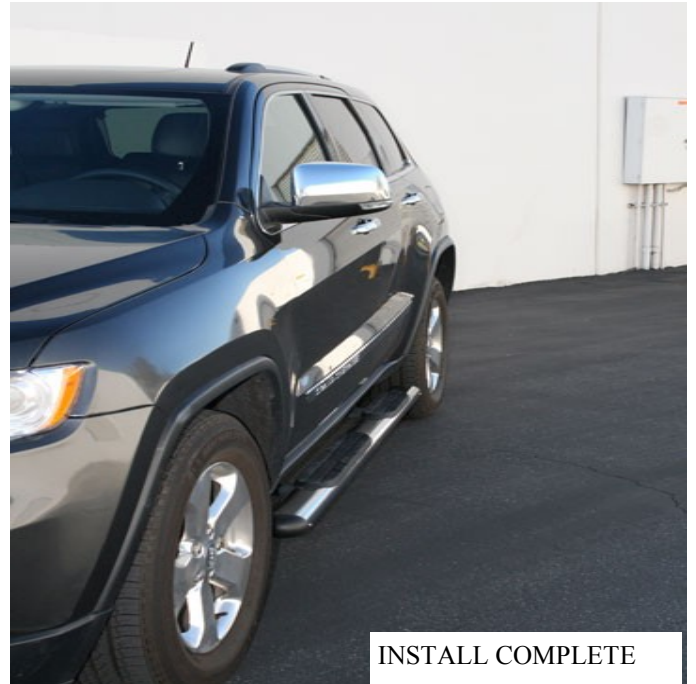


Fig 9



INSTALL COMPLETE



Westing Automotive Products, Inc.
5200 N. Irwindale Ave. Suite 220
Irwindale, Ca. 91706

8/5/2011 P.N.: 75-0033-RevA

Thank You for choosing Westin products
For Additional installation assistance please call
Customer service (800) 793-7846
www.westinautomotive.com