

INSTALLATION INSTRUCTIONS

PLATINUM 4 OVAL NERF STEP BARS

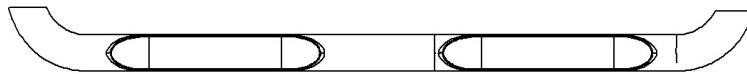


APPLICATION:
2020 Jeep Gladiator
PART NUMBER:
21-4165

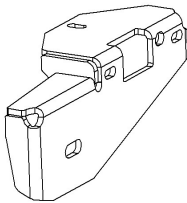
| CONTENT | | | |
|---------|----------|---|---------------|
| ITEM | QUANTITY | DESCRIPTION | TOOLS NEEDED |
| 1, 2 | 2 | STEP BAR ASSEMBLY (1 DRIVER SIDE, 1 PASSENGER SIDE) | 13 MM SOCKET |
| 3 | 1 | FRONT MOUNTING BRACKET (DRIVER SIDE) | 13 MM WRENCH |
| 4 | 1 | FRONT MOUNTING BRACKET (PASSENGER SIDE) | 3/4" SOCKET |
| 5 | 2 | CENTER MOUNTING BRACKETS | RATCHET |
| 6 | 1 | REAR MOUNTING BRACKET (DRIVER SIDE) | TORQUE WRENCH |
| 7 | 1 | REAR MOUNTING BRACKET (PASSENGER SIDE) | ALLEN WRENCH |
| 8 | 4 | 1/2" HEX HEAD CAP SCREW (YELLOW ZINC) | |
| 9 | 4 | 1/2" FLAT WASHER (YELLOW ZINC) | |
| 10 | 4 | 1/2" SPLIT LOCK WASHER (YELLOW ZINC) | |
| 11 | 8 | M8 HEX HEAD CAP SCREW (BLACK ZINC) | |
| 12 | 8 | M8 SERRATED FLANGE NUT (BLACK ZINC) | |
| 13 | 8 | M8 BUTTON HEAD SCREW (BLACK ZINC) | |
| 14 | 8 | M8 SPLIT LOCK WASHER (BLACK ZINC) | |
| 15 | 24 | M8 FLAT WASHER (BLACK ZINC) | |

ANTI-SEIZE LUBRICANT MUST BE USED ON ALL STAINLESS STEEL FASTENERS TO PREVENT THREAD DAMAGE AND GALLING

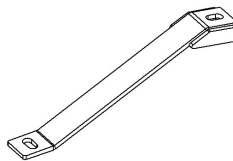
ITEM 1



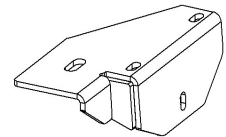
ITEM 3



ITEM 5



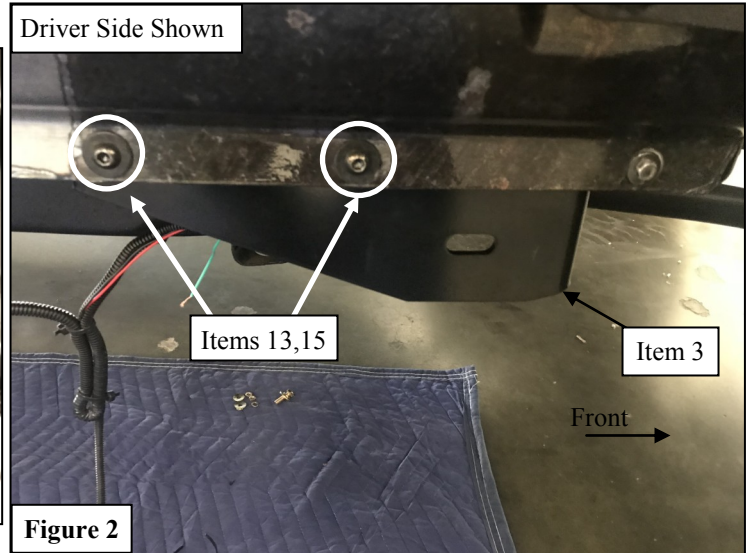
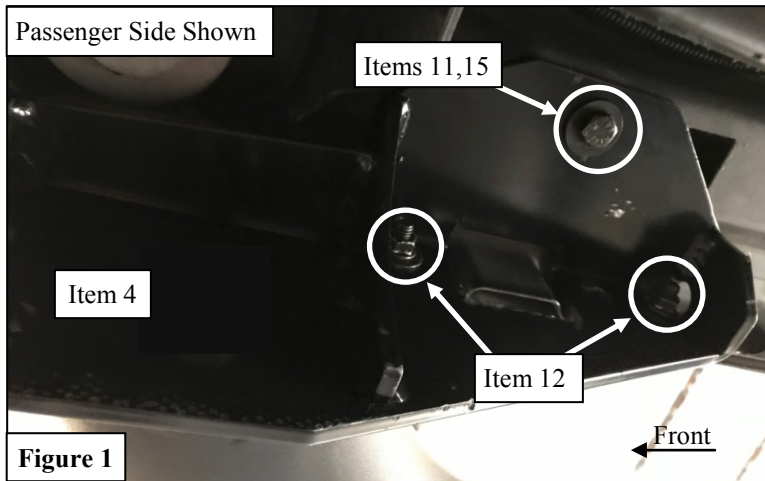
ITEM 7



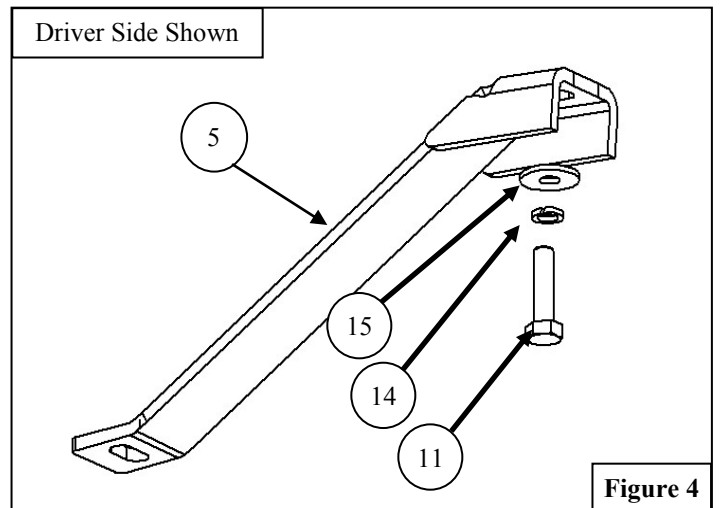
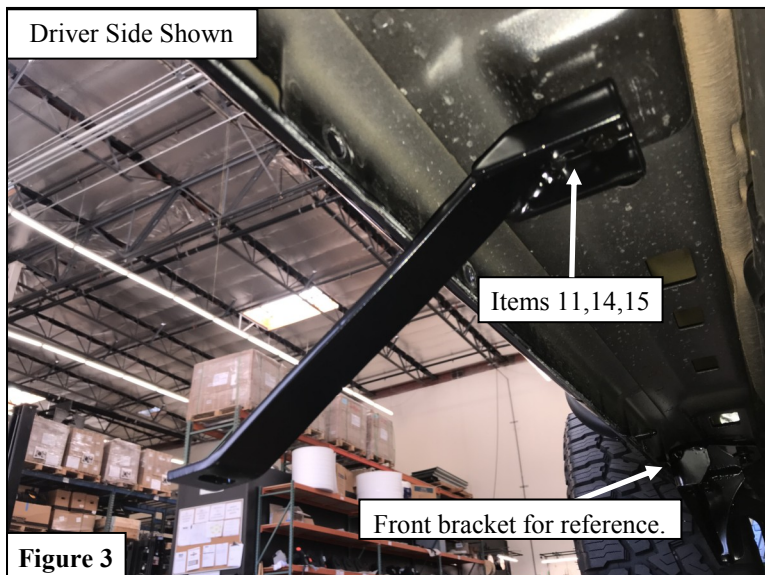
Note: Items shown are for the drivers side. Passenger side items are opposites to the images shown.

PROCEDURE

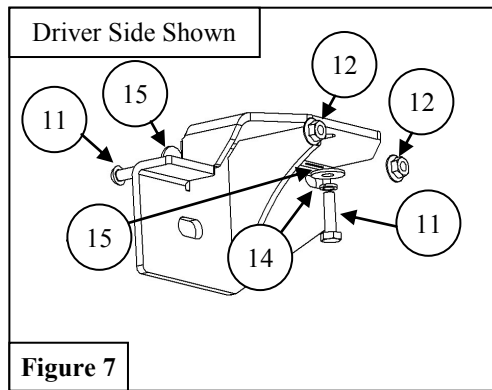
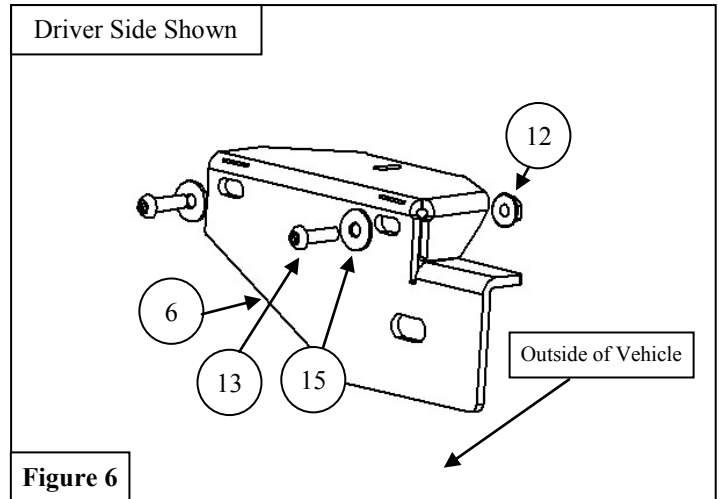
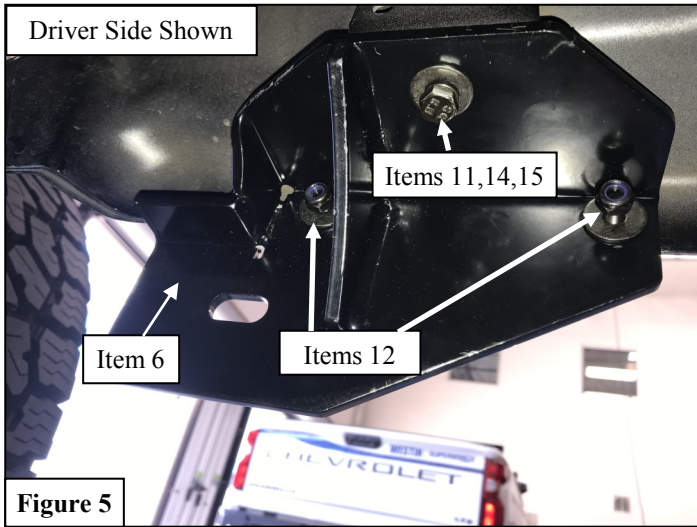
1. Remove contents from box, verify if all parts listed are present and free from damage. Carefully read and understand all instructions before attempting installation.
Failure to identify damage before installation could lead to a rejection of any claim.
2. Loosely attach the Front Mounting Bracket (3) to the vehicle's pinch weld and frame using the supplied M8 Hardware. See **Figures 1 & 2**. *Note: Be sure to install the nuts on the bracket side of the pinch weld.*



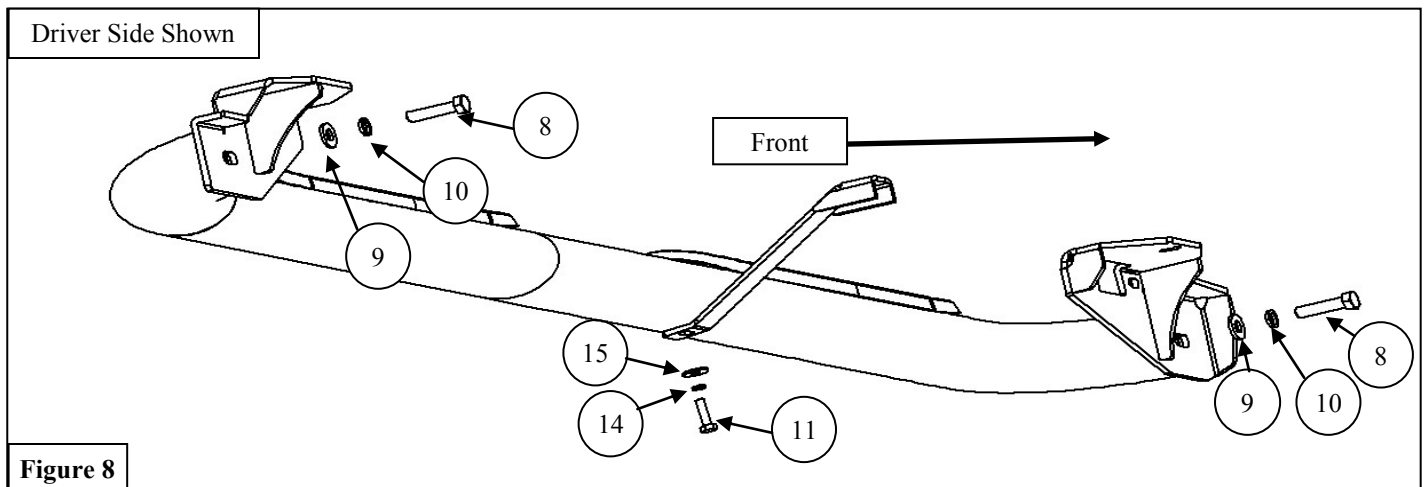
4. Loosely attach the Center Mounting Bracket (5) to the vehicle's pinch weld and frame using the supplied M8 Hardware. See **Figures 3 & 4**.
5. Repeat for passenger side.



- Loosely attach the Rear Mounting Bracket (7) to the vehicle's pinch weld and frame using the supplied M8 Hardware. See **Figures 5, 6, & 7.** *Note: Be sure to install the nuts on the bracket side of the pinch weld.*
- Repeat for passenger side.



- Align and adjust the step bars as needed. Tighten and torque all 1/2" hardware to 50 ft-lbs, and all M8 hardware to 18 ft-lbs. See **Figure 8** for exploded view of hardware.



COMPLETE INSTALLATION



CARE INSTRUCTIONS

- REGULAR WAXING IS RECOMMENDED. DO NOT USE ANY TYPE OF POLISH OR WAX THAT MAY CONTAIN ABRASIVES.
- STAINLESS STEEL PRODUCTS CAN BE CLEANED WITH MILD SOAP AND WATER. STAINLESS STEEL POLISH SHOULD BE USED TO POLISH SMALL SCRATCHES.
- GLOSS BLACK FINISHES SHOULD BE CLEANED WITH MILD SOAP AND WATER.

WESTIN

Westin Automotive Products, Inc.
320 W. Covina Blvd
San Dimas, Ca. 91773

Thank you for choosing Westin products
for additional installation assistance please call
Customer Service (800) 793-7846

www.westinautomotive.com



WARNING



Failure to follow these instructions could lead to death, personal injury, and / or property damage.

Failure to follow these instructions could lead to death, personal injury, and / or property damage.

FASTENERS:

All Westin supplied fasteners must be utilized and installed in accordance with the installation instructions and apply torque to the specifications as defined. **DOUBLE CHECK ALL FASTENERS BEFORE INITIAL USE, AND PERIODICALLY IN THE FUTURE TO ENSURE PROPER FUNCTION AND SAFETY.**

DRILLING:

Most Westin products do not require drilling for installation. If drilling is defined as required, use caution when drilling a vehicle. **FAILURE TO REVIEW AN AREA TO BE DRILLED MAY RESULT IN PERSONAL INJURY AND/OR INJURY TO OTHERS AS WELL AS VEHICLE DAMAGE.**

EYE PROTECTION:

ALWAYS WEAR SAFETY GLASSES OR GOGGLES DURING THE INSTALLATION PROCESS TO AVOID PERSONAL INJURY.

MAXIMUM TOWING/CARRYING CAPACITY: (if applicable)

The Westin Receiver Hitches will have a visible tow rating label affixed directly on the product. User should never exceed the vehicle manufacturers maximum tow and weight rating regardless of the capacity of the hitch. **FAILURE TO FOLLOW THESE GUIDELINES WILL VOID THE WESTIN WARRANTY AND MAY RESULT IN PERSONAL INJURY AND/OR INJURY TO OTHERS AS WELL AS VEHICLE DAMAGE.**

FOR CALIFORNIA RESIDENTS ONLY-PROP 65 WARNING:

Some products may contain chemicals such as DEHP, which can cause cancer, birth defects or other reproductive harm. For more info go to www.p65warnings.ca.gov



Westin Automotive Products, Inc.
320 W. Covina Blvd
San Dimas, Ca. 91773