

INSTALLATION INSTRUCTIONS

HDX, SPORTSMAN, & SPORTSMAN X GRILLE GUARD

APPLICATION:

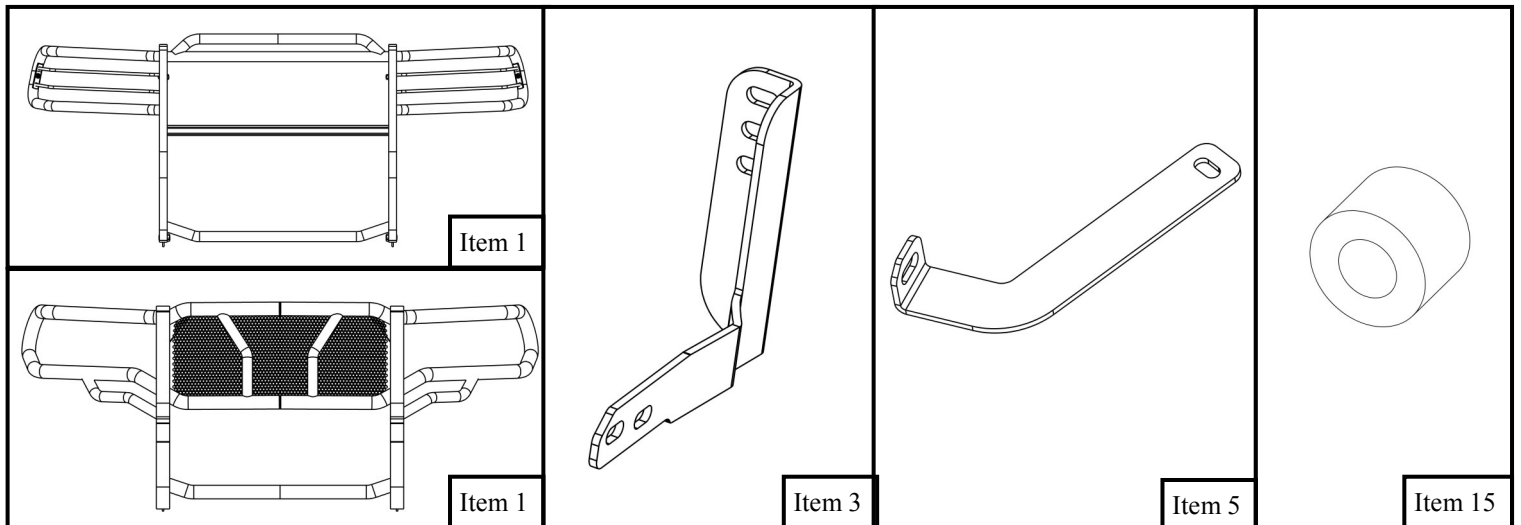
2014 –2019 TOYOTA 4 RUNNER (EXCLUDES “LIMITED” MODELS)

PART NUMBER:

45-3820, 40-3825, 57-3825, 40-33825

ITEM	QUANTITY	DESCRIPTION	TOOLS NEEDED
1	1	SPORTSMAN / HDX GRILLE GUARD	BREAKER BAR
2	1	DRIVER SIDE LOWER MOUNTING BRACKET	14MM SOCKET
3	1	PASSENGER SIDE LOWER MOUNTING BRACKET	14MM WRENCH
4	1	DRIVER SIDE UPPER SUPPORT BRACKET	RATCHET
5	1	PASSENGER SIDE UPPER SUPPORT BRACKET	ALLEN WRENCH
6	4	M12-1.75X35 HEX SOCKET BUTTON HEAD SCREW	18MM SOCKET
7	4	M12 CUPPED WASHER	15MM SOCKET
8	4	M12-1.75 SERRATED FLANGE NUT	13MM SOCKET
9	2	M10-1.50X35 HEX SOCKET BUTTON HEAD SCREW	13MM WRENCH
10	2	M10 CUPPED WASHER	FLAT HEAD SCREW-DRIVER
11	2	M10-1.50 SERRATED FLANGE NUT	
12	2	M8-1.25X40 HEX HEAD CAP SCREW	TORQUE WRENCH
13	4	M8 FLAT WASHER	
14	2	M8-1.25 NYLOCK HEX NUT	
15	2	SHORT SPACER	

ANTI-SEIZE LUBRICANT MUST BE USED ON ALL STAINLESS STEEL FASTENERS TO PREVENT THREAD DAMAGE AND GALLING



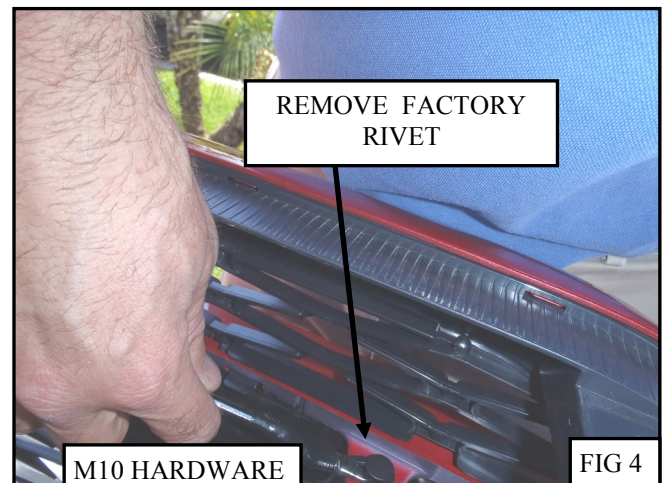
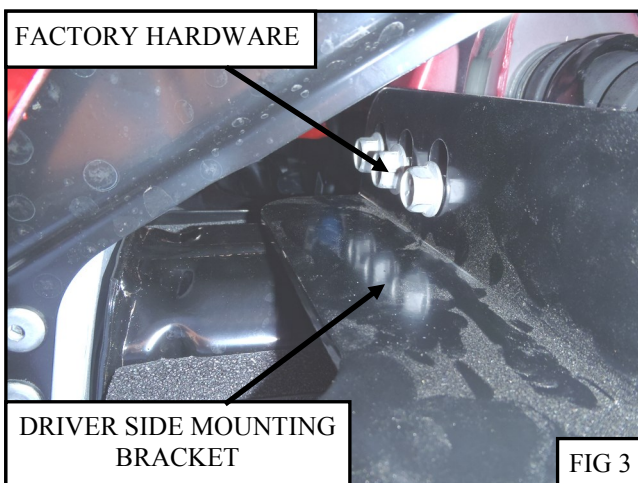
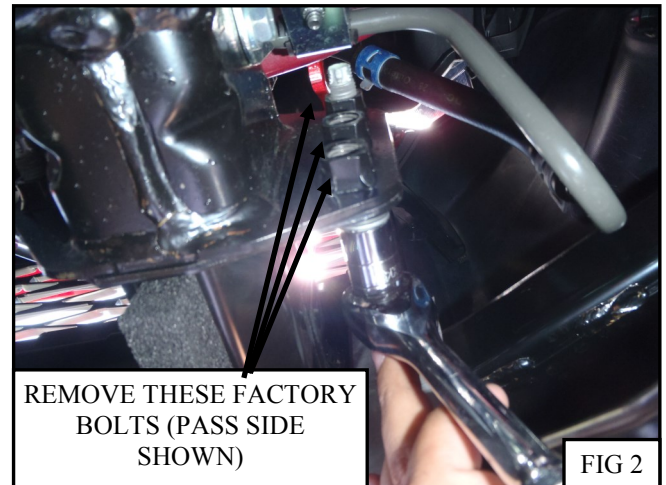
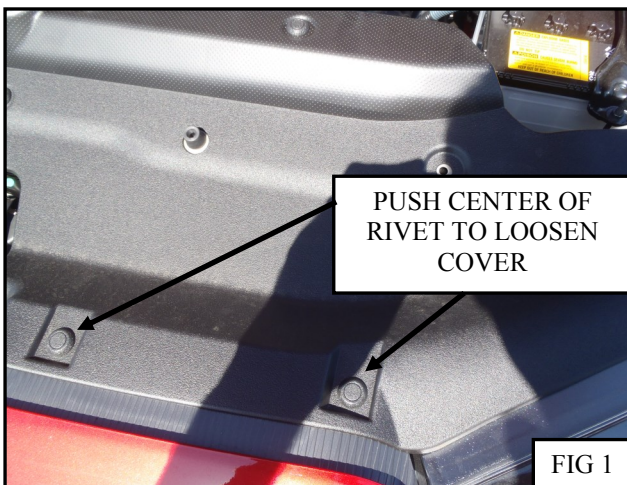
PROCEDURE

1. Remove contents from box, verify if all parts listed are present and free from damage.

Carefully read and understand all instructions before attempting installation.

Failure to identify damage before installation could lead to a rejection of any claim.

2. Remove contents from box, verify if all parts listed are present and free from damage. Carefully read and understand all instructions before attempting installation.
3. From beneath the vehicle, remove the outer (3) factory frame horn bolts from each side of the frame. (Figure 2)
4. Loosely attach the lower mounting brackets (Item 2&3) to the frame using the existing factory hardware removed in step 2. (Figure 3)
5. Take off the plastic radiator cover by removing the plastic rivets. Push on the center of the rivets to loosen them. (Figure 1)
6. Remove the (2) plastic rivets holding the grille to the metal radiator support. They will not be re-used. (Figure 4)
7. Loosely install the driver upper support bracket (Item 4) using (1) metal spacer (Item 15), (1) M8 hex head cap screws (Item 12), (2) M8 flat washers (Item 13), and (1) M8-1.25 nylock hex nuts (Item 14). (Figure 5)
8. Repeat step 6 to install the passenger upper support bracket.
9. With assistance, install the Grille Guard to the brackets using M12 hardware on the lower brackets and M10 hardware on the upper support brackets. (Figures 6&7)
10. Align and adjust the Grille Guard, then torque all M12 hardware to 35-40 ft-lbs, M10 to 25-30 ft-lbs, and M8 to 8-10 ft-lbs.



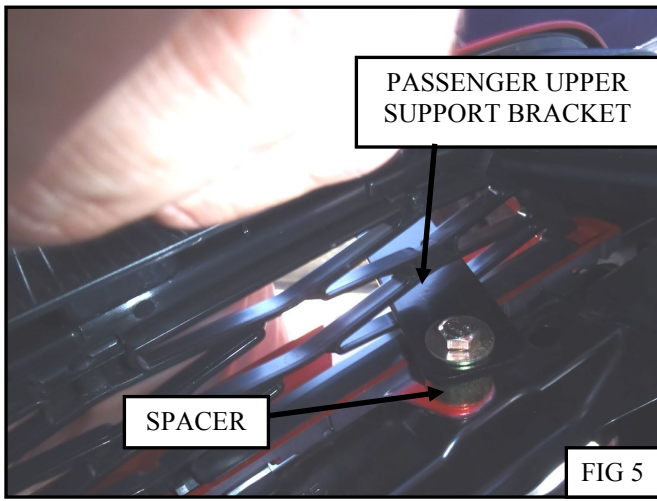


FIG 5



FIG 6

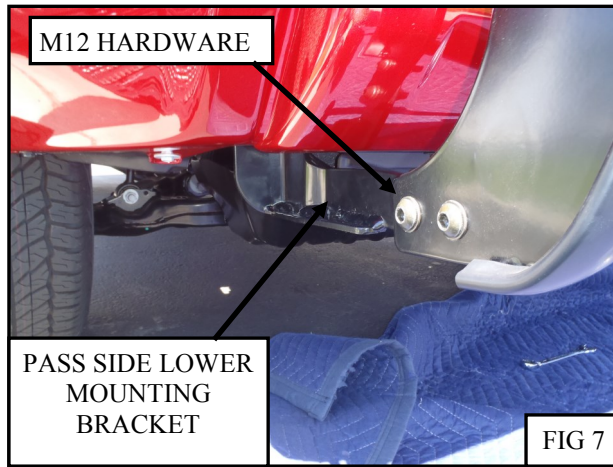
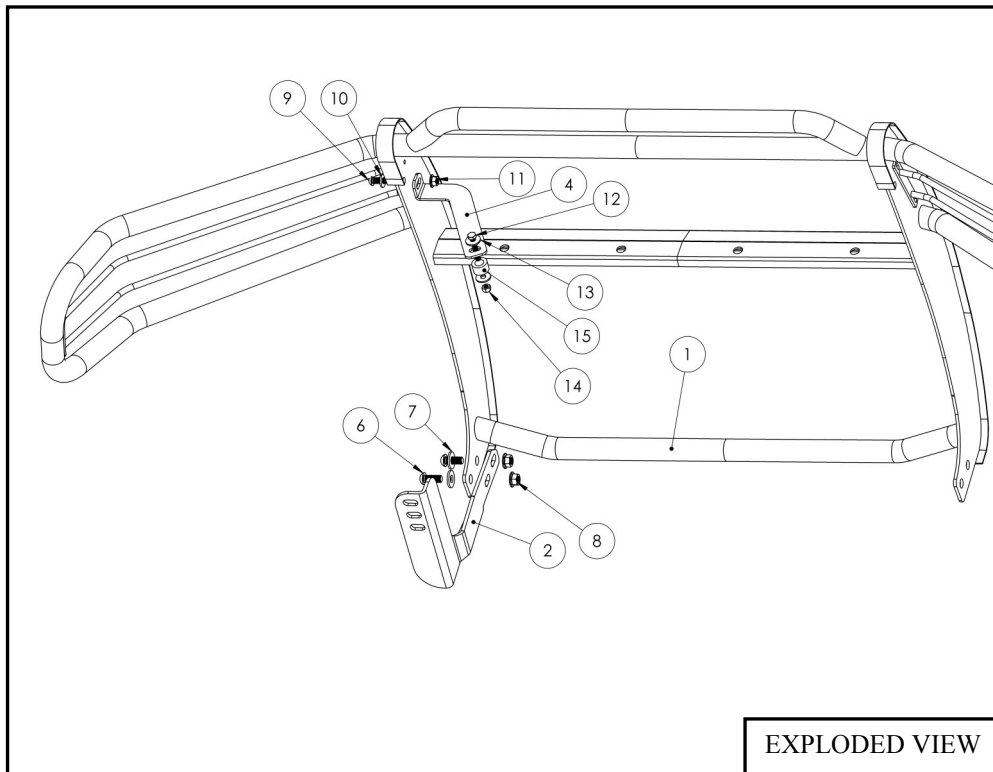


FIG 7



EXPLODED VIEW

INSTALLATION COMPLETE



CARE INSTRUCTIONS

- REGULAR WAXING IS RECOMMENDED. DO NOT USE ANY TYPE OF POLISH OR WAX THAT MAY CONTAIN ABRASIVES.
- STAINLESS STEEL PRODUCTS CAN BE CLEANED WITH MILD SOAP AND WATER. STAINLESS STEEL POLISH SHOULD BE USED TO POLISH SMALL SCRATCHES.
- GLOSS BLACK FINISHES SHOULD BE CLEANED WITH MILD SOAP AND WATER.

WESTIN Westin Automotive Products, Inc.
320 Covina Blvd
San Dimas, Ca. 91773

Thank You for choosing Westin products
For Additional installation assistance please call
Customer service (800) 793-7846
www.westinautomotive.com



WARNING



Failure to follow these instructions could lead to death, personal injury, and / or property damage.

Failure to follow these instructions could lead to death, personal injury, and / or property damage.

FASTENERS:

All Westin supplied fasteners must be utilized and installed in accordance with the installation instructions and apply torque to the specifications as defined. **DOUBLE CHECK ALL FASTENERS BEFORE INITIAL USE, AND PERIODICALLY IN THE FUTURE TO ENSURE PROPER FUNCTION AND SAFETY.**

DRILLING:

Most Westin products do not require drilling for installation. If drilling is defined as required, use caution when drilling a vehicle. **FAILURE TO REVIEW AN AREA TO BE DRILLED MAY RESULT IN PERSONAL INJURY AND/OR INJURY TO OTHERS AS WELL AS VEHICLE DAMAGE.**

EYE PROTECTION:

ALWAYS WEAR SAFETY GLASSES OR GOGGLES DURING THE INSTALLATION PROCESS TO AVOID PERSONAL INJURY.

MAXIMUM TOWING/CARRYING CAPACITY: (if applicable)

The Westin Receiver Hitches will have a visible tow rating label affixed directly on the product. User should never exceed the vehicle manufacturers maximum tow and weight rating regardless of the capacity of the hitch. **FAILURE TO FOLLOW THESE GUIDELINES WILL VOID THE WESTIN WARRANTY AND MAY RESULT IN PERSONAL INJURY AND/OR INJURY TO OTHERS AS WELL AS VEHICLE DAMAGE.**

FOR CALIFORNIA RESIDENTS ONLY-PROP 65 WARNING:

Some products may contain chemicals such as DEHP, which can cause cancer, birth defects or other reproductive harm. For more info go to www.p65warnings.ca.gov



Westin Automotive Products, Inc.
320 Covina Blvd
San Dimas, Ca. 91773

Thank You for choosing Westin products
For Additional installation assistance please call
Customer service (800) 793-7846
www.westinautomotive.com