



INSTALLATION INSTRUCTIONS

HDX MODULAR GRILLE GUARD

APPLICATION:

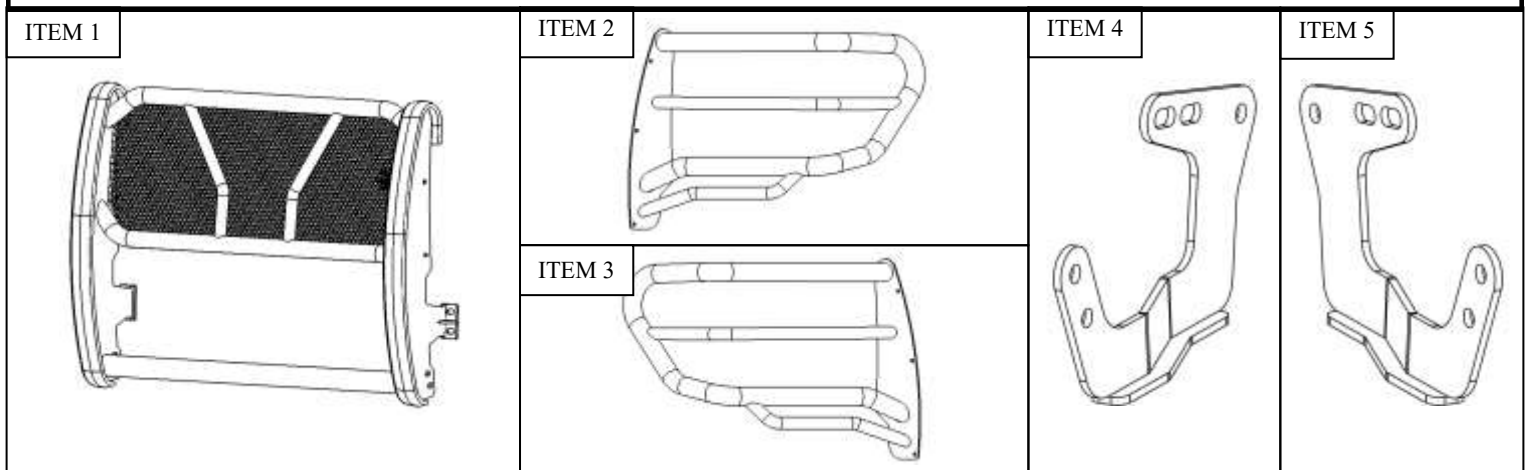
2011-2016 Ford F-250/350 Super Duty

PART NUMBER:

57-22370, 57-22375

CONTENT			
ITEM	QUANTITY	DESCRIPTION	TOOLS NEEDED
1	1	HDX GRILLE GUARD BASE	13MM WRENCH
2	1	HDX DRIVER WING	13MM SOCKET
3	1	HDX PASSENGER WING	18MM SOCKET
4	1	DRIVER SIDE LOWER MOUNTING BRACKET	18MM WRENCH
5	1	PASSENGER SIDE LOWER MOUNTING BRACKET	RATCHET
6	2	M12 HEX HEAD BOLTS (YELLOW ZINC)	ALLEN WRENCH
7	2	M12 STUD PLATES	TORQUE WRENCH
8	6	M12 FLAT WASHERS (YELLOW ZINC)	
9	4	M12 LOCK WASHERS (YELLOW ZINC)	
10	4	M12 HEX NUTS (YELLOW ZINC)	
11	4	M12 HEX HEAD BOLTS (BLACK ZINC or RAW S/S)	
12	8	M12 FLAT WASHERS (BLACK ZINC or RAW S/S)	
13	4	M12 LOCK WASHERS (BLACK ZINC or RAW S/S)	
14	4	M12 HEX NUTS (BLACK ZINC or RAW S/S)	
15	2	M12 PLASTIC RETAINERS	
16	10	M8 BUTTON HEAD HEX SOCKET BOLT (BLACK ZINC or RAW S/S)	
17	10	M8 BELLVILLE WASHER (BLACK ZINC or RAW S/S)	
18	10	M8 SERRATED FLANGE NUT (BLACK ZINC or RAW S/S)	

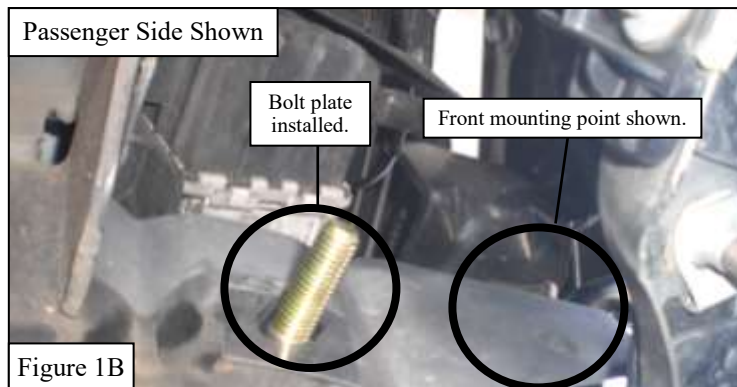
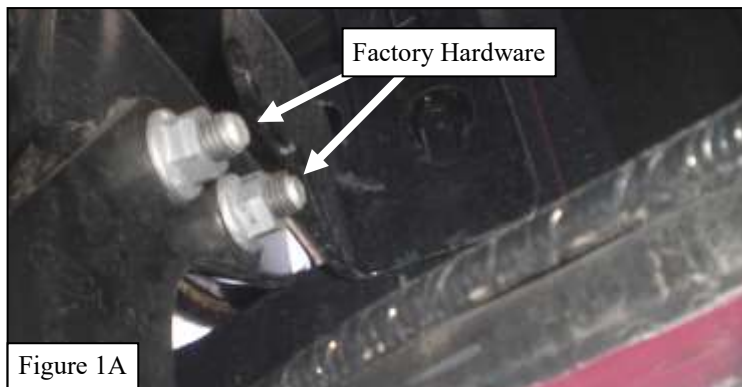
ANTI-SEIZE LUBRICANT MUST BE USED ON ALL STAINLESS STEEL FASTENERS TO PREVENT THREAD DAMAGE AND GALLING



PROCEDURE

1. Remove contents from box, verify if all parts listed are present and free from damage.
Carefully read and understand all instructions before attempting installation.
Failure to identify damage before installation could lead to a rejection of any claim.

- Starting underneath the front of the vehicle, determine if your vehicle is equipped with factory frame horns. If so, the factory hardware will be used to install the mounting brackets as shown in **Figure 1A**. If the vehicle is not equipped with factory frame horns, insert (1) M12 stud plate into the slot in the frame and thread (1) plastic retainer onto the stud plate to keep it from falling into the frame as shown in **Figure 1B**.
- Take the Driver Side Lower Mounting Bracket and attach it to the previously installed stud plate using (1) M12 flat washer, (1) M12 lock washer, and (1) M12 hex nut. Attach the front mounting point using (1) M12 hex head bolt, (2) M12 flat washers, (1) M12 lock washer and (1) M12 hex nut. See **Figure 2** for reference. Repeat this step for passenger side. **Note:** *The lower plastic valance must be trimmed to allow clearance of the mounting bracket, and removal of the factory tow hooks (if equipped) is required for installation.*



- Move to the front of the OEM bumper and remove the (4) factory bumper bolts. See **Figure 3** for reference. **Note:** *The (4) factory bumper bolts and the (2) factory nut plates will be used to attach the HDX Grille Guard Base.*



5. With assistance, take the HDX Grille Guard Base and align it with the mounting brackets and the factory bumper bolt locations. Attach the HDX Grille Guard Base to the lower brackets using the supplied M12 hardware (Items 11-14). See **Figures 4, 5, and 8** for reference.
6. Attach the upper HDX Grille Guard Base mounting tabs using the (4) factory bumper bolts, install them as they were previously removed. See **Figures 5 through 8** for reference.

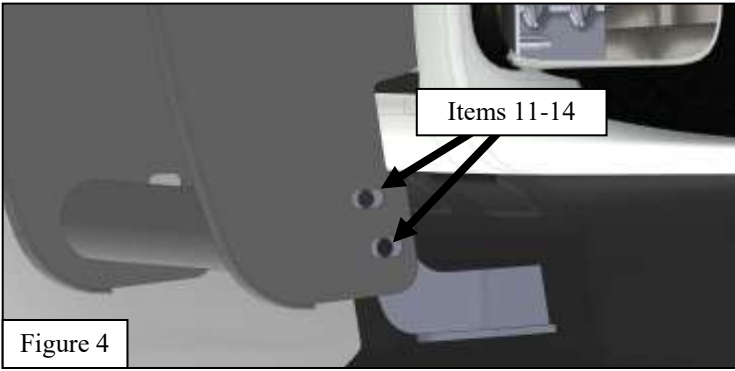


Figure 4



Figure 5



Figure 6

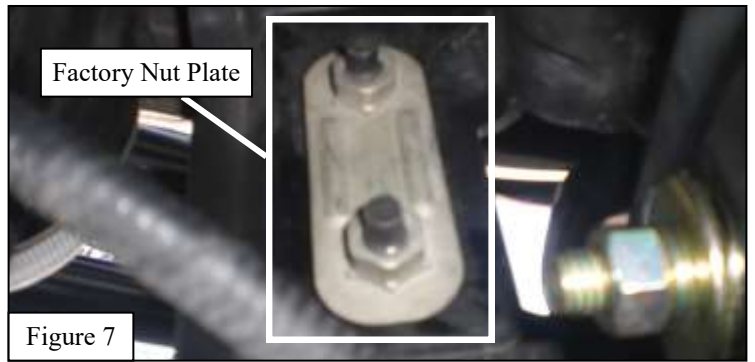


Figure 7

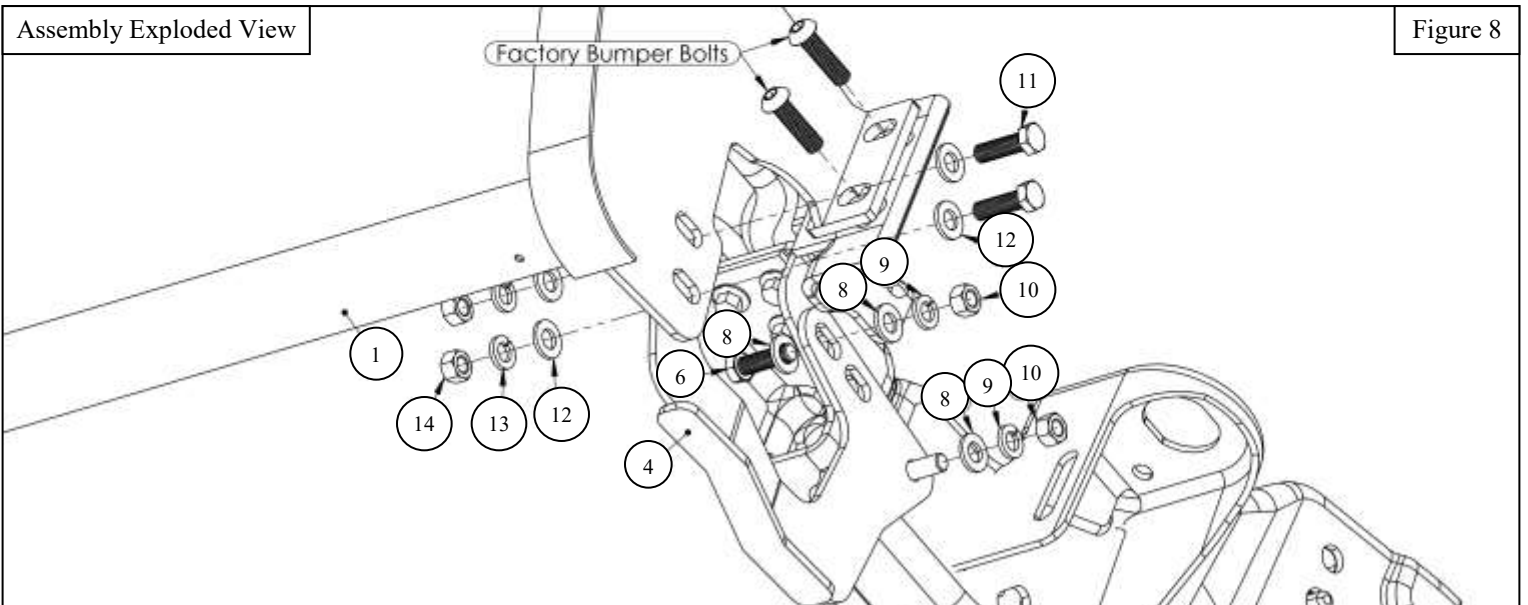
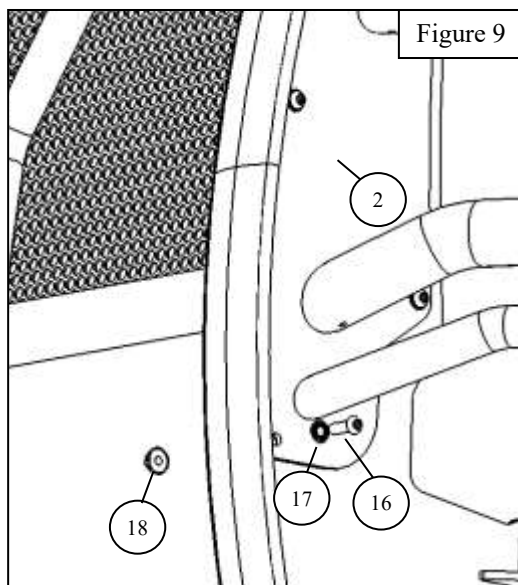


Figure 8

7. Locate and mount the HDX Driver Wing (Item 2) to the HDX Grille Guard Base using the supplied M8 hardware (Items 16-18). See **Figure 9** for reference.
8. Repeat **Step 7** for the HDX Passenger Wing (Item 3).
9. Align and adjust HDX Grille Guard Base, HDX Wings, and mounting brackets as necessary. Fully tighten and torque hardware as specified: M8 hardware to 16-18 ft-lbs., all M12 hardware to 55 ft-lbs., and factory hardware to factory specifications.



INSTALLATION COMPLETE



CARE INSTRUCTIONS

- REGULAR WAXING IS RECOMMENDED. DO NOT USE ANY TYPE OF POLISH OR WAX THAT MAY CONTAIN ABRASIVES.
- STAINLESS STEEL PRODUCTS CAN BE CLEANED WITH MILD SOAP AND WATER. STAINLESS STEEL POLISH SHOULD BE USED TO POLISH SMALL SCRATCHES.
- GLOSS BLACK FINISHES SHOULD BE CLEANED WITH MILD SOAP AND WATER.

WESTIN

Westin Automotive Products, Inc.
320 W. Covina Blvd
San Dimas, Ca. 91773

Thank you for choosing Westin products
for additional installation assistance please call
Customer Service (800) 793-7846
www.westinautomotive.com



WARNING



Failure to follow these instructions could lead to death, personal injury, and / or property damage.

Failure to follow these instructions could lead to death, personal injury, and / or property damage.

FASTENERS:

All Westin supplied fasteners must be utilized and installed in accordance with the installation instructions and apply torque to the specifications as defined. **DOUBLE CHECK ALL FASTENERS BEFORE INITIAL USE, AND PERIODICALLY IN THE FUTURE TO ENSURE PROPER FUNCTION AND SAFETY.**

DRILLING:

Most Westin products do not require drilling for installation. If drilling is defined as required, use caution when drilling a vehicle. **FAILURE TO REVIEW AN AREA TO BE DRILLED MAY RESULT IN PERSONAL INJURY AND/OR INJURY TO OTHERS AS WELL AS VEHICLE DAMAGE.**

EYE PROTECTION:

ALWAYS WEAR SAFETY GLASSES OR GOGGLES DURING THE INSTALLATION PROCESS TO AVOID PERSONAL INJURY.

MAXIMUM TOWING/CARRYING CAPACITY: (if applicable)

The Westin Receiver Hitches will have a visible tow rating label affixed directly on the product. User should never exceed the vehicle manufacturers maximum tow and weight rating regardless of the capacity of the hitch. **FAILURE TO FOLLOW THESE GUIDELINES WILL VOID THE WESTIN WARRANTY AND MAY RESULT IN PERSONAL INJURY AND/OR INJURY TO OTHERS AS WELL AS VEHICLE DAMAGE.**

FOR CALIFORNIA RESIDENTS ONLY-PROP 65 WARNING:

Some products may contain chemicals such as DEHP, which can cause cancer, birth defects or other reproductive harm. For more info go to www.p65warnings.ca.gov



Westin Automotive Products, Inc.
320 W. Covina Blvd
San Dimas, Ca. 91773