



Installation Instructions
Front Bolt-On/Rugged Look Fender Flares
GMC Sierra 1500 (19-On) FF914

Important: Please read instructions entirely before installing this product.

Hardware Included	QTY
Extrusion	30ft
U CLIP .6mm	22

Hardware Included	QTY

Bolt Kit Included	QTY
Nuts	42
Torx drive Bolts	42

Ensure that both left and right hand Fender Flares suit the profile of the vehicle. Note the areas where the Fender Flares come in contact with the vehicle. NOTE: If there is a body side molding, mark where the molding is to be cut, alternatively the Fender Flare can be cut to go around the molding. Be sure to allow enough room for the extrusion. **No drilling of vehicle is required for Bolt-On Look Fender Flares. This is a non-drill product.**

***PRIOR TO ANY PAINTING & INSTALLATION, PRODUCT SHOULD BE THOROUGHLY INSPECTED FOR ALL COMPONENTS LISTED ABOVE. PRODUCT SHOULD ALSO BE TEST FITTED PRIOR TO ANY PAINTING & INSTALLATION. PLEASE CONTACT EGR IF YOU HAVE ANY FITMENT QUESTIONS AND OR MISSING COMPONENTS.**

**FOR RUGGED FLARES, INSTALL WILL START AT STEP 2
 IF FLARES ARE PURCHASED PAINTED, INSTALL WILL START AT STEP 4**

PAINTING INSTRUCTIONS – If Fender Flares are being painted; do not install edge extrusion until painting is complete. Prior to painting, clean all surfaces to be painted using clean water and a mild detergent, do not use lacquer thinner or any solvent based products. Wipe completely dry. Best results will be achieved by wiping the areas to be painted with a tack rag just prior to painting. Most automotive paints can be applied directly to the Fender Flares, however some may require a primer (check paint manufacturer specifications). Good adhesion will be achieved without sanding. Select a paint (and primer if necessary) that is suitable for rigid plastics PMMA (Acrylic). If using a paint system that requires baking, do not expose the product to temperatures above 70°C (158°F). Do not fit the extrusion or any of the hardware to the Fender Flares until the paint is completely dry.



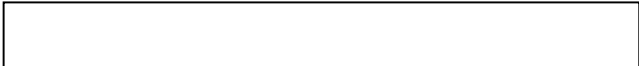
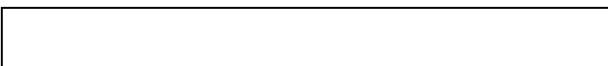
STEP 1: Attach the bolts and nuts to each Fender Flare using a 3/16" Allen key/Trox and a 1/2" wrench/socket. (wrench /socket and Allen key not supplied). Ensure inside of Fender Flares where the rubber seal is attached is clean, using the alcohol wipes provided. Wipe away any residue with a dry clean cloth.



STEP 2: Attach the included rubber seal to the Fender Flares. Peel back 2" of the adhesive backing and position on the Fender Flare. Attach the seal to the Fender Flare, peeling back a few inches at a time. Ensure pressure is used to secure rubber seal to Fender Flare edge. Attach rubber seal along all areas the Fender Flare will make contact with the vehicle body.

For Technical Support/Warranty Information please call 800-757-7075

EGR Inc., 4000 East Greystone Drive, Ontario, CA 91761





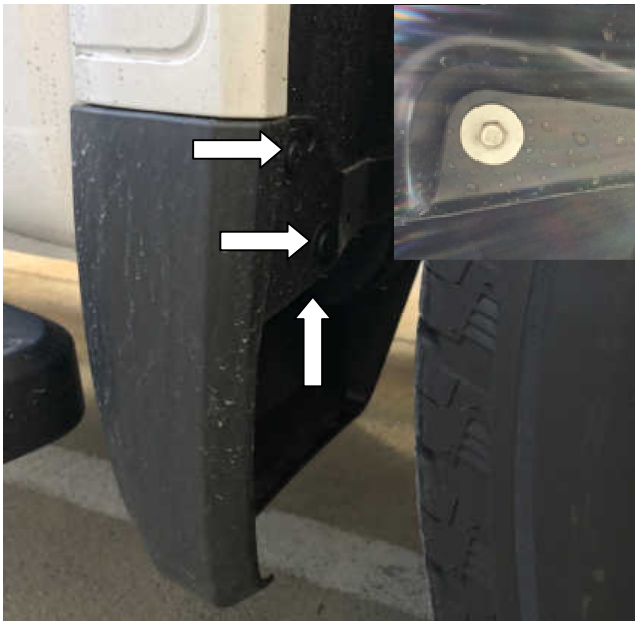
Installation Instructions
Front Bolt-On/Rugged Look Fender Flares
GMC Sierra 1500 (19-On) FF914



STEP 3: Trim excess rubber seal and discard.



STEP 4: Clean the body areas where the Fender Flares will make contact. Ensure fenders are dry prior to install. Turn tires outward for Fender Flare installation.



STEP 5: Using #15 Torx head screwdriver remove the upper and lower screws from the front factory mudguards and using M10 socket remove the underside screw indicated above, maintain #15 Torx head screws for re-install. Fender flares require the mud guards to be removed. Retain factory mudguards for later use if required.



STEP 6: Place Fender Flare on the vehicle into the position of best fit. Using #15 Torx head screwdriver re-install previously removed factory mudguard screw at the lower screw location through the slots in the Fender Flare at the noted location.

For Technical Support/Warranty Information please call 800-757-7075

EGR Inc., 4000 East Greystone Drive, Ontario, CA 91761



Installation Instructions
Front Bolt-On/Rugged Look Fender Flares
GMC Sierra 1500 (19-On) FF914



STEP 7: To secure the Fender Flare to the body, install the U shape clip so that the clip slides over the inner factory fender trim panel lip and is in line with the slot in the Fender Flare. To secure the clip to Fender Flare apply inward tension on Fender Flare, position the clip so that the notch in the clip locates securely in the slot of the Fender Flare. Ensure all fixing points are tight and secure and that the rubber seal is flush neatly against the vehicle body. Repeat install steps for the opposite side.

For Technical Support/Warranty Information please call 800-757-7075

EGR Inc., 4000 East Greystone Drive, Ontario, CA 91761



Installation Instructions

Front Bolt-On/Rugged Look Fender Flares
GMC Sierra 1500 (19-On) FF914

REAR FENDER FLARE INSTALLATION



STEP 8: Attach the bolts and nuts to each Fender Flare using 3/16" Allen key/Trox and a 1/2" wrench/socket. (wrench /socket and Allen key not supplied). Ensure inside of Fender Flares where the rubber seal is attached is clean, using the alcohol wipes provided. Wipe away any residue with a dry clean cloth.



STEP 9: Attach the included rubber seal to the Fender Flares. Peel back 2" of the adhesive backing and position on the Fender Flare. Attach the seal to the Fender Flare, peeling back a few inches at a time. Ensure pressure is used to secure rubber seal to Fender Flare edge. Attach rubber seal along all areas the Fender Flare will make contact with the vehicle body. Trim excess rubber seal. Attach rubber seal to the bottom front corner of Fender Flares per the attached image that will locate around the factory spat.



STEP 10: Clean the body areas where the Fender Flares will make contact. Ensure fenders are dry prior to install.



STEP 11: Using #15 Torx head screwdriver remove the two upper and two underside screws from the rear factory mud guards in the rear wheel arch. Fender flares require the rear mud guards to be removed, maintain screws for re-install if required.

For Technical Support/Warranty Information please call 800-757-7075

EGR Inc., 4000 East Greystone Drive, Ontario, CA 91761



Installation Instructions
Front Bolt-On/Rugged Look Fender Flares
GMC Sierra 1500 (19-On) FF914



STEP 12: To secure the Fender Flare to the body, install the U shape clip so that the clip slides over the inner factory fender trim panel lip and is in line with the slot in the Fender Flare. To secure the clip to Fender Flare apply inward tension on Fender Flare to the vehicle fender, position the clip so that the notch in the clip locates securely in the slot of the Fender Flare. Ensure all fixing points are tight and secure and that the rubber seal is flush neatly against the vehicle body. Repeat install steps for the opposite side.

For Technical Support/Warranty Information please call 800-757-7075

EGR Inc., 4000 East Greystone Drive, Ontario, CA 91761