

HUSKY **WeatherBEATER™** **Custom Vehicle Floor Protection**

CARE AND USE INSTRUCTIONS

Thank you for selecting a WeatherBeater® Floor Liner from Winfield Consumer Products. Your new front floor liners are custom molded to fit your Honda Accord Sedan (4-Doors). The liners are made to take the place of your factory floor mats. **For correct fit, it is necessary to remove the factory floor mats before installing your new floor liners.** However, do not remove the factory-installed carpeting.

Your liners are made from an engineering resin that is lightweight and extremely tough and durable. The easiest way to clean your liners is with a damp cloth or sponge. If using a cleaner, 409® or Glass Plus® work well. Use of Armor All®, Son-of-a-Gun® or similar items is discouraged as these products make the liners slick.

INSTALLATION INSTRUCTIONS FOR YOUR HONDA ACCORD FRONT FLOOR LINERS



LEFT OR DRIVER'S SIDE

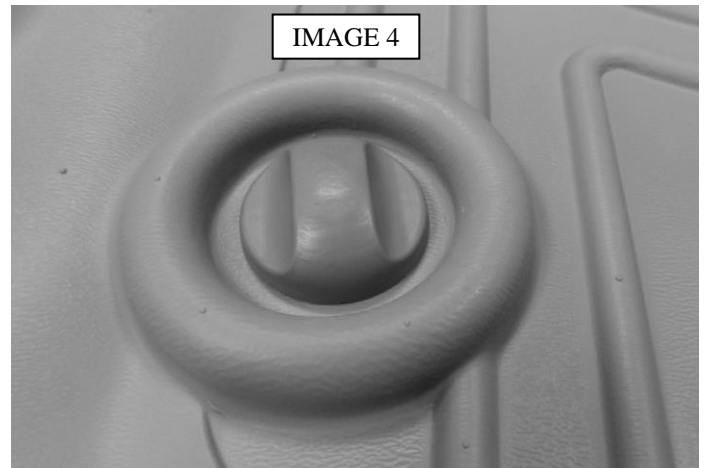
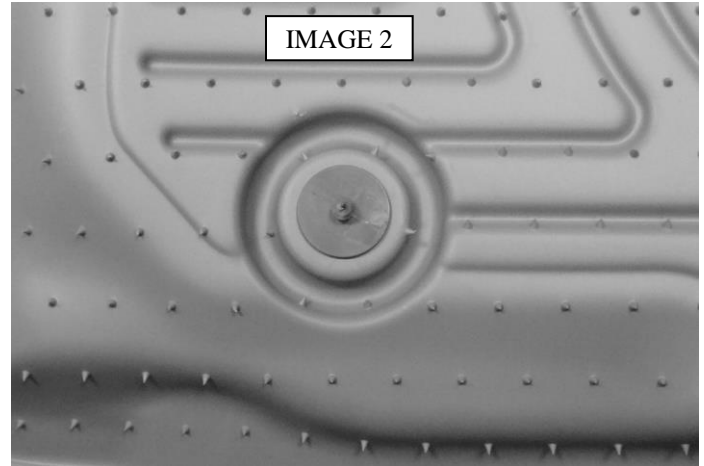
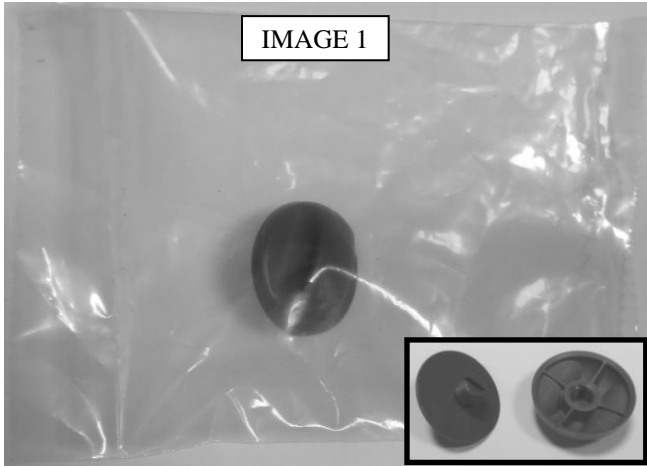
RIGHT OR PASSENGER'S SIDE

YOUR ACCORD LINERS ATTACH TO THE FACTORY "TWIST LOCK" FASTENERS. YOU MUST REMOVE THE FACTORY MATS BEFORE INSTALLING YOUR ACCORD LINERS. MAKE SURE YOUR LINERS ARE SECURED TO THE TWIST-LOCK FASTENERS BEFORE OPERATING THE VEHICLE. IF YOU HAVE ANY TROUBLE SECURING THE LINERS PLEASE CONTACT HUSKY LINERS AT 800-344-8759.

(PROCEED TO BACK PAGE)

INSTALLING PASSENGER SIDE RETENTION CLIP

IN YOUR PACKAGING YOU WILL FIND A COMPONENT BAG WITH A FASTENER THAT WILL BE USED TO SECURE THE PASSENGER SIDE LINER IN PLACE. LOCATE THE FASTENER IN YOUR PACKAGING, REMOVE IT AND UNSCREW THE CAP FROM THE BASE (SEE IMAGE 1 BELOW). NEXT INSERT THE THREADED PORTION OF THE BASE INTO THE HOLE IN THE PASSENGER SIDE LINER, INSERTING IT FROM THE BACK SIDE OF THE LINER (SEE IMAGE 2 BELOW). WITH THIS DONE INSTALL AND POSITION THE LINER IN THE VEHICLE AND, USING A COIN, SCREWDRIVER OR SIMILAR, SCREW THE BASE OF THE FASTENER INTO THE CARPETING (SEE IMAGE 3). LASTLY, AS SHOWN IN IMAGE 4, INSTALL THE CAP ONTO THE BASE. TIGHTEN UNTIL THE CAP MEETS RESISTANCE, DO NOT OVER TIGHTEN.



TO TRIM FOR ACCESS FOR FUEL DOOR RELEASE LEVER

USING THE WALL CREATED BY THE LOWERED SECTION IN YOUR LINER AS YOUR GUIDE, TRIM OUT THE RECESSED SECTION IN YOUR LINER TO GAIN ACCESS TO THE FUEL DOOR RELEASE. YOU CAN ALSO TRIM THE SMALL RECESS THAT PROVIDES ACCESS TO THE FUEL DOOR LOCK. YOU CAN ALSO SIMPLY LIFT YOUR LINER TO ACCESS THE RELEASE.



HUSKY **WeatherBEATER™** **Custom Vehicle Floor Protection**

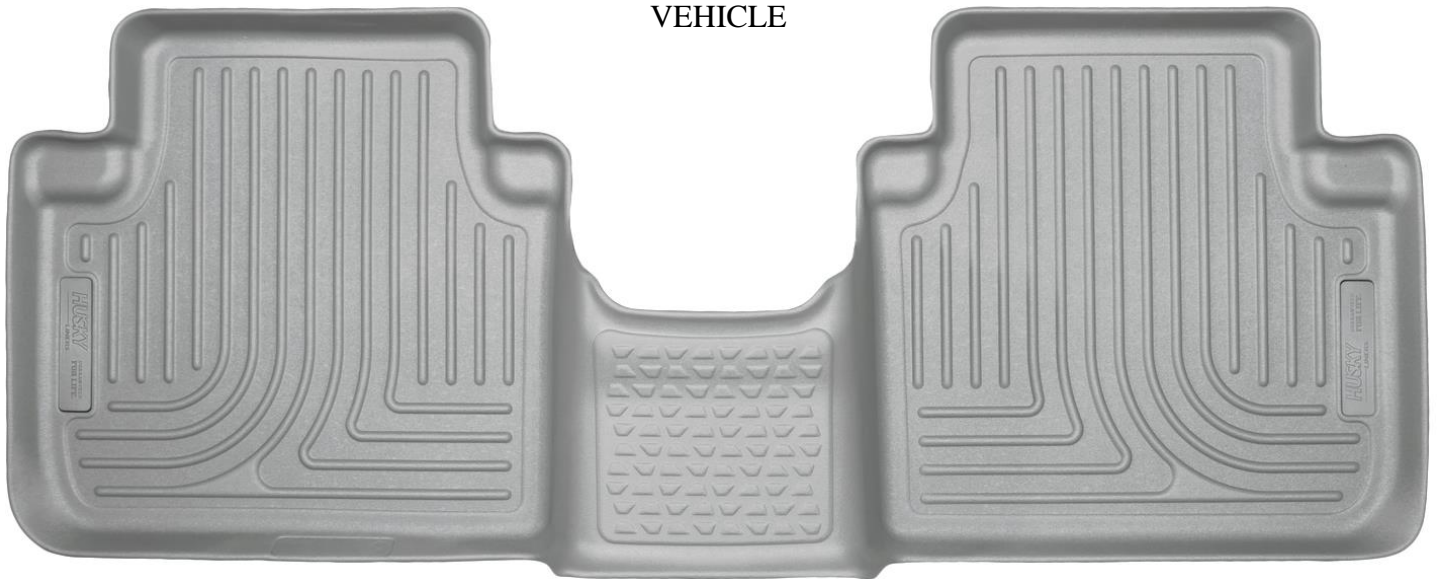
CARE AND USE INSTRUCTIONS

Thank you for selecting a WeatherBeater® Floor Liner from Winfield Consumer Products. Your new rear floor liners are custom molded to fit your Honda Accord Sedan (4-Doors). The liners are made to take the place of your factory floor mats. **For correct fit, it is necessary to remove the factory floor mat before installing your new floor liners.** However, do not remove the factory-installed carpeting.

Your liners are made from an engineering resin that is lightweight and extremely tough and durable. The easiest way to clean your liners is with a damp cloth or sponge. If using a cleaner, 409® or Glass Plus® work well. Use of Armor All®, Son-of-a-Gun® or similar items is discouraged as these products make the liners slick.

INSTALLATION INSTRUCTIONS FOR YOUR HONDA ACCORD REAR SEAT FLOOR LINER

FRONT OF
VEHICLE



TO EASE INSTALLATION OF YOUR 2nd SEAT ACCORD SEDAN FLOOR LINER, FIRST MOVE THE FRONT SEATS TO THEIR MOST FORWARD POSITIONS. WITH THIS DONE, INSERT LINER IN VEHICLE THEN REPOSITION THE FRONT SEATS AS DESIRED.