



BT1000 series – Heavy Duty Truck Combination Winter Front and Bug Screen INSTALLATION INSTRUCTIONS

IMPORTANT NOTES:

- 1) **THE BUG SCREEN MUST BE USED AS THE TEMPLATE IN EITHER INSTALLATION METHOD.**
- 2) **SOME MODELS MAY REQUIRE INSTALLATION ON OR UNDER THE HOOD OR TO THE BUMPER. SEE NOTES ON REVERSE.**

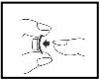
OPTION 1 – NO-DRILL INSTALLATION WITH STICK-A-STUD™ FASTENERS INCLUDED:

Before installing Stick A Stud™ *D* fasteners, please note:

- Clean area with isopropyl alcohol swab (supplied)
- Surface must be completely dry, wax free with no cleaning fluid present.
- For best results, install at temperatures over 60°F (16°C). Ensure that surface of the vehicle is warm to the touch. Use a hair dryer to warm up the surface and the Stick A Stud™ *D* if necessary. **IF THIS CONDITION CANNOT BE MET, YOU MAY WANT TO CONSIDER DRILL-ON INSTALLATION (SEE REVERSE).**
- The base of the Stick A Stud™ *D* can be shaped by bending or folding along the indented lines

FOR CONCAVE OR CONVEX SURFACES

FOR ANGLED SURFACES



- In some instances (ie. narrow grill frame) the Stick A Stud™ *D* fastener's base may require trimming. Simply cut as required



INSTALLATION:

- 1) Snap all Stick A Stud™ *D* fasteners to the bug screen while ensuring the protective backings remain intact.
- 2) Position the bug screen on the vehicle and note where each Stick A Stud™ *D* fastener will be located to ensure there will be maximum surface contact at each installation point.
- 3) Temporarily fasten the bug screen with masking tape to the vehicle.
- 4) Remove protective backing from a corner Stick A Stud™ *D*. **AVOID TOUCHING ADHESIVE.**
- 5) Apply firm pressure for 10 seconds.
- 6) Apply the next Stick A Stud™ *D* fastener ensuring that no stress is applied to other fasteners when installing the bug screen. **CAUTION: A MINIMAL AMOUNT OF STRESS ON THE BUG SCREEN FROM SIDE TO SIDE AND TOP TO BOTTOM IS RECOMMENDED. EXCESSIVE STRESS WILL CAUSE IMPROPER INSTALLATION.**
- 7) Attach remaining Stick A Stud™ *D* fasteners along top and bottom.
- 8) Carefully remove bug screen.
- 9) Again apply firm pressure to each Stick A Stud™ *D* fastener. **INSTANT BOND CAN BE INCREASED BY USING HAIR DRYER ON HIGH FOR 2-3 MINUTES ON EACH INSTALLED STUD.**
- 10) Allow a minimum of 24 hours before use. See chart below

BOND STRENGTH

TIME	BOND
20 minutes	50%
60 minutes	75%
24 hours	90%
72 hours	100%

OPTION 2 – DRILL ON INSTALLATION WITH SELF-TAPPING SCREWS AND STUDS INCLUDED:

Requires a drill with a 3/32" bit, masking tape and paper for template (newspaper will do)

- 1) Place bug screen face down and stretch out tight.
- 2) Cut a template from paper.
- 3) Mark the centers of all domes ensuring the paper does not slip.
- 4) Place template against grill. After lining up the dome marks tape template into place. Double check to ensure all dome marks are lined up to an area suitable for drilling.
- 5) Using the 3/32" drill bit drill through the template where the dome centers are marked.
- 6) Remove template.
- 7) Securely fasten the studs to the grill with screws. Do not over tighten
- 8) Snap on bug screen or winter front.

Additional Stick A Stud™ "D" fasteners are available; part number HK104
They are also available in white; part number HK104-WHITE
Kits with studs and screws are also available; part number HK103

NOTES

- On some models there are more domes than are required for installation. Align unit with grill to determine which domes are required.



Fia Inc. Winnipeg, Canada R3L 0N3
Telephone (204) 475-0515 Toll-Free: 1-800-835-0438
Fax: (204) 284-8246 E-Mail: info@gofia.com Website: www.gofia.com