



2023-C Colorado ZR2 & Trail Boss

Mud Flap Set, Front

Mounting Diagram & Instructions

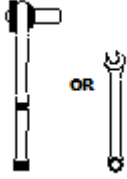
Kit# GCR215F

IMPORTANT:

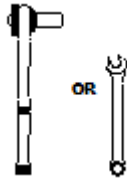
Manufacturer is not responsible for negligent use of vehicle with mud flaps installed, including over-tightening of screws and bolts causing damage to vehicle or mud flaps.



TOOLS REQUIRED-



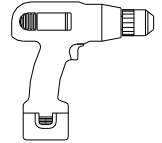
7/16" Open Wrench or
Socket Wrench



1/4" Open Wrench or
Socket Wrench



T15
Bit



Electric or Rechargeable
Drill

FLAPS

(1) Flap Assembly,
Front, DS

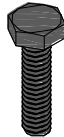
(1) Flap Assembly
Front, PS

(1) Bracket
Front, DS
Part #771156

(1) Bracket
Front, PS
Part #771157

PARTS BAG # 771158

a) (6) Capscrew, SS
1/4"-20 x 1" Black Oxidized
Part #014073



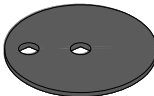
b) (2) Sht. Metal Screw, SS
8-18 x 1.25" Black Oxidized
Part #016061



c) (2) Washer, Flat, SS
0.281" x 1" Black Oxidized
Part #018069



d) (2) Washer, Offset, SS
0.203" x 1.5", Black Oxid.
Part # 018080



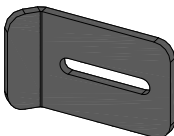
e) (2) Spring Nut, SS
1/4"-20 UNC x 27/32" Reach
Part #028011



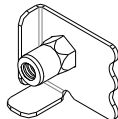
f) (4) Washer, Nylon
0.265" x 0.625", Black
Part # 054071



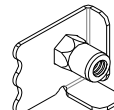
g) (4) J-Clamp, Alum.
1.5" x 2.5" Anodized
Part #767417



h) (2) Mount Clip, SS
Driver Side
Part #769312

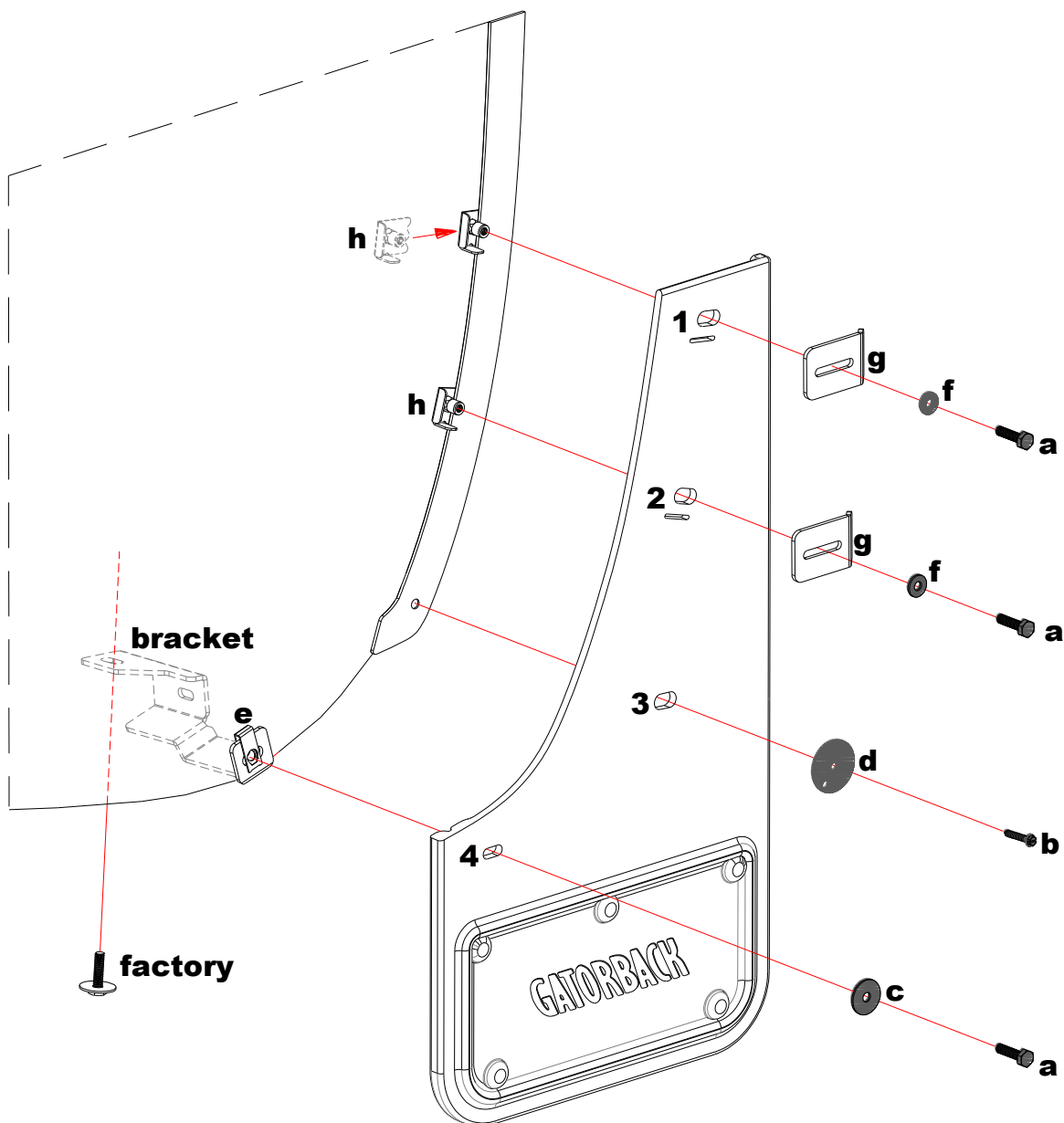


i) (2) Mount Clip, SS
Passenger Side
Part #769313



INSTALLATION *(For ease of installation it is suggested that the wheel be removed)*

1. Before you install your Mud Flap Set, see the diagram and parts list for all necessary parts. Start on the driver side.
2. Remove 1 factory screw from the wheel well and one from the underside of the body as shown.
3. Install the bracket as shown.
4. Install the bracket to the factory hole using the factory screw removed in step 2.
5. Install spring nut (e) on the bracket as shown.
6. Install mount clips (h) on mud flap holes #1 & #2 using a capscrew (a), j-clamp (g), and nylon washer (f).
7. Install mud flap hole #3 to factory hole using a sheet metal screw (b), and offset washer (d).
8. Slide mount clips behind wheel well.
9. Install mud flap hole #4 to the spring nut (e) installed in step 5 using a cap screw (a), and flat washer (c).
10. Using a square or other levelling tool, ensure that the mud flap is level. Tighten all fasteners, making sure the j-clamps are positioned to put pressure on the outer edge of the mud flap.
11. Repeat the procedure on the passenger side.



Please check out our YouTube channel to see an install video for this application.





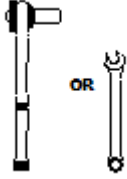
2023-C Colorado ZR2 & Trail Boss Mud Flap Set, Rear Mounting Diagram & Instructions Kit# GCR215R

IMPORTANT:

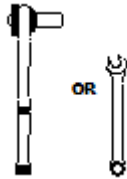
Manufacturer is not responsible for negligent use of vehicle with mud flaps installed, including over-tightening of screws and bolts causing damage to vehicle or mud flaps.



TOOLS REQUIRED-



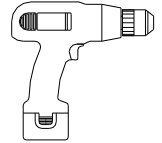
7/16" Open Wrench or
Socket Wrench



1/4" Open Wrench or
Socket Wrench



T15
Bit



Electric or Rechargeable
Drill

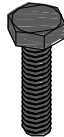
FLAPS

(1) Flap Assembly,
Rear, DS

(1) Flap Assembly
Rear, PS

PARTS BAG # 771159

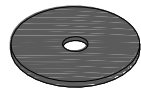
a) (4) Capscrew, SS
1/4"-20 x 1" Black Oxidized
Part #014073



b) (8) Sht. Metal Screw, SS
8-18 x 1.25" Black Oxidized
Part #016061



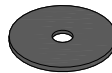
c) (8) Washer, Flat, SS
0.203" x 1" Black Oxidized
Part #018070



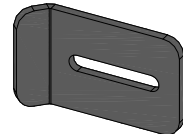
d) (4) Washer, Nylon
0.265" x 0.625", Black
Part #054071



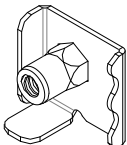
e) (2) Washer, Nylon
0.203" x 0.885", Black
Part #054080



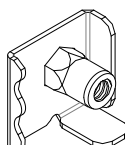
f) (6) J-Clamp, Alum.
1.5" x 2.5" Anodized
Part #767417



g) (2) Mount Clip, SS
Driver Side
Part #769308

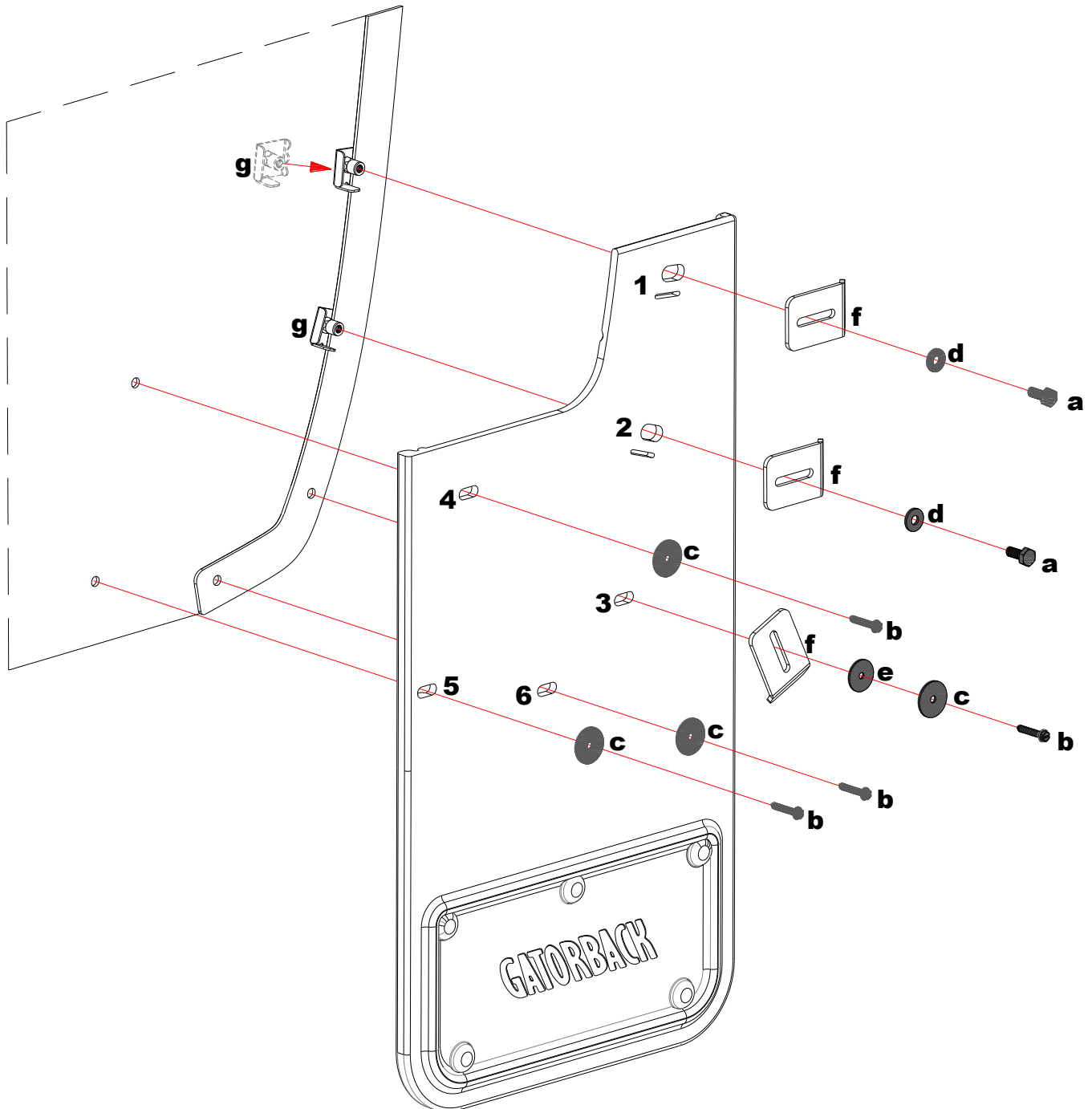


h) (2) Mount Clip, SS
Passenger Side
Part #769309



INSTALLATION *(For ease of installation it is suggested that the wheel be removed)*

1. Before you install your Mud Flap Set, see the diagram and parts list for all necessary parts. Start on the driver side.
2. Remove factory screw from wheel well.
3. Loosely install mount clips (g) on mud flap holes #1 & #2 using a capscrew (a), j-clamp (f), and nylon washer (d).
4. Loosely install mud flap hole #3 to factory hole using a sheet metal screw (b), flat washer (c), nylon washer (e), and j-clamp (f).
5. Slide mount clips (g) behind wheel well.
6. Install mud flap holes #4 to #6 to factory holes using a sheet metal screw (b) and flat washer (c).
7. Using a square or other levelling tool, ensure that the mud flap is level. Tighten all fasteners, making sure the j-clamps are positioned to put pressure on the outer edge of the mud flap.
8. Repeat the procedure on the passenger side.



Please check out our YouTube channel to see an install video for this application.

