



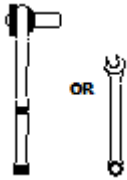
2018-C Chevy Traverse
Mud Flap Set, Front
Mounting Diagram & Instructions
Kit# GCR25F
 766815/766723

IMPORTANT:

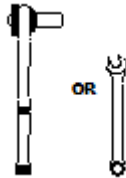
Manufacturer is not responsible for negligent use of vehicle with mud flaps installed, including over-tightening of screws and bolts causing damage to vehicle or mud flaps.



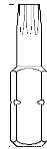
TOOLS REQUIRED-



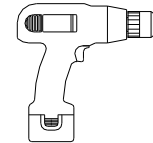
5/16" Open Wrench or
Socket Wrench



3/8" Open Wrench or
Socket Wrench



T15 Torx
Bit



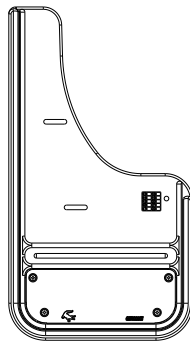
Electric or Rechargeable
Drill



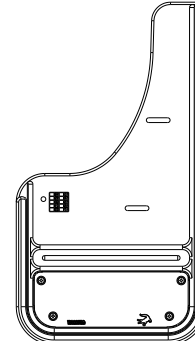
1/4" Drill
Bit

FLAPS

(1) Flap Assembly,
Front, DS
Part #766726

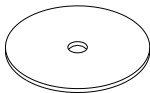


(1) Flap Assembly
Front, PS
Part #766727



PARTS BAG # 766728

a) (4) Washer, Flat
0.203" x 1.5", 18GA, SS
Part #018066



b) (4) Washer, Flat
0.203" ID x 1" OD, 18ga, SS
Part #018081



c) (2) Washer, Nylon, Blk
0.265" x 0.625" x 0.06"
Part #054071



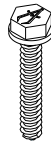
d) (2) Washer, Lock
18-8SS, Helicoil
Part #024001



e) (2) Screw, Mach.
18-8SS, 10-24 x 1, Hex Hd
Part #012022



f) (4) Bolt, Hex Flange
M4.2 x 1" Blk
Part #016041



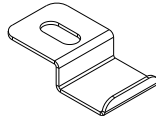
g) (2) Nut, Hex
#10-24, SS
Part #025003



h) (4) Spacer, Rubber
1/4" ID x 1" OD x 1/4" Thk
Part #080677



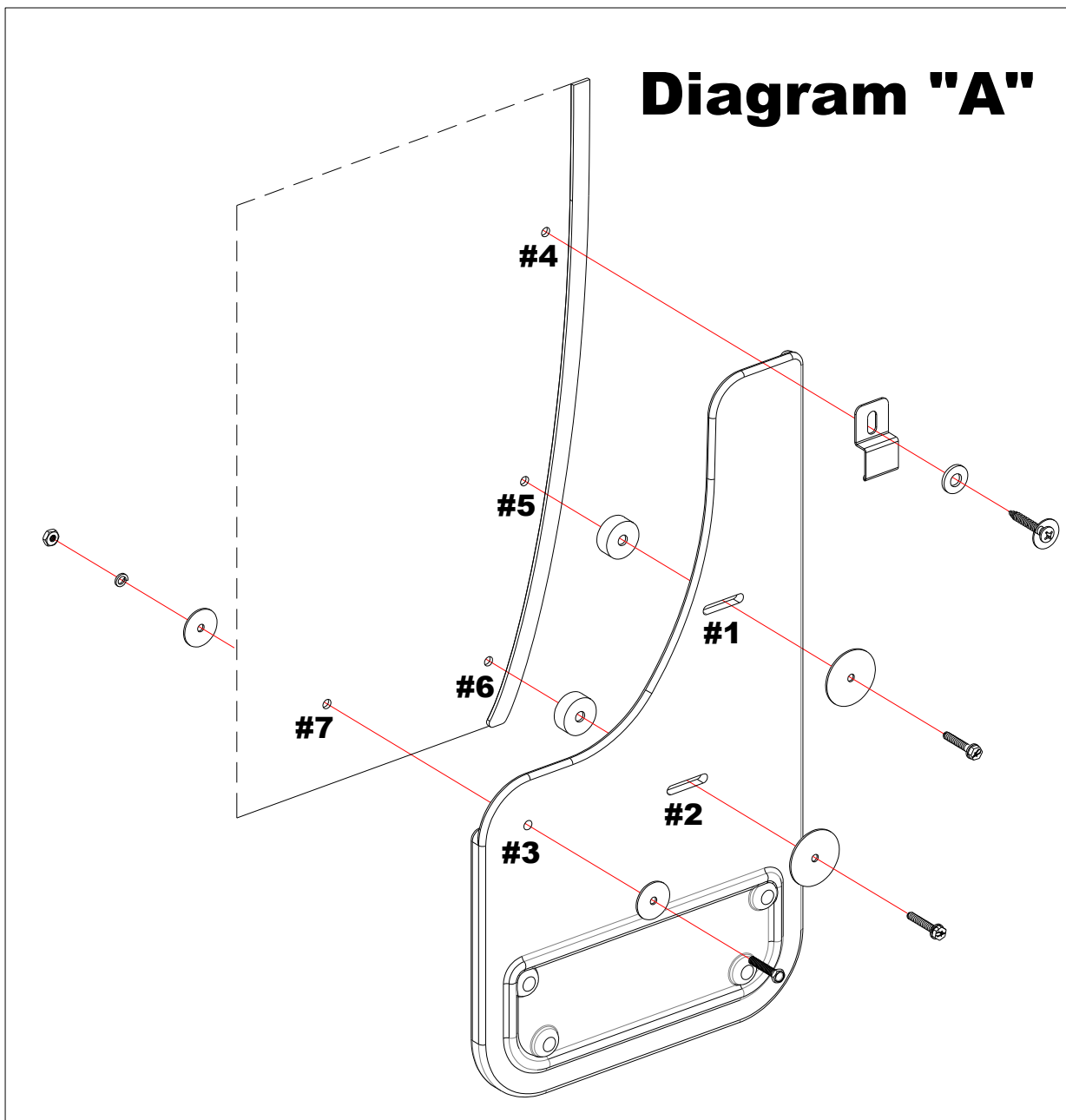
h) (2) "Z" Clip, w/lip
0.281" x 1", SS
Part #018067



INSTALLATION (For ease of installation it is suggested that the wheel be removed)

1. Before you install your Mud Flap Set, see the diagram and parts list for all necessary parts. Start on the driver's side.
2. Remove the three factory screws from the inner wheel well.
3. Secure the flap through holes #1 & #2, into factory holes #5 & #6 using a bolt (#016041), flat washer (#018066), and rubber spacer (#080677).

4. Install provided “Z” clip to upper factory hole #4 using the factory screw and supplied nylon washer (#054071). Secure the clip to the mud flap.
5. Using a bubble level or square, ensure that the mud flap is level. Viewing the vehicle from the back, the outer edge of the mud flap should appear parallel to the tires.
6. Carefully tighten all screws. Ensure that the mud flap is still level.
7. On the innermost part of the flap, drill a ¼” hole through the mud flap to create hole #3 and through liner to create hole #7.
8. Install the liner to the flap using the provided bolt (#012022), and a stainless steel washer (#018081), and secure with a stainless steel washer (#018081), a lock washer (#024001) and a hex nut (025003).
9. Repeat procedure for the passenger side.



Please check out our YouTube channel to see an install video for this application.





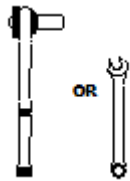
2018-C Chevy Traverse
Mud Flap Set, Rear
Mounting Diagram & Instructions
Kit# GCR25R
 766816/766729

IMPORTANT:

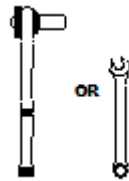
Manufacturer is not responsible for negligent use of vehicle with mud flaps installed, including over-tightening of screws and bolts causing damage to vehicle or mud flaps.



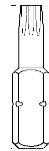
TOOLS REQUIRED-



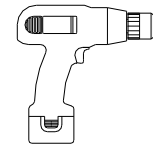
5/16" Open Wrench or
Socket Wrench



3/8" Open Wrench or
Socket Wrench



T15 Torx
Bit



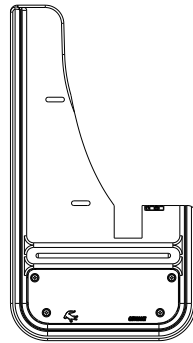
Electric or Rechargeable
Drill



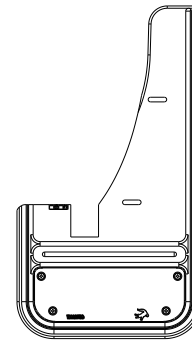
1/4" Drill
Bit

FLAPS

(1) Flap Assembly,
Front, DS
Part #766732

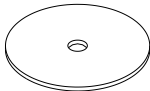


(1) Flap Assembly
Front, PS
Part #766733



PARTS BAG # 766734

a) (4) Washer, Flat
0.203" x 1.5", 18GA, SS
Part #018066



b) (4) Washer, Flat
0.203" ID x 1" OD, 18ga, SS
Part #018081



c) (2) Washer, Nylon, Blk
0.265" x 0.625" x 0.06"
Part #054071



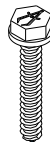
d) (2) Washer, Lock
18-8SS, Helicoil
Part #024001



e) (2) Screw, Mach.
18-8SS, 10-24x1, Hex Hd
Part #012022



f) (4) Bolt, Hex Flange
M4.2 x 1" Blk
Part #016041



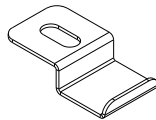
g) (2) Nut, Hex
#10-24, SS
Part #025003



h) (6) Spacer, Rubber
1/4" ID x 1" OD x 1/4" Thk
Part #080677



h) (2) "Z" Clip, w/lip
0.281" x 1", SS
Part #018067

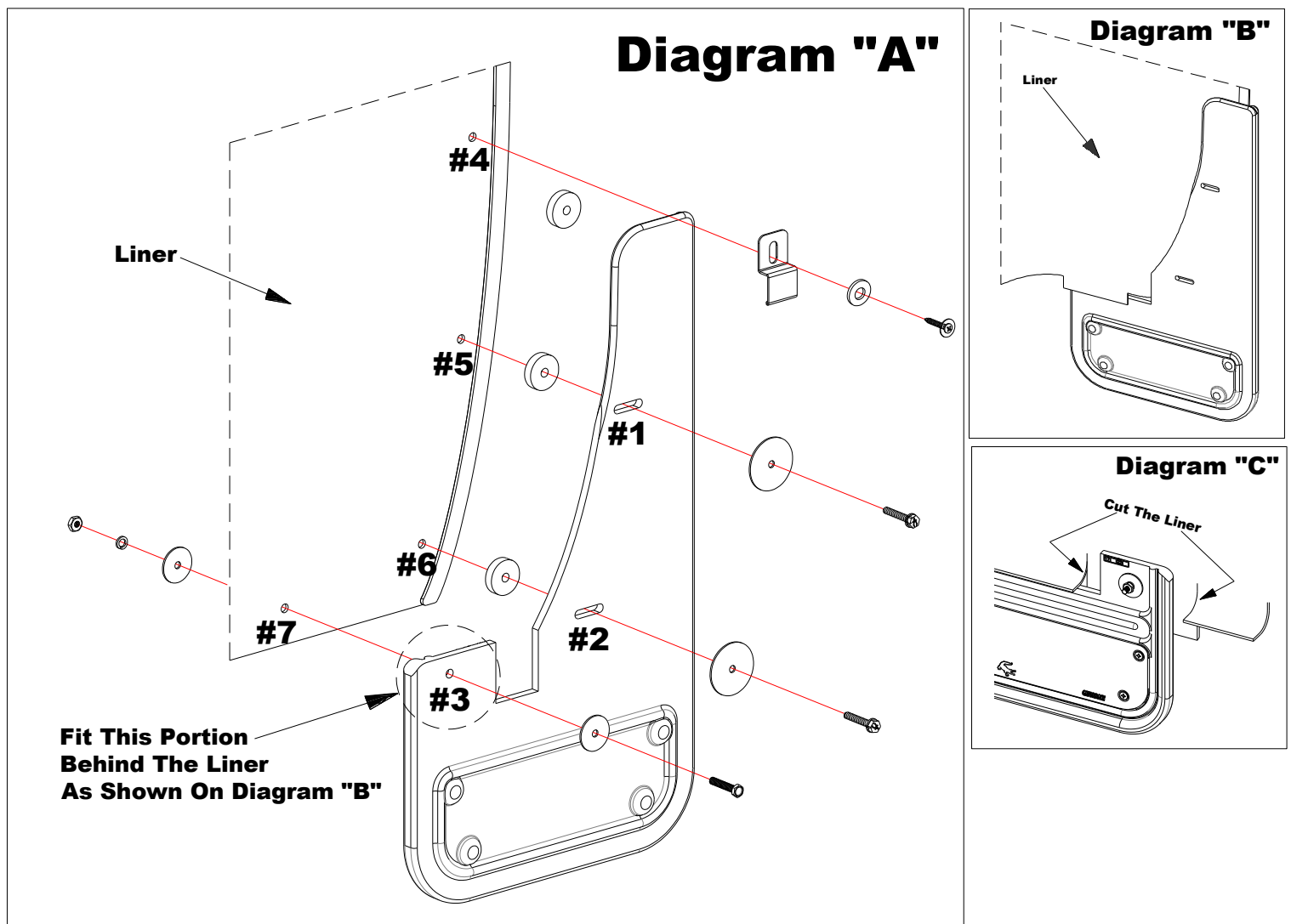


INSTALLATION (For ease of installation it is suggested that the wheel be removed)

- Before you install your Mud Flap Set, see the diagram and parts list for all necessary parts. Start on the driver's side.
- Remove the three factory screws from the inner wheel well.
- Secure the flap through holes #1 & #2 into factory holes #5 & #6, using a bolt (#016041), flat washer (#018066), and rubber spacer (#080677).



4. Ensure that the innermost part of the flap tucks behind the liner as shown in Diagram "B". Loosely secure at this point.
5. Install provided "Z" clip to upper factory hole #4 using the factory screw, and supplied nylon washer (#054071). Before tightening, place the rubber washer behind the flap as shown. Secure the clip to the mud flap.
6. Using a bubble level or square, ensure that the mud flap is level. Viewing the vehicle from the back, the outer edge of the mud flap should appear parallel to the tires.
7. Carefully tighten all screws. Ensure that the mud flap is still level.
8. Cut liner to allow flap to sit flush against the back of the liner. (See Diagram "C")
8. On the innermost part of the flap, drill a ¼" hole through mud flap to create hole #3 and through liner to create hole #7.
9. Install the liner to the flap using the provided bolt (#012022), and a stainless steel washer (#018081), and secure with a stainless steel washer (#018081), a lock washer (#024001) and a hex nut (025003).
10. Repeat procedure for the passenger side.



Please check out our YouTube channel to see an install video for this application.

