



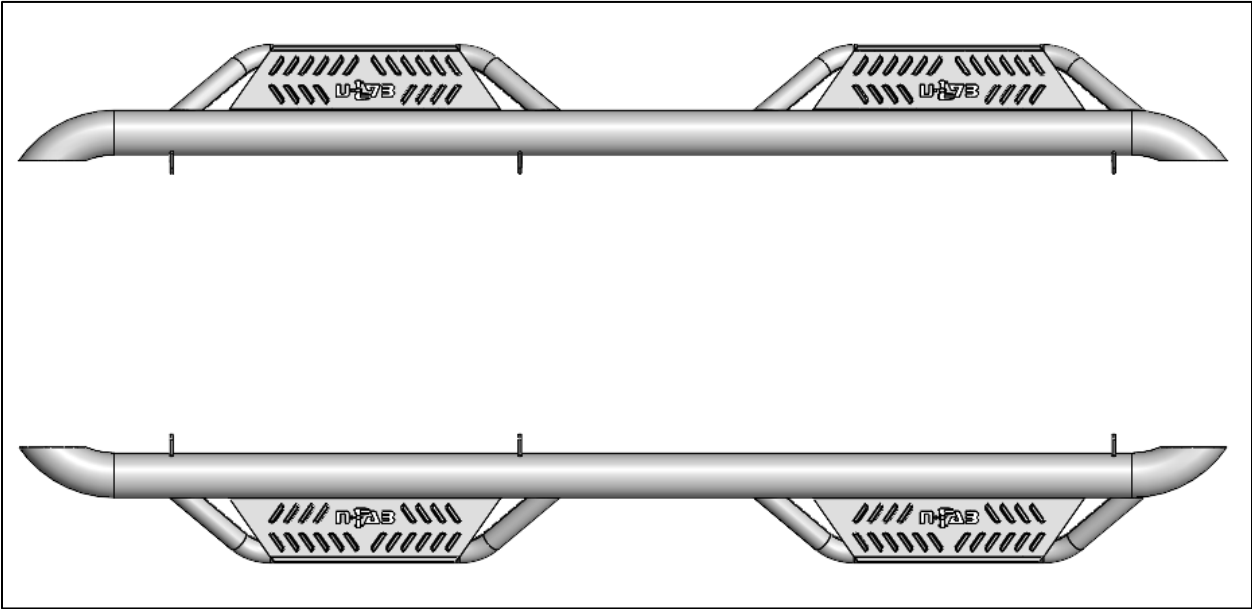
I-SHEET NUMBER: INST-00209
 PART NUMBER: HPG1583CC-TX
 PRODUCT: PODIUM HOOP STEP
 APPLICATION: COLORADO/CANYON

HARDWARE DESCRIPTION		QTY.
HWKT-00008X		
FLBW-00894X	M8-1.25 X 30MM CLASS 8.8 FLANGED CAP SCREW	12
CLIP - 00643X	M8-1.25 X 20MM-BARREL CLIP	12
	10mmx25mm carriage bolt	12
	10mm Hex flanged nut	12



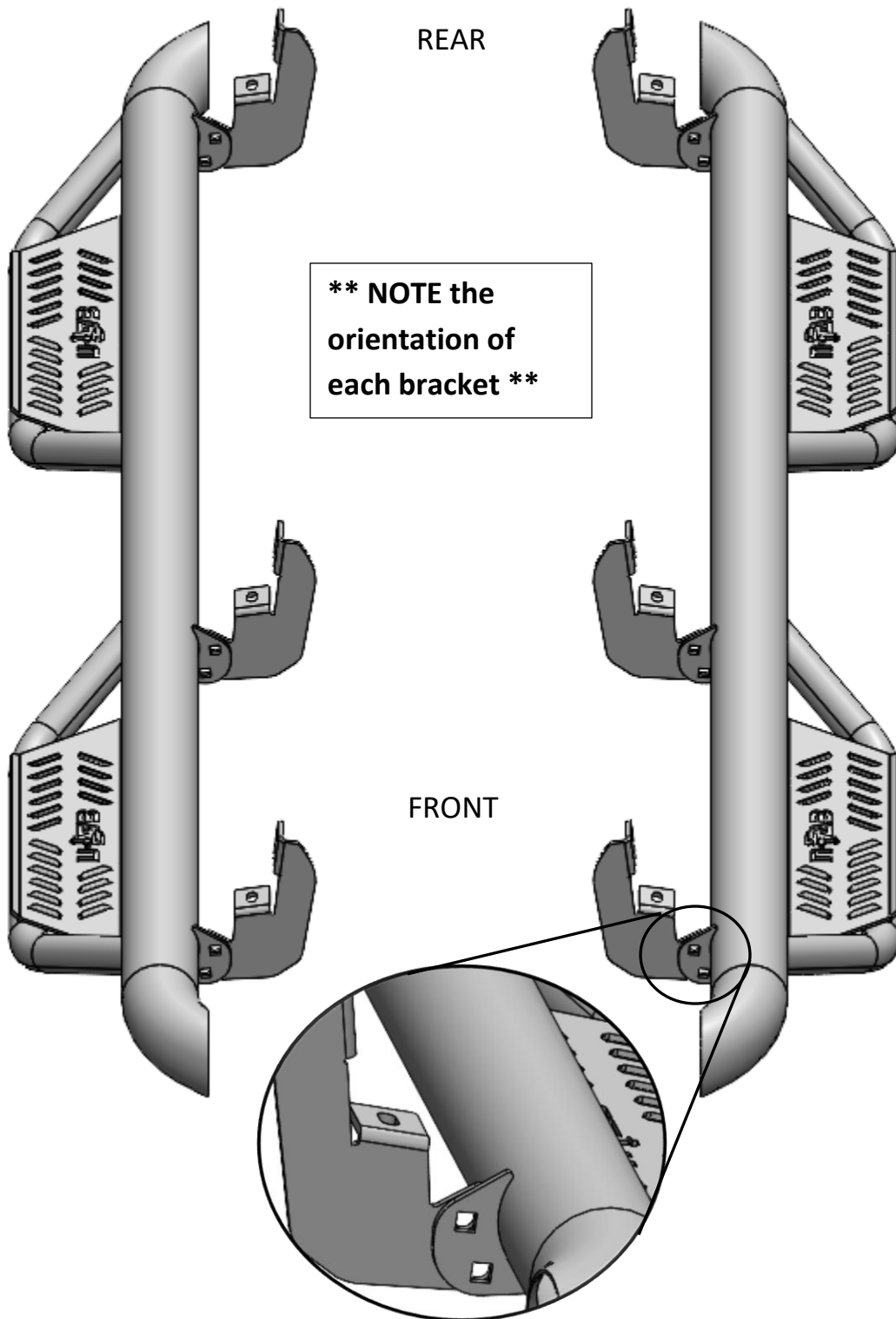
PARTS INCLUDED	QTY
DRIVER SIDE	1
PASSENGER SIDE	1
Mounting bracket	6

Step 1: Identify driver side step.



Step 2. Install the (x6) mounting brackets to each attachment point on the main tube using the supplied M10x25 carriage bolts, M10 hex nuts and leave loose for now.

****** NOTE: The brackets will attach to the backside of the mounting flange with the threaded end of the carriage bolt facing towards the REAR of the step. ******



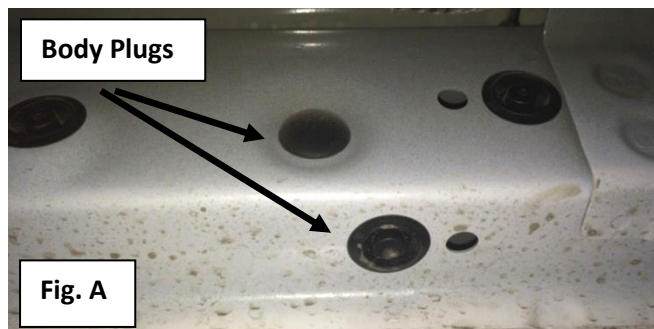
NOTE: Depending on application, all hardware may not be used.

Step 3: Measure the distance between each mounting brackets on the step starting with the front bracket.

Step 4: Locate the rubber body plugs on the underside of the body. There will be 4 sections of 2 plugs each. One near the top of the body and one near the bottom.

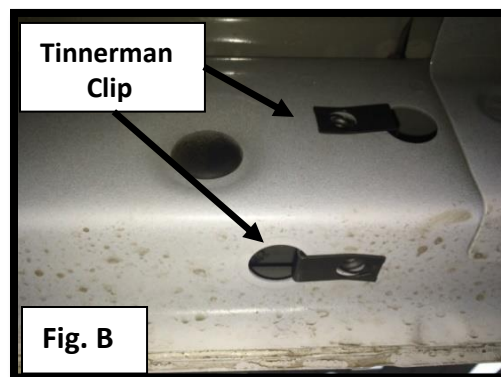
(**NOTE:** Some applications use three brackets per side and some use 4 brackets per side.)

Fig. A



Step 5: Using the measurement from the brackets, only remove the rubber plugs from the sections you will need to mount the step. (**NOTE:** Start with the first section nearest to the front of the vehicle.)

Step 6: Insert one 8mm x 1 ¼' Tinnerman clip into each mounting hole by sliding the clip from the large hole and lining up the threaded part with the smaller hole. Make sure the flat side of the clip faces toward the outside of the body. **Fig. B**



Step 7: Carefully raise the nerf-step into position aligning all brackets with the three mounting holes. Insert all six M8 X 25mm HC bolts and hand tighten.

Step 8: Starting with the rear bracket, adjust step as close to the body as possible without making contact and torque both bolts tight. Then repeat same step with the front bracket and the center bracket.

Step 9: After final adjustment, tighten all three brackets at the main tube.

