



## Installation Instructions

For easy installation, you will need to:

- READ ALL the instructions completely before beginning.
- Have the necessary tools available

Tools required:

- 3/4" wrenches/sockets
- 1/2" wrenches/sockets
- 1 - C-clamp

**SAFETY NOTICE:** WE RECOMMEND THAT THIS INSTALLATION BE DONE BY A PROFESSIONAL OR PERSONS WITH SOUND MECHANICAL KNOWLEDGE.

**SUPERSPRINGS** are designed to work in conjunction with original equipment (factory) springs only. Please consult SuperSprings factory (866-898-0720) if original springs have been replaced with an after-market product.

**WARNING:** These instructions are meant to be a general guide for installing SuperSprings. SuperSprings International assumes no liability for the actual installation process. Consumers should apply common automotive safety practices when raising and working on any vehicles. Do NOT put yourself in a position where if the vehicle should move unexpectedly, you may be seriously hurt. SuperSprings are designed to improve vehicle carrying capacity and road handling. Do NOT load any vehicle beyond the manufacturer's specifications.

### LIMITED WARRANTY

See separate warranty information page.

SuperSprings International Corporation  
505 Maple Avenue, Carpinteria, CA 93013  
www.supersprings.com

Technical Support: 866-898-0720  
Email: chad@supersprings.com  
gerry@supersprings.com

***Prior to installation ensure the following steps have been taken:***

***Vehicle must be on level solid surface.***

***Parking brake ON - Ignition OFF.***

***Place blocks in front and rear of the front tires to prevent the vehicle moving.***

### ***During and / or after installation***

***Ensure emergency brake cables are not touching the SuperSprings blade(s). Secure them out of the way with zip ties or by re-routing. Avoid all air conditioning lines, all fuel filler hoses and all brake lines or cables. Position the SuperSprings so there is sufficient clearance from any frame contact both horizontally and vertically. Also, where applicable, the ends (eye) of the SuperSprings must avoid contact with any factory overload spring perch or bracket.***

## Installation Instructions

### SSA43 for Ford Transit 150/250/350 Van & Cab Chassis 2015-present

#### **Step 1: Positioning the vehicle**

Vehicle must be on level solid surface. Ensure emergency brake is ON and Ignition is OFF. Place blocks in front and rear of the front tires to prevent the vehicle from moving.

#### **Step 2: Jacking up vehicle**

Jack up the vehicle and support the frame with jack stands so that the axle is hanging with tires slightly off the ground. You may remove the wheel for easier installation access but it is not required.

#### **Step 3: Attach the PSP-10 to the SuperSpring**

Attach the PSP-10 to the SuperSpring before starting installation. Slide the plated spring c-clip through the PSP-10 slot and install the assembled PSP-10 to the SuperSpring with the open end of the clip facing in the same direction as the threaded ends of the shackle bolts. Position the PSP-10 clip 19" from the center of the rear shackle bolt. (Fig. 1) Insert the supplied 5/16" bolt bolt and add the washer and nut and tighten securely. (Fig. 2)



Fig. 1



Fig. 2

#### **Step 4: Remove Shackle Bolts and Rollers:**

Using a 3/4" wrench and a 3/4" socket and ratchet, remove the bolts, nuts and roller assemblies from the front and rear of the SuperSprings and set aside. Rotate the shackles toward the center and parallel to the SuperSpring.

**Step 5: Mount the SuperSpring on top of the factory spring-plate.**

Slip the SuperSpring with attached PSP-10 through the wheel well or slide it in from behind the vehicle, positioning the PSP-10 into the trough on top of the factory spring-plate (Fig. 3) with the open end of the clip with bolt attachment toward the wheel (open end of clip away from frame). This will also ensure that the threaded ends of the shackle bolts are also toward the wheel (away from the frame).

**Check that the position of the SuperSprings ensures there is sufficient clearance from any frame contact both horizontally and vertically. Position springs shackles to provide rear rollers with  $\frac{3}{4}$ " to 1" forward clearance from any obstacles. (roller movement is toward the axle on loading) Front rollers only require  $\frac{1}{4}$ " clearance in either direction.**



Fig. 3

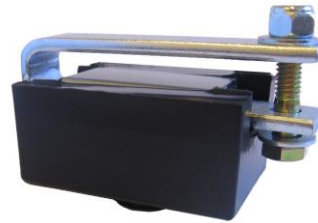


Fig. 4

Transit spring plate with center bolt (Fig. 3). Position PSP-10 (Fig. 4) on top of the plate with the bolt hole in the PSP-10 centered over the spring plate bolt.

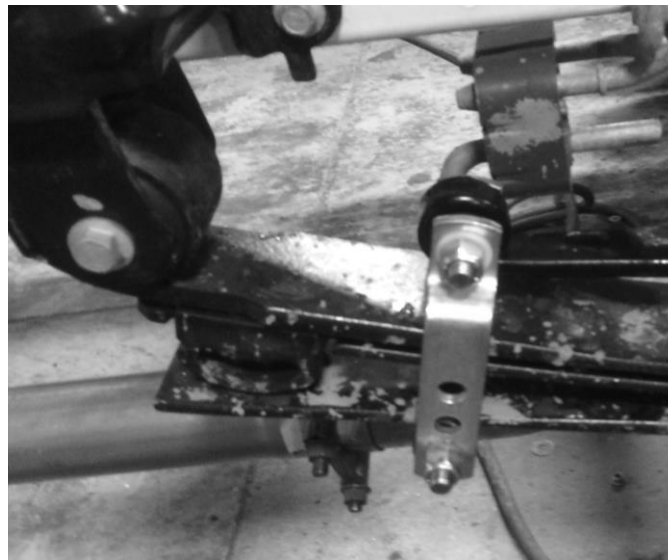


Fig. 5

**Step 6: Attach front shackle (Fig. 5)**

Rotate the front shackle legs down on both sides of the factory spring-pack. Re-install the shackle bolt, pointing towards the outside of the vehicle (away from the frame). Install poly roller spacer and steel roller through the bottom hole of the shackle legs across the underside of the bottom leaf (either two or three leaf pack suspension). Tighten the locknut securely. Ensure all A/C lines and brake cables that might be damaged by SuperSpring blades are clear.

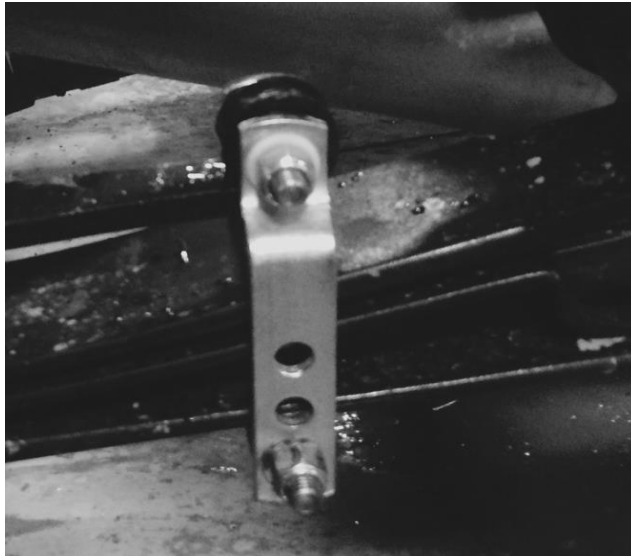


Fig. 6

**Step 7: Attach rear shackle (Fig. 6)**

Rotate the rear shackles legs down on both side of the leaf spring. Use a C-Clamp (or installation tool) and pull down the rear of the SuperSpring so the legs of the shackle straddle the factory spring-pack. Re-install the shackle bolt, spacer, roller and lock nut through the lowest hole position on the shackle legs with the threaded end pointing outward away from the frame. Tighten the locking nut securely

**The top shackle bolts and nuts are torqued at the factory and should not be tightened.**

**Step 8: Lower the vehicle**

Jack up the vehicle, remove the jack stands, then lower the vehicle to the ground. Remove the blocks from front and rear of the front wheels.

**Step 9: Check final alignments**

Position springs shackles to provide rear rollers with  $\frac{3}{4}$ " to 1" forward clearance from any obstacles. (roller movement is toward the axle on loading) Front rollers only require  $\frac{1}{4}$ " clearance in either direction.

**Step 10:** Repeat the same process on the other wheel.

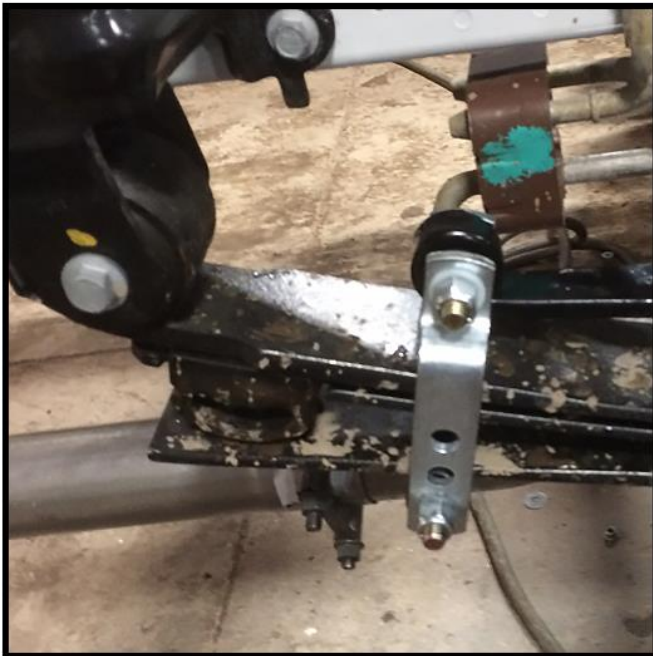
**Step 11:** Recheck installation to ensure that all a/c lines, brake cables and truck frame will not interfere with the vertical travel of the SuperSprings.

# SuperSprings®

Suspension Enhancement  
Ford Transit 150/250/350 [2015 ~ present]  
SuperSprings Part# SSA42



Install shackle roller on underside of two and three leaf spring packs



**Front Shackle**



**Rear Shackle**

Refer to SuperSprings application guide for part selection [www.supersprings.com](http://www.supersprings.com) [Tech line #866-898-0720]  
SuperSprings enhance load carrying capability, handling & towing. Never exceed vehicle manufacturer's GVWR rating.