

INSTALLATION MANUAL

S224053

Level of Difficulty

Easy

Parts List

1	Driver / left side bar
1	Passenger / right side bar
8	Mounting bracket, universal
16	Flat washer, M8
16	Lock washer, M8
16	Hex bolt, M8
16	Flat washer, M10
16	Lock washer, M10
16	Hex bolt, M10

Tools Required

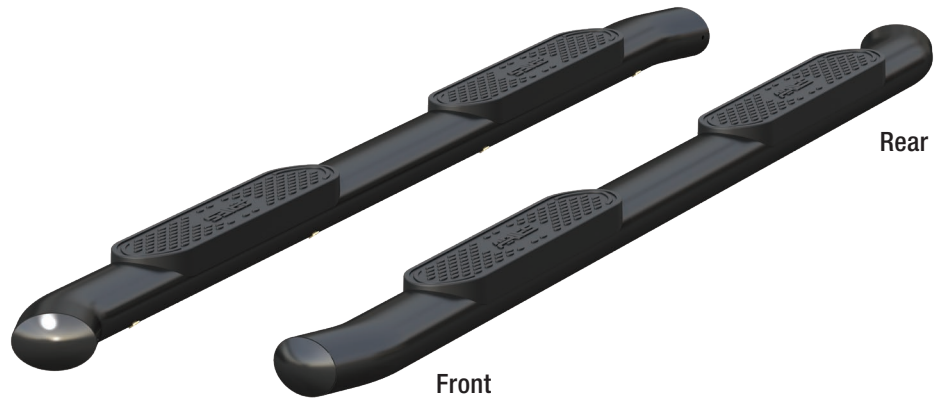
Torque wrench	Ratchet
Socket, 13mm	Flathead screwdriver
Socket, 16mm	Wrench, 16mm

Torque Specifications*

	Metric	SAE
M6 bolt	3 ft-lbs.	
M8 bolt	7 ft-lbs.	
M10 bolt	16 ft-lbs.	
M12 bolt	28 ft-lbs.	
1/4" bolt	3 ft-lbs.	
5/16" bolt	7 ft-lbs.	
3/8" bolt	16 ft-lbs.	
7/16" bolt	20 ft-lbs.	
1/2" bolt	28 ft-lbs.	

Use above torque setting unless otherwise noted

Product Photo



NOTICE

Before you begin installation, read all instructions thoroughly.

Proper tools will improve the quality of installation and reduce the time required.

To help prevent damage to the product or vehicle, refer to the specified torque specifications when securing hardware during the installation process.

Maintenance

To protect the product, wax after installing. Regular waxing is recommended to add a protective layer over the finish. Do not use any type of polish or wax that may contain abrasives that could damage the finish.

For polished, gloss and other smooth finishes, polish may be used to clear small scratches and scuffs on the finish.

Mild automotive detergent may be used to clean the product. Do not use dish detergent, abrasive cleaners, abrasive pads, wire brushes or other similar products that may damage the finish.

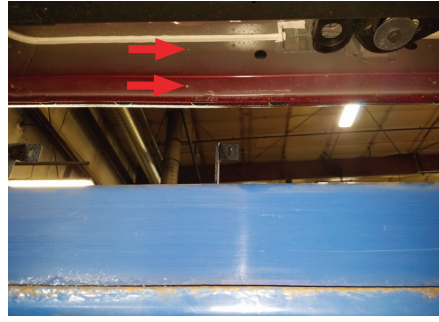
Product Registration and Warranty

CURT Group stands behind our products with industry-leading warranties.

Provide feedback and help us to improve our products by registering your purchase at: warranty.curtgroup.com/surveys

Step 1

Starting on the driver side, locate the four pre-threaded mounting points along the rocker panel of the vehicle.



Step 2

Loosely secure each bracket to the vehicle mounting points using two M8 hex bolts, flat washers and lock washers.



Step 3

Place the 4" side bar onto the brackets and align the holes in the side bar with the holes in the brackets.

Secure the side bar to the brackets using two M10 hex bolts, flat washers and lock washers for each bracket.

Level the side bar and tighten all hardware to the recommended torque specifications listed in the table on the first page.



Step 4

Repeat steps 1 through 3 on the passenger side of the vehicle.

Congratulations on the installation of your new ARIES 4" oval side bars.

With the side bars installed, periodic inspections should be performed to ensure all mounting hardware remains tight.

To protect your investment, see the 'Notes and Maintenance' section on the first page of this instruction manual.

