

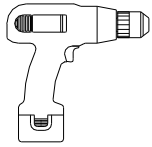


2020 Chev Silverado HD
Mud Flap Set, Front
Mounting Diagram & Instructions
Kit# GCR202F

IMPORTANT:

Manufacturer is not responsible for negligent use of vehicle with mud flaps installed, including over-tightening of screws and bolts causing damage to vehicle or mud flaps.

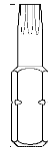
TOOLS REQUIRED-



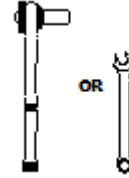
Electric or Rechargeable Drill



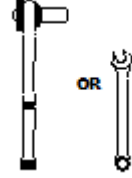
1/4" Drill Bit



T15 Torx Bit

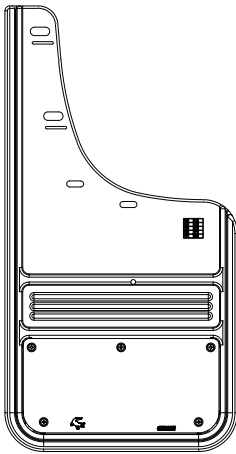


7/16" Open Wrench or Socket Wrench

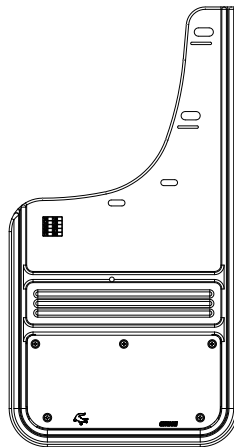


1/4" Open Wrench or Socket Wrench

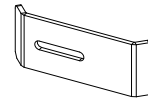
FLAPS AND BRACKETS



(1) Flap Assy Front, DS



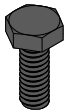
(1) Flap Assy Front, PS



(2) Strip Washer Part #766960

PARTS BAG # 768377

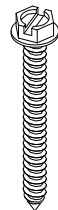
a) (4) Capscrew, SS 1/4"-20UNC x 5/8" Part #014071



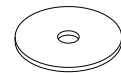
b) (6) Screw, Sheet Metal, Blk Ox. 1/4" Hex Washer Head, #8-18x1" Part # 016055



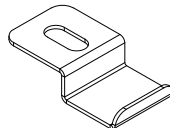
c) (2) Screw, Sheet Metal, Blk Ox. 1/4" Hex Washer Head, #18-15x1.5" Part #016053



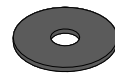
d) (2) Washer, Flat 0.203" x 1" x 18g SS Part #018018



e) (2) "Z" Bracket w/lip 0.281" x 1" x 18g SS Part #018067



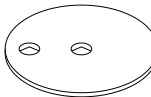
f) (4) Washer, Flat 0.281" x 1", 18g, SS, oxid. Part #018069



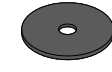
g) (4) Washer, Flat 0.203" x 1", 18g, SS, oxid Part #018070



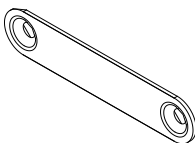
h) (2) Washer, Offset 0.281" x 1.5" x 18g, SS, Oxid. Part #018080



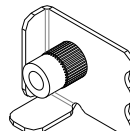
i) (2) Washer, Nylon, Blk 0.203" x 0.885" x 0.062" Part #054080



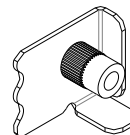
j) (2) Washer Plate #10, Screw, 2 Holes Part #759549



k) (2) Mount Clip, DS w/Clinch Nut Part # 768157

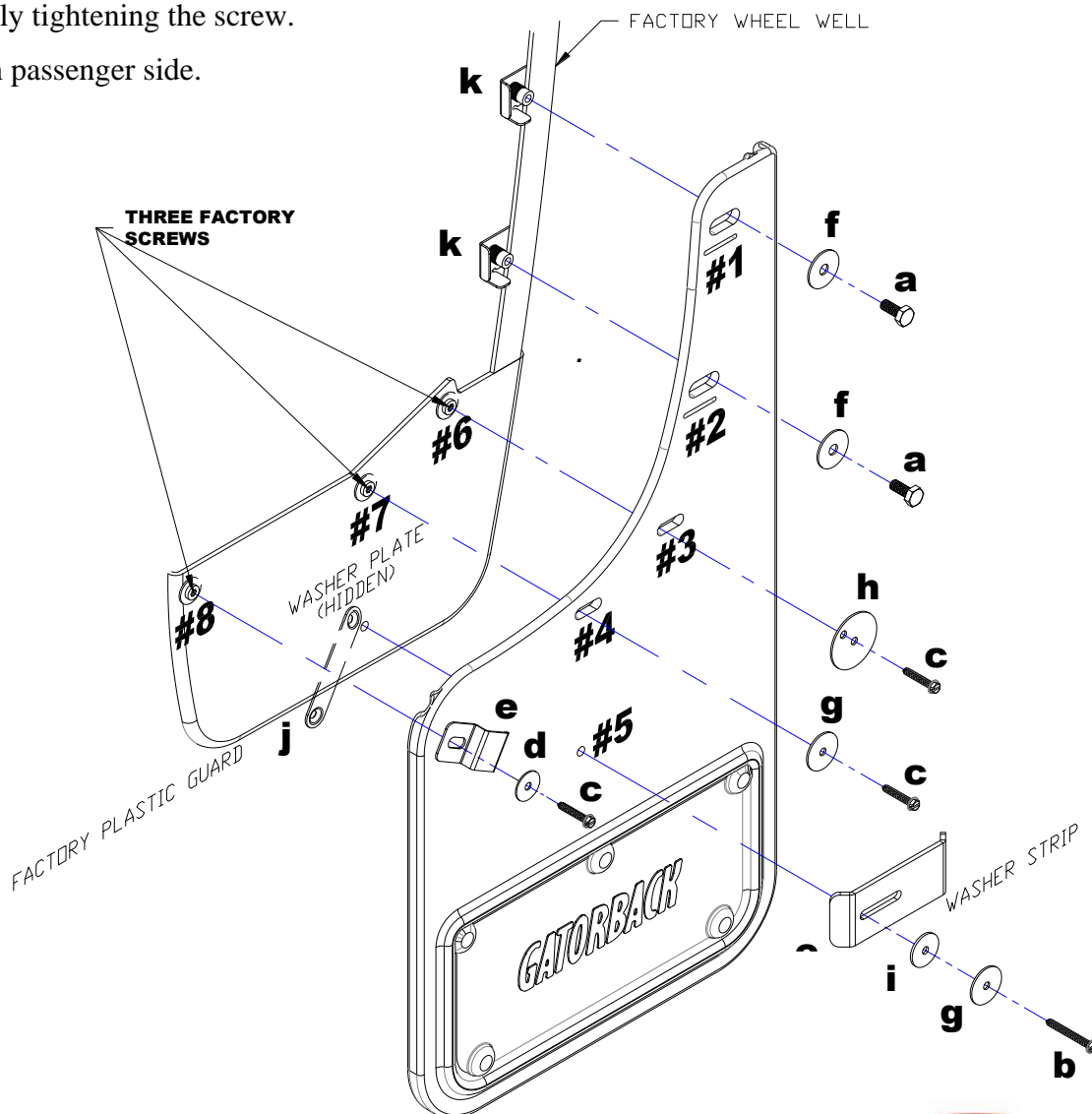


l) (2) Mount Clip, PS w/Clinch Nut Part #768158



INSTALLATION *(For ease of installation it is suggested that the wheel be removed)*

1. Before you install your Mud Flap Set, see the diagram and parts list for all necessary parts. Start on the driver's side.
2. Remove three factory screws from plastic guard holes #6 to #8.
3. Loosely install mount clips (k) on mud flap holes #1 & #2 using a cap screw (a) and flat washer (f).
4. Loosely install mud flap through hole #3 to factory hole #6 using a sheet metal screw (c) and offset washer (h).
5. Slide mount clips (k) behind the lip of the fender to secure.
6. Loosely install mud flap through hole #4 into factory hole #7 using a sheet metal screw (c), and flat washer (g).
7. Using a bubble level or other levelling tool, ensure that the mud flap is level. Tighten fasteners starting with #4 then #3, #2, and #1.
8. Install "Z" bracket (e) over the mud flap and into factory hole #8 using a sheet metal screw (c) and flat washer (d).
9. Using a ¼" drill bit, drill a hole into the factory plastic guard through mud flap hole #5.
10. Position the washer plate underneath the slotted hole and inside the factory plastic guard where the hole was previously drilled in step #9, and secure the mud flap through the washer plate using a sheet metal screw (b), flat washer (g), nylon washer (i) and strip washer. Ensure the washer plate is tucked inside the factory plastic guard before fully tightening the screw.
11. Repeat on passenger side.



Please check out our YouTube channel to see an install video for this application.



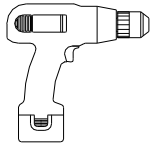


2020 Chev Silverado HD
Mud Flap Set, Rear
Mounting Diagram & Instructions
Kit# GCR202R

IMPORTANT:

Manufacturer is not responsible for negligent use of vehicle with mud flaps installed, including over-tightening of screws and bolts causing damage to vehicle or mud flaps.

TOOLS REQUIRED-



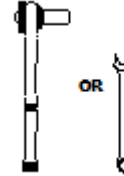
Electric or Rechargeable Drill



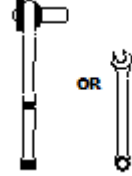
1/4" Drill Bit



T15 Torx Bit

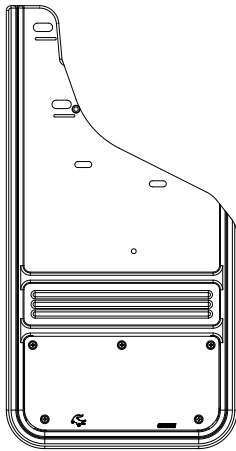


7/16" Open Wrench or Socket Wrench

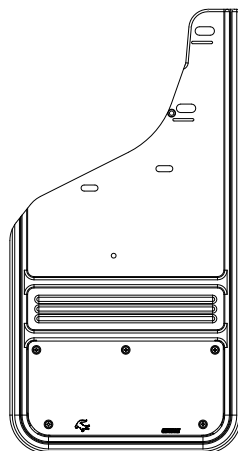


1/4" Open Wrench or Socket Wrench

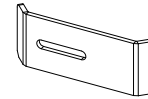
FLAPS AND BRACKETS



(1) Flap Assy Rear, DS



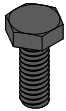
(1) Flap Assy Rear, PS



(2) Strip Washer Part #766960

PARTS BAG # 768377

a) (4) Capscrew, SS 1/4"-20UNC x 5/8" Part #014071



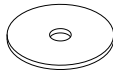
b) (6) Screw, Sheet Metal, Blk Ox. 1/4" Hex Washer Head, #8-18x1" Part # 016055



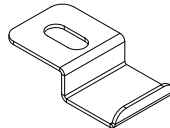
c) (2) Screw, Sheet Metal, Blk Ox. 1/4" Hex Washer Head, #18-15x1.5" Part #016053



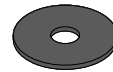
d) (2) Washer, Flat 0.203" x 1" x 18g SS Part #018018



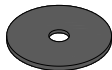
e) (2) "Z" Bracket w/lip 0.281" x 1" x 18g SS Part #018067



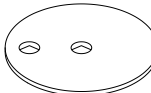
f) (4) Washer, Flat 0.281" x 1", 18g, SS, oxid. Part #018069



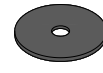
g) (4) Washer, Flat 0.203" x 1", 18g, SS, oxid Part #018070



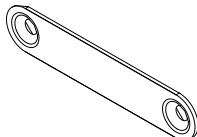
h) (2) Washer, Offset 0.281" x 1.5" x 18g, SS, Oxid. Part #018080



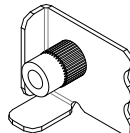
i) (2) Washer, Nylon, Blk 0.203" x 0.885" x 0.062" Part #054080



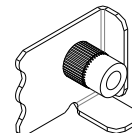
j) (2) Washer Plate #10, Screw, 2 Holes Part #759549



k) (2) Mount Clip, DS w/Clinch Nut Part # 768157

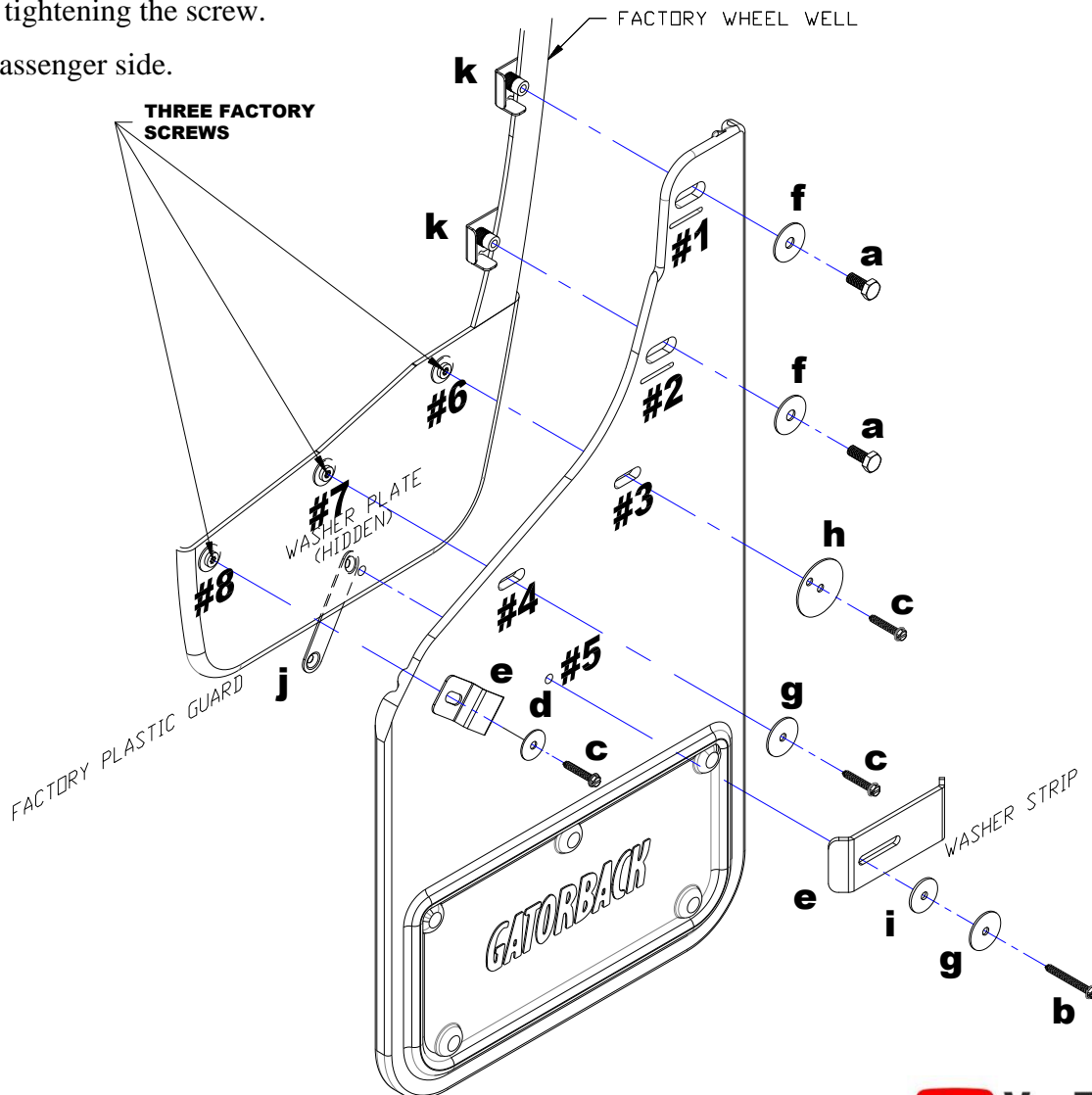


l) (2) Mount Clip, PS w/Clinch Nut Part #768158



INSTALLATION *(For ease of installation it is suggested that the wheel be removed)*

1. Before you install your Mud Flap Set, see the diagram and parts list for all necessary parts. Start on the driver's side.
2. Remove three factory screws from plastic guard holes #6 to #8.
3. Loosely install mount clips (k) on mud flap holes #1 & #2 using a cap screw (a) and flat washer (f).
4. Loosely install mud flap through hole #3 to factory hole #6 using a sheet metal screw (c) and offset washer (h).
5. Slide mount clips (k) behind the lip of the fender to secure.
6. Loosely install mud flap through hole #4 into factory hole #7 using a sheet metal screw (c), and flat washer (g).
7. Using a bubble level or other levelling tool, ensure that the mud flap is level. Tighten fasteners starting with #4 then #3, #2, and #1.
8. Install "Z" bracket (e) over the mud flap and into factory hole #8 using a sheet metal screw (c) and flat washer (d).
9. Using a 1/4" drill bit, drill a hole into the factory plastic guard through mud flap hole #5.
10. Position the washer plate underneath the slotted hole and inside the factory plastic guard where the hole was previously drilled in step #9, and secure the mud flap through the washer plate using a sheet metal screw (b), flat washer (g), nylon washer (i) and strip washer. Ensure the washer plate is tucked inside the factory plastic guard before fully tightening the screw.
11. Repeat on passenger side.



Please check out our YouTube channel to see an install video for this application.

