



AUTOMOTIVE PRODUCTS,

# INSTALLATION INSTRUCTIONS

## HDX GRILLE GUARD

### APPLICATION:

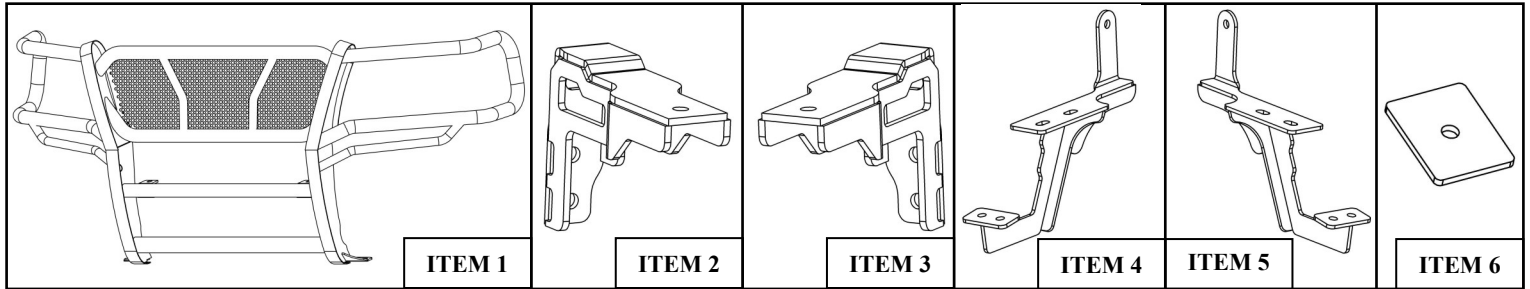
2004-2008 Ford F-150

### PART NUMBER:

57-2010, 57-2015

ITEM	QUANTITY	DESCRIPTION	TOOLS NEEDED
1	1	GRILLE GUARD	18MM SOCKET
2,3	2	UPPER MOUNTING BRACKETS, DRIVER (2) AND PASSENGER (3)	RATCHET
4,5	2	LOWER MOUNTING BRACKETS, DRIVER (4) AND PASSENGER (5)	TORQUE WRENCH
6	2	SUPPORT PLATE	
7	8	M12 HEX HEAD BOLTS	
8	2	M12 STUD PLATES	
9	6	M12 HEX NUTS	
10	10	M12 LOCK WASHERS	
11	10	LARGE M12 FLAT WASHERS	
12	4	SMALL M12 FLAT WASHERS	
13	2	M12 NUT PLATES	
14	6	M12 HEX HEAD BOLTS (BLACK OR RAW STAINLESS)	
15	12	M12 FLAT WASHERS (BLACK OR RAW STAINLESS)	
16	6	M12 LOCK WASHERS (BLACK OR RAW STAINLESS)	
17	6	M12 HEX NUTS (BLACK OR RAW STAINLESS)	
18	2	PLASTIC RETAINERS	

**ANTI-SEIZE LUBRICANT MUST BE USED ON ALL STAINLESS STEEL FASTENERS TO PREVENT THREAD DAMAGE AND GALLING**



### PROCEDURE

1. Remove contents from box, verify if all parts listed are present and free from damage. Carefully read and understand all instructions before attempting installation.  
**Failure to identify damage before installation could lead to a rejection of any claim.**
2. Starting from the front of the vehicle remove the factory hardware that mount the tow hook to the frame. Once the tow hooks are removed set them aside, they will be reinstalled on the vehicle (if your vehicle is not equipped with tow hooks skip this step) (**Figure 1**).



Westin Automotive Products, Inc.  
320 W. Covina Blvd  
San Dimas, Ca. 91773

3. Remove the factory nut plate that is used to install the tow hooks and replace them with the (2) M12 nut plates that are in the hardware kit. Starting at the drivers side take the lower mounting brackets and align it with the nut plate, attach the bracket to the nut plates using (2) M12 hex head bolts, (2) M12 lock washers, and (2) large M12 flat washers (**Note** : If vehicle is equipped with tow hooks and you would like to re use them place them over the lower mounting bracket then attach as stated previously) (**Figure 2**) . Locate the factory hole on the outside of the frame rail and insert (1) M12 stud plate into the frame, hold the stud plate in place by threading (1) plastic retainer onto the stud (**Figure 3**). Attach the lower mounting bracket to the stud plate using (1) large M12 flat washer, (1) M12 lock washer, and (1) M12 hex nut. Do not fully tighten at this time. Repeat step 3 for passenger side.
4. Next move to the upper opening in the bumper and remove the factory hardware shown in (**Figure 4 and 5**) **Note:** when the nut is removed there is a metal locking washer on the bolt, the bolt must be pried free to be removed. Once removed align the drivers side upper mounting bracket to the existing holes in the frame. Before attaching the upper mounting brackets to the frame for the upper mounting hole a support plate must be placed behind the frame before being attached (**Figure 5**) ( For 2004–05 model years the bracket will attach to the frame with the upper mounting hole and middle mounting holes in the bracket **NOTE:** Drilling will be required to open middle mount hole on the frame into a slot by approximately 1/2". For 2006-08 model years the bracket will attach to the frame using the upper and bottom mounting holes in the bracket). Attach the upper mounting bracket to the frame using (2) M12 hex head bolts (2) small M12 flat washers, (2) large M12 flat washers, (2) M12 lock washers, and (2) M12 hex nuts. Repeat this step for the passenger side. Do not fully tighten at this time. (**Figure 6**)
5. With assistance take the grille guard and align it with the mounting brackets. Attach the grille guard to the mounting brackets using (6) M12 hex head bolts (stainless), (12) M12 flat washers (stainless), (6) M12 lock washers (stainless), and (6) M12 hex nuts (stainless). Do not fully tighten at this time. (**Figure 7 and 8**)
6. Align and adjust grill guard as needed then tighten all hardware at this time. Torque all M12 hardware to 55 ft lbs.



Figure 1

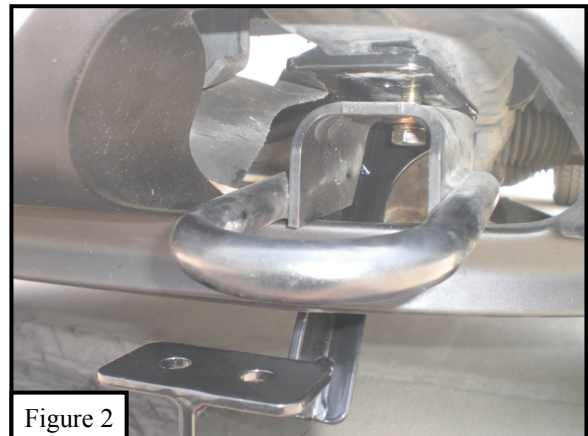


Figure 2



Figure 3

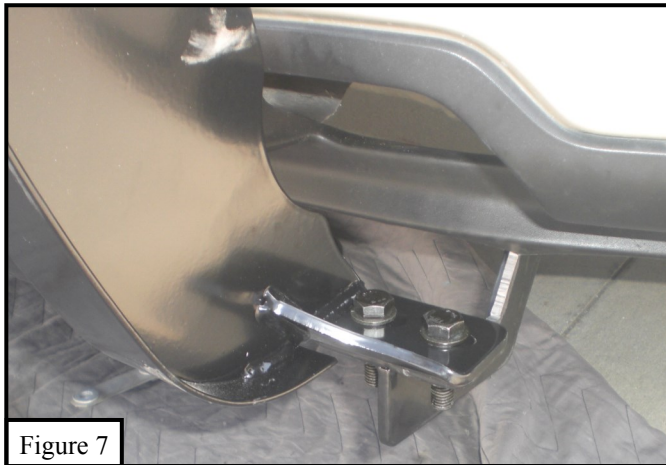
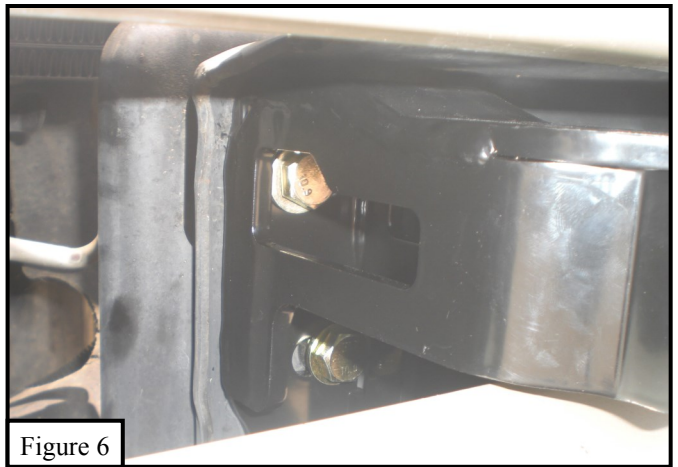
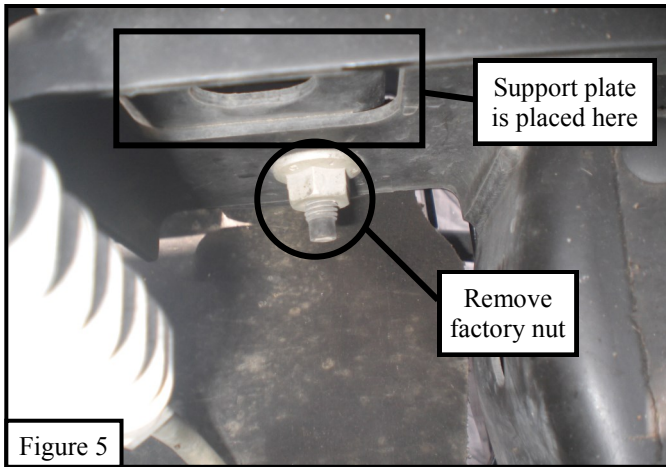


Figure 4



Westin Automotive Products, Inc.  
320 W. Covina Blvd  
San Dimas, Ca. 91773

Thank you for choosing Westin products  
for additional installation assistance please call  
Customer Service (800) 793-7846



#### CARE INSTRUCTIONS

- REGULAR WAXING IS RECOMMENDED. DO NOT USE ANY TYPE OF POLISH OR WAX THAT MAY CONTAIN ABRASIVES.
- STAINLESS STEEL PRODUCTS CAN BE CLEANED WITH MILD SOAP AND WATER. STAINLESS STEEL POLISH SHOULD BE USED TO POLISH SMALL SCRATCHES.
- GLOSS BLACK FINISHES SHOULD BE CLEANED WITH MILD SOAP AND WATER.



Westin Automotive Products, Inc.  
320 W. Covina Blvd  
San Dimas, Ca. 91773

Thank you for choosing Westin products  
for additional installation assistance please call  
Customer Service (800) 793-7846  
[www.westinautomotive.com](http://www.westinautomotive.com)

# Westin

SIGNATURE OF QUALITY

AUTOMOTIVE PRODUCTS, INC.



## WARNING



Failure to follow these instructions could lead to death, personal injury, and / or property damage.

### FASTENERS:

All Westin supplied fasteners must be utilized and installed in accordance with the installation instructions and apply torque to the specifications as defined. **DOUBLE CHECK ALL FASTENERS BEFORE INITIAL USE, AND PERIODICALLY IN THE FUTURE TO ENSURE PROPER FUNCTION AND SAFETY.**

### DRILLING:

Most Westin products do not require drilling for installation. If drilling is defined as required, use caution when drilling a vehicle. **FAILURE TO REVIEW AN AREA TO BE DRILLED MAY RESULT IN PERSONAL INJURY AND/OR INJURY TO OTHERS AS WELL AS VEHICLE DAMAGE.**

### EYE PROTECTION:

**ALWAYS WEAR SAFETY GLASSES OR GOGGLES DURING THE INSTALLATION PROCESS TO AVOID PERSONAL INJURY.**

### MAXIMUM TOWING/CARRYING CAPACITY:

The Westin Receiver Hitches will have a visible tow rating label affixed directly on the product. User should never exceed the vehicle manufacturers maximum tow and weight rating regardless of the capacity of the hitch. **FAILURE TO FOLLOW THESE GUIDELINES WILL VOID THE WESTIN WARRANTY AND MAY RESULT IN PERSONAL INJURY AND/OR INJURY TO OTHERS AS WELL AS VEHICLE DAMAGE.**

**Westin**  
SIGNATURE OF QUALITY

Westin Automotive Products, Inc.  
320 W. Covina Blvd  
San Dimas, Ca. 91773