



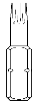
GATORBACK MUDFLAPS

2020-C Silverado/Sierra HD Dually Mud Flap Set, Rear Mounting Diagram & Instructions Kit# GCR204R

IMPORTANT:

Manufacturer is not responsible for negligent use of vehicle with mud flaps installed, including over-tightening of screws and bolts causing damage to vehicle or mud flaps.

TOOLS REQUIRED-



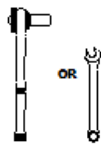
T15 Torx Bit



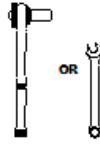
1/4" Drill Bit



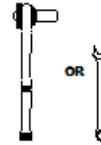
Electric or Rechargeable Drill



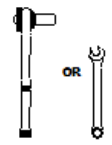
7/16" Open Wrench or Socket Wrench



1/4" Open Wrench or Socket Wrench

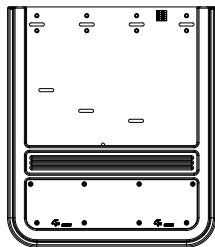


5/16" Open Wrench or Socket Wrench

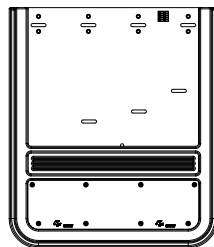


3/8" Open Wrench or Socket Wrench

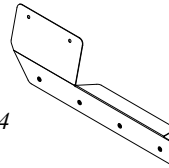
FLAPS AND BRACKETS



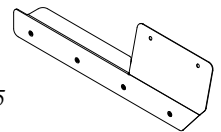
(1) Flap Assy Rear, DS



(1) Flap Assy Rear, PS



(1) Bracket Rear, DS Part #769324



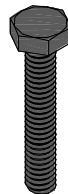
(1) Bracket Rear, PS Part #769325

PARTS BAG # 769332

a) (10) Capscrew, SS Blk Ox. 1/4"-20UNC x 3/4" Part #014070



b) (2) Capscrew, SS Blk Ox. 1/4"-20 x 1.5" Part #014074



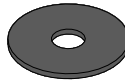
c) (2) Screw, Sheet Metal #8-15x1.5" SS Blk Ox. Part #016053



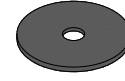
d) (6) Screw, Sheet Metal #8-18x1.25", SS Blk Ox. Part #016061



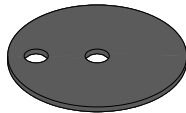
e) (10) Washer, Flat 0.281" x 1" SS Blk Ox. Part #018069



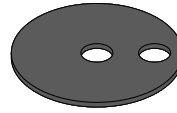
f) (2) Washer, Flat 0.203" x 1", SS Blk Ox. Part #018070



g) (6) Washer, Offset 0.203" x 1.5" SS, Blk Ox. Part #018080



h) (6) Washer, Flat 0.281" x 1.5" SS Blk Ox. Part #018087



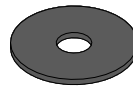
i) (4) Washer, Lock 1/4" SS Part #024000



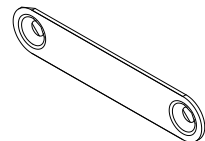
j) (4) Nut, Hex 1/4", SS Part #025000



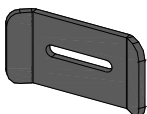
k) (4) Washer, Nylon, Blk 0.281" x 1" x 0.06" Part #054085



l) (2) Washer Plate 2 Hole Part #759549

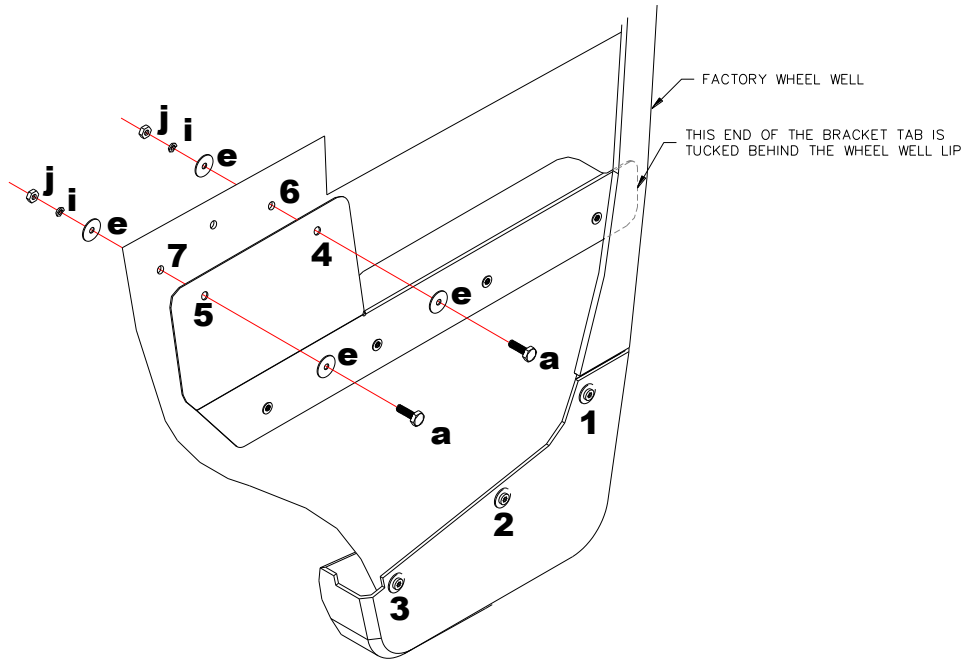


m) (4) U-Clamp, Alum. Universal Part #767416

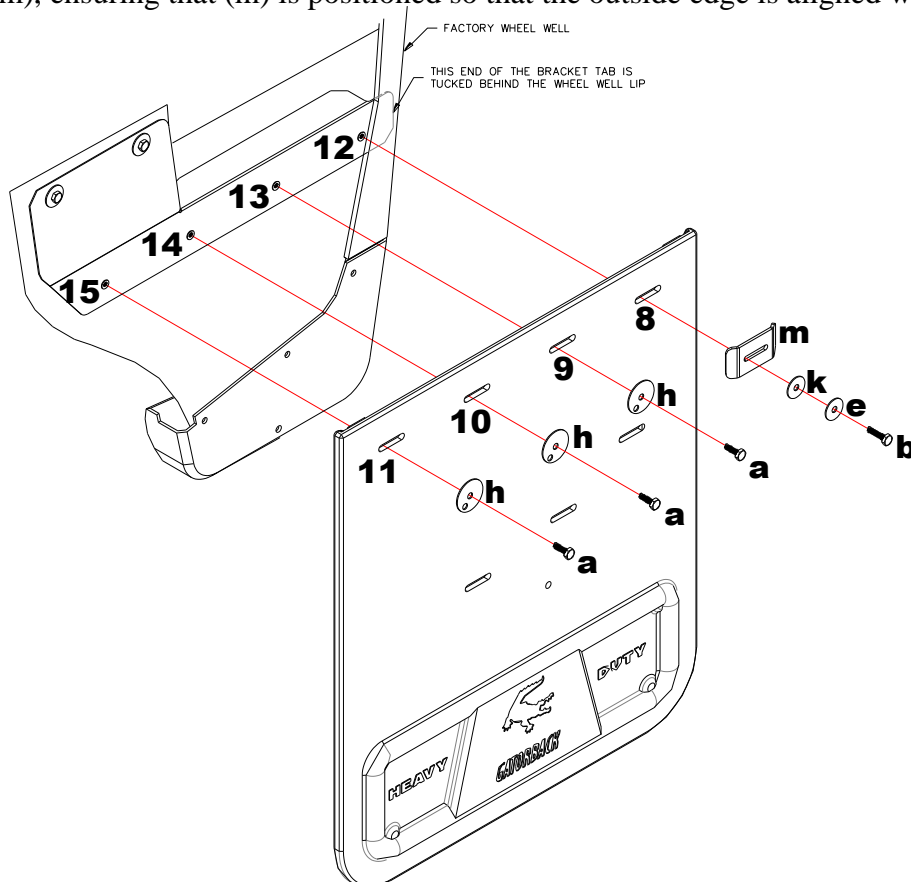


INSTALLATION *(For ease of installation it is suggested that the wheel be removed)*

1. Before you install your Mud Flap Set, see the diagram and parts list for all necessary parts. Start on the driver's side.
2. Remove the 3 factory screws from holes #1 to #3 and discard.
3. Install the bracket between the wheel lip and the flare and loosely secure bracket holes #4 & #5 to factory holes #6 & #7 using a capscrew (a) and flat washer (e) and secure from behind using a flat washer (e), lock washer (i), and hex nut (j).



4. Loosely install mud flap holes #9 to #11 to bracket holes #13 to #15 using a capscrew (a) and flat washer (h).
5. Loosely install outside mud flap hole #8 to bracket hole #12 using a capscrew (b), flat washer (e), nylon washer (k), and u-clamp (m), ensuring that (m) is positioned so that the outside edge is aligned with the outside of the flare.



6. Loosely install center mud flap hole #17 into factory hole #20 using a sheet metal screw (d) and offset flat washer (g) installed through center hole.
7. Loosely install inside mud flap hole #18 into factory hole #21 using a sheet metal screw (d) and offset washer (g) installed through outside hole with washer facing the outside edge of the flap.
8. Loosely install outside mud flap hole #16 into factory hole #19 using a sheet metal screw (d) and offset washer (g) installed through the outside hole with the washer facing the outside edge of the flap.
9. Using a square or other levelling tool, ensure that the flap is level
10. Carefully tighten all fasteners. Ensure that the mud flap is still level.
11. Drill a ¼" hole through mud flap hole #22 into the factory guard to create hole #23
12. Slightly bend the washer plate (l) so the pointed sides are bent lightly towards each other and install through the factory hole in the factory guard and secure to hole #22 through hole #23 and into washer plate (l) using a sheet metal screw (c), flat washer (f), nylon washer (k), and u-clamp (m), ensuring the u-clamp is aligned facing the outside edge of the mud flap.
13. Repeat on passenger side.

