



STEP 1 – PRIOR TO INSTALLATION

- A) Bushwacker only approves installing the flares according to these written instructions with the hardware provided. WARNING: Failure to install according to these instructions will invalidate the warranty. This includes, but is not limited to using alternative installation methods, hardware, or materials. DO NOT USE: Loctite, SuperGlue, or similar products on the hardware or the flares.**
- B) Fit:** Verify the fit of the flares to vehicle. (Some filing, sanding, or cutting may be necessary to ensure proper fit).
- C) Painting:** (Optional) if paint is desired it must be done prior to installing flares on vehicle. Clean outer surface with a good grade degreaser. DO NOT USE LACQUER THINNER OR ENAMEL REDUCER AS A DEGREASER. Wipe outer surface thoroughly with a tack rag prior to paint. Application of plastic adhesion promoter for ABS plastic as per your paint system manufacturer's recommendations is required. Paint flares using a high quality enamel, or polyurethane automotive paint. If painting edge trim (not recommended), use a flex additive.
- D) Performance:** Using larger Tires may increase the area required to turn the vehicle. Some Tire/Rim combinations may require lowering bump stops and or installing steering stops to prevent tire from contacting flare.
- E) Exhaust System:** Modifications may be necessary to maintain a minimum 4" clearance between flares and exhaust pipes. (Exhaust gases should not vent directly onto flares)
- F) Metal Protection:** All exposed fasteners and bare metal should be treated with rust resistant paint BEFORE installing flares. Spray inner fender wells with undercoating AFTER flare attachments have been completed.
- G) Decals:** Flares may interfere with existing decals on vehicle. If you wish, remove decals prior to installation of flares.
- H) Care & Cleaning:** Bushwacker fender flares are built to last; any detergent you use to wash your vehicle is sufficient to clean the flare. Do not use any harsh abrasive detergents.

RAM Extend-A-Fender® Fender Flares Front Pair

Front Part #50045-02

Rev-5 3/3/2016

For complete fitment info visit : www.bushwacker.com

TOOLS FOR EASY INSTALLATION:

- Utility Knife
- Drill
- 1/8" Drill Bit
- #2 Phillips Driver
- Socket Wrench
- 8 mm Socket
- 3/8" Wrench
- Awl or Similar Pointed Tool
- Grease Pencil

PLEASE READ: Dirt and debris can become lodged between the fender flares and the vehicle's fenders, causing scratching and paint wear from vibration. Lund International is not responsible for any damage, and the installation of our fender flares is done with the buyer's understanding that this scratching and paint wear may occur.

LIMITED LIFETIME WARRANTY AGAINST ANY MANUFACTURING DEFECTS

- To claim a warranty, you must provide Proof of Purchase.

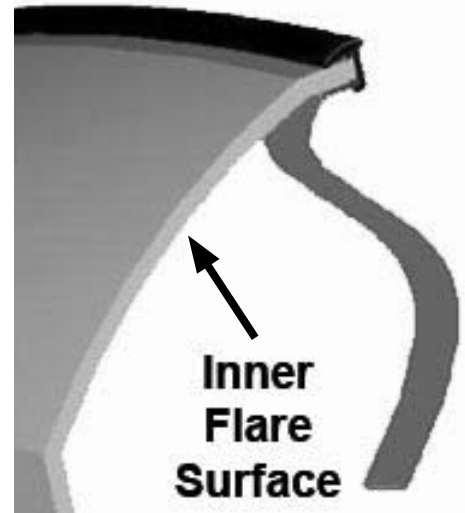
Included in Hardware Kit:

- | | | | | | | | | | |
|----|---|----|---|----|---|----|---|----|--|
| 1. |  | 2. |  | 3. |  | 4. |  | 5. |  |
| | CL1-0022,
#10 "U" Clip, | | ET1-0002,
Edge Trim Tool, | | GP1-0005,
Large Wiper Style
Edge Trim,
145 inches | | MT1-0014,
1" x1.5" x.01"
Black Mylar Tab, | | SW1-0056,
#8 x 3/4"
PH Screw, |
| | 2 pcs | | 1 pc | | | | 2 pcs | | 2 pcs |

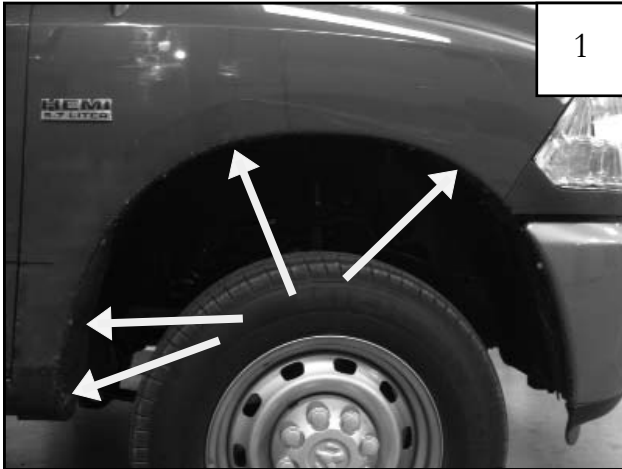
STEP 2 - EDGE TRIM INSTALLATION

A. Peel two to three inches of red vinyl backing away from Edge Trim (GP1-0005) tape. Applying the adhesive side of the edge trim to the inner side of the flare, affix the edge trim to the top edge of the flare (the portion that comes in contact with the vehicle).

B. Press edge trim into place along the top edge of the flare in one-foot increments, pulling red vinyl backing free as you continue to work your way around the top edge of the flare.



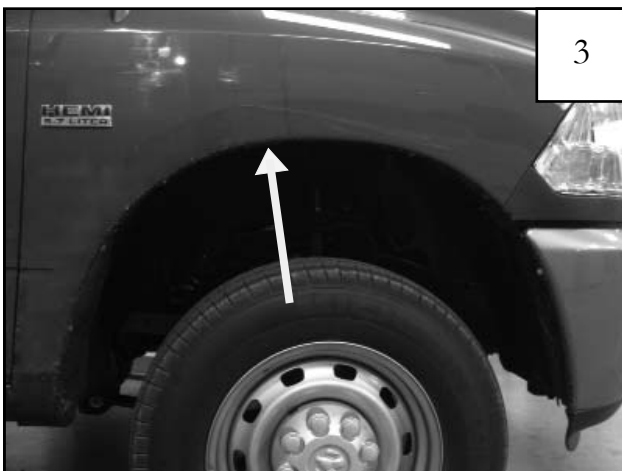
Front Flare Installation Procedures (Passenger's Side):



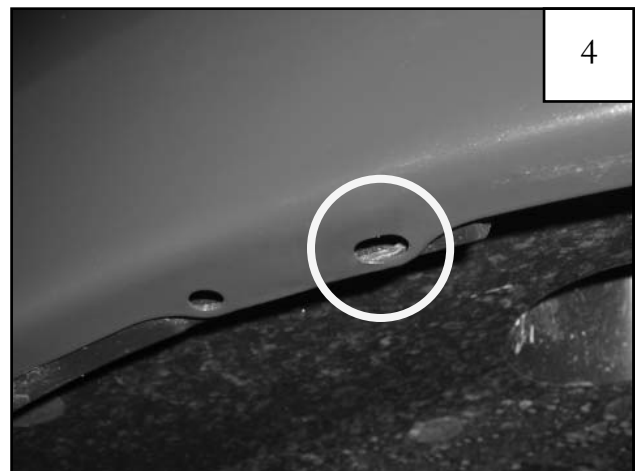
Remove four factory installed screws with 8 mm socket wrench. Save screws for reinstallation.



2011 Models Only: Remove inner piece at bottom rear of wheel well..



Install 1"x1.5" Black Tab and #10 U-Clip at this location. See step 4, 5, 6, & 7.

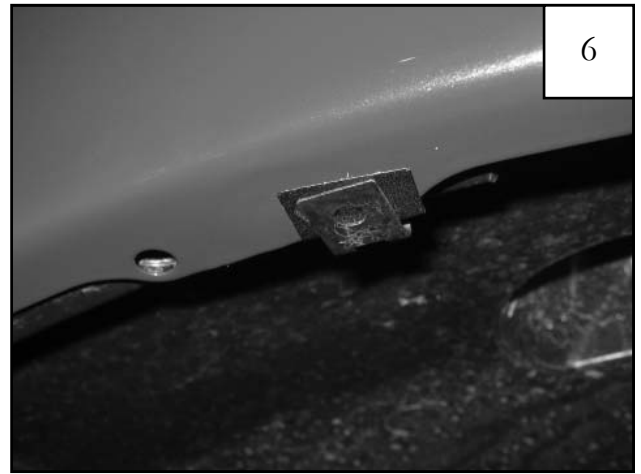


At location in step 3, there is a lip with two factory holes. One hole is a circle and one is an oval. The 1"x1.5" Black Tab and #10 U-Clip will be installed over the oval. The oval is the hole more toward the front of the vehicle.



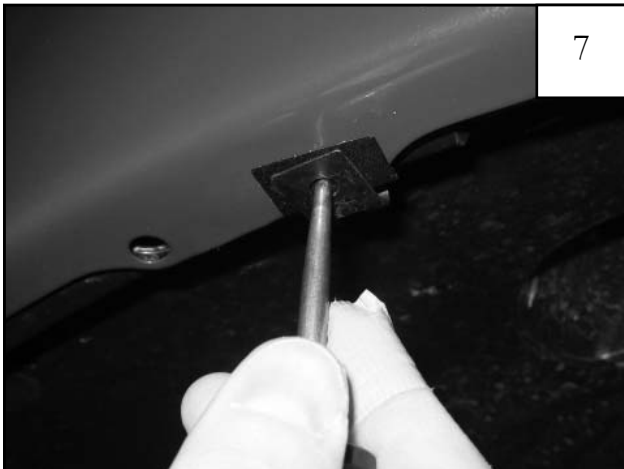
5

Install 1"x1.5" Black Tab over existing factory hole. There are two holes at the top center location. Refer to step 4 for proper hole for installation.



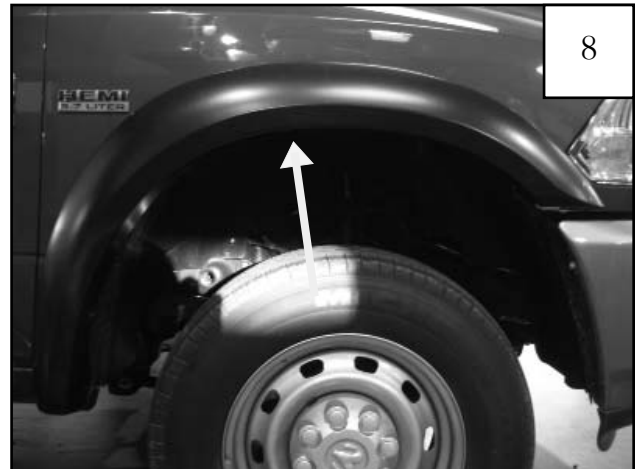
6

Install #10 U-Clip over 1"x1.5" Black Tab.



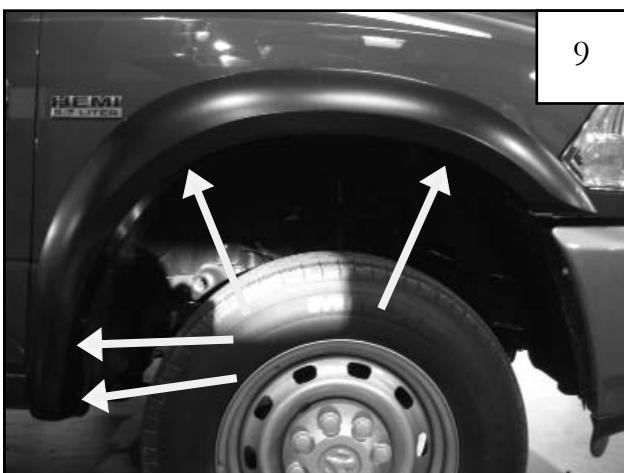
7

Using an awl or similar pointed tool, poke a hole through 1"x1.5" Black Tab using the #10 U-Clip hole as a guide.



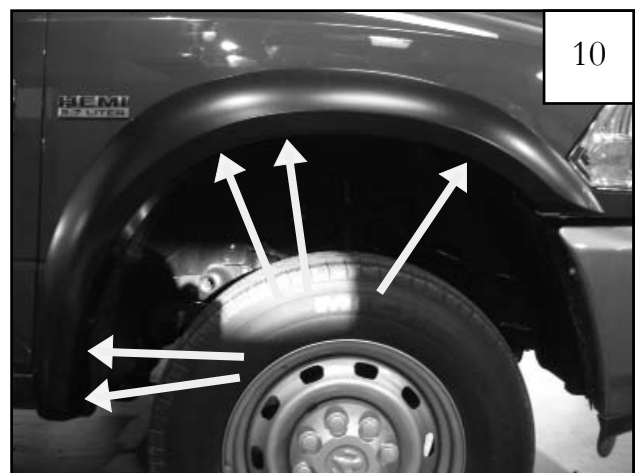
8

Hold flare to vehicle and start the kit supplied #8x3/4" Washer Panhead Screws with a Phillips screwdriver. *Do not tighten.*



9

Hold flare to the vehicle and start the factory screws with an 8 mm socket wrench through the factory holes. *Do not tighten.*



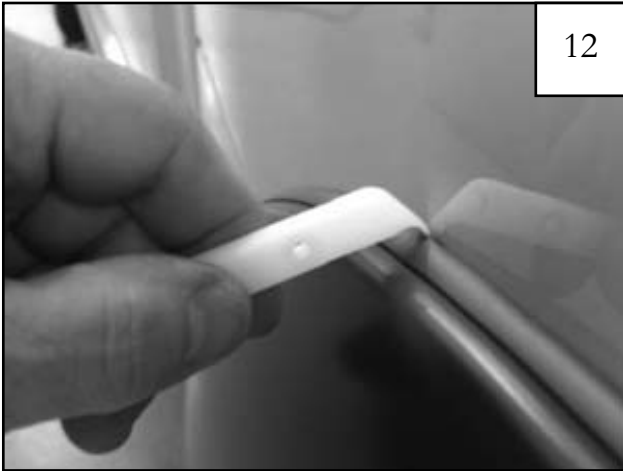
10

Press firmly on flare and tighten all screws.



Completed front flare installation.

Edge Trim Tool Procedures:



Using supplied Edge Trim Tool (ET1-0002), seat edge trim against vehicle by hooking curved end under edge trim at one end of flare. Next, slide around outer edge of flare to the other end.



Using flat end of supplied Edge Trim Tool (ET1-0002), seat edge trim against flare by inserting straight end between edge trim and flare at one end. Next, slide around entire edge to the other end.